



TASMANIAN ENERGY SECURITY

Monitor and Assessor

Monthly Dashboard



September 2020 edition

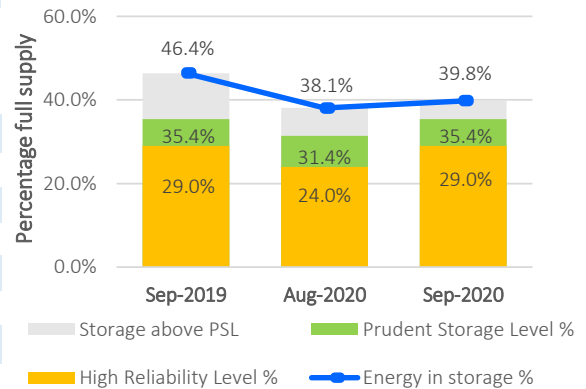
Report on energy in storage levels and energy security assessment for mainland Tasmania as at 7 September 2020

Status

Energy in storage remains above the Prudent Storage Level.
 Energy in storage is equivalent to 6.5 months average seasonal demand[^].
 Risk response: Normal - commercial operation of Hydro Tasmania generation.
 Hydro Tasmania reports that storages remain above the High Reliability Level over the next 90 days in all its simulated inflow sequences.

Energy security assessment:
 no additional monitoring activities required

Energy in storage - status



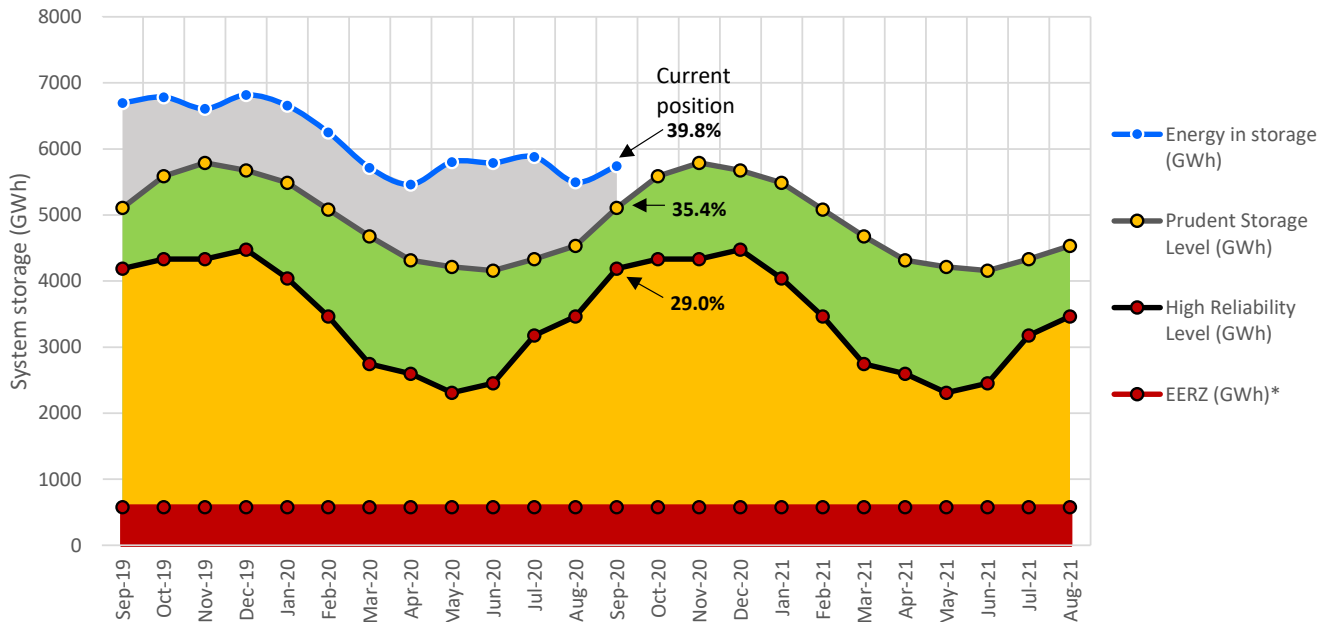
Energy in storage (EIS)

	System	PSL	HRL
As at 7 September 2020 (GWh)	5743	5111	4187
Percentage full supply	39.8%	35.4%	29.0%
Total August inflows~ (GWh)	828		

As at 3 August 2020 (GWh)	5497
Change from last month (GWh)	4.5%
Compared to September last year	-14.2%

System (14437 GWh) - excludes Lake Gairdner, Lake Margaret & Lake Plimsoll

Energy in storage (mainland Tasmania) - September 2019 to September 2020



[^]Average seasonal demand for the energy in storage equivalent is approximately 885 GWh per month.

~Inflows for the calendar month.

*System storage associated with Great Lake Environmental Extreme Risk Zone (EERZ).

HRL = High Reliability Level (threshold to which reserve water is held for energy security purposes, where the reserve is sufficient to withstand a six month Basslink outage coinciding with a very low inflow sequence, and avoid extreme environmental risk for Great Lake).

PSL = Prudent Storage Level (additional storage to result in a low likelihood of entering the HRL under normal operating conditions).

EIS = Energy in storage (the volume of water available for electricity generation in Hydro Tasmania's dams as a % of full supply).

August statistics

Mainland Tasmanian generation during August 2020

Tasmanian monthly consumption 966.5 GWh

Renewable generation

Hydro generation 705.0 GWh

Wind generation 122.5 GWh

Gas

Gas generation 24.7 GWh

Basslink flows during August 2020

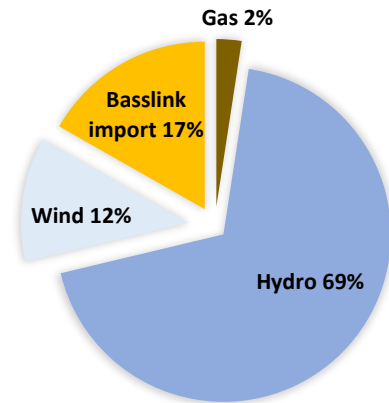
Basslink interconnector Operational

Basslink imports 171.7 GWh

Basslink exports 55.9 GWh

Basslink net imports 115.8 GWh

Mainland Tasmanian generation mix



Energy security outlook

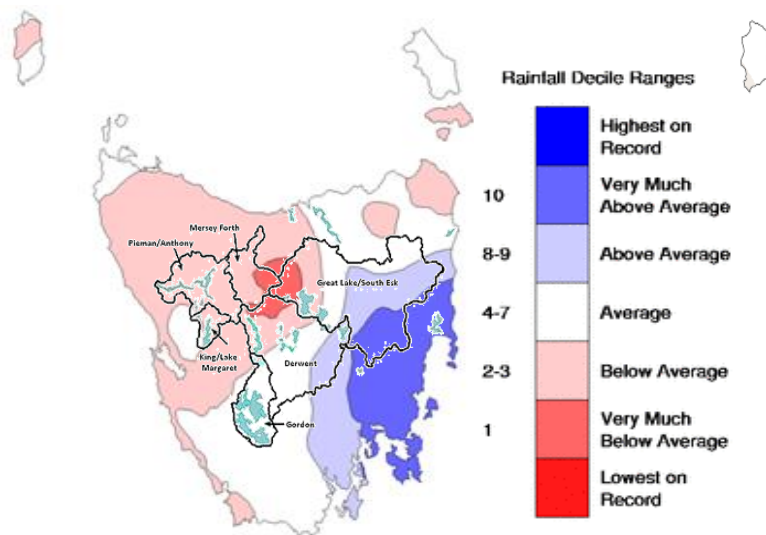
Rainfall in Tasmania - August

Tasmania's August rainfall was around 15% below average and it was the driest August since 2014. Rainfall totals were mixed, with parts of the Southeast district in the wettest 10% of records, while parts of the Central Highlands were in the driest 10%. A slow-moving high-pressure system near Tasmania limited rain from August 7 to August 12.

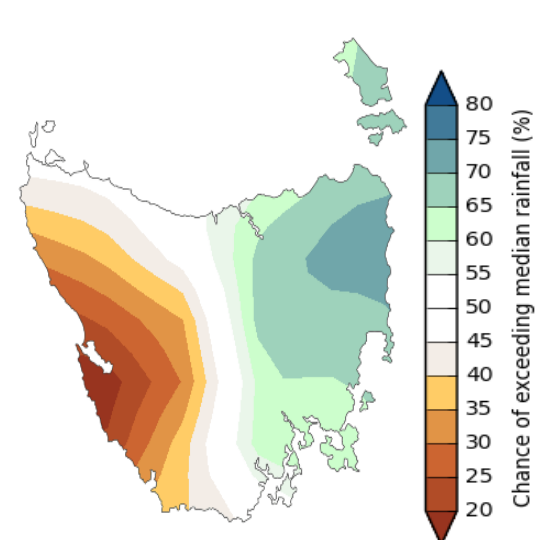
Three month forecast

The Bureau of Meteorology's three month climate outlook for September 2020 to November 2020, issued on 3 September 2020, estimates it is likely that rainfall will be above the median level in north-east Tasmania. The Bureau estimates that, for western Tasmania, rainfall is likely to be below the median.

Monthly Rainfall Deciles for Tasmania 01/08/2020 - 31/08/2020



Likelihood of Exceeding the Median Rainfall September to November 2020



Source: Bureau of Meteorology, Monthly Climate Summary for Tasmania (link).

Source: Bureau of Meteorology, Monthly Climate Outlook (link).

Disclaimer: This report has been prepared in good faith using information sourced from NEM Review™ and the Australian Bureau of Meteorology, with additional data provided by Hydro Tasmania. The Office of the Tasmanian Economic Regulator assumes no liability as to the reliability and accuracy of the information provided.