



TASMANIAN ENERGY SECURITY Monitor and Assessor



Monthly Dashboard

October 2021 edition

Report on energy in storage levels and energy security assessment for mainland Tasmania as at 4 October 2021.

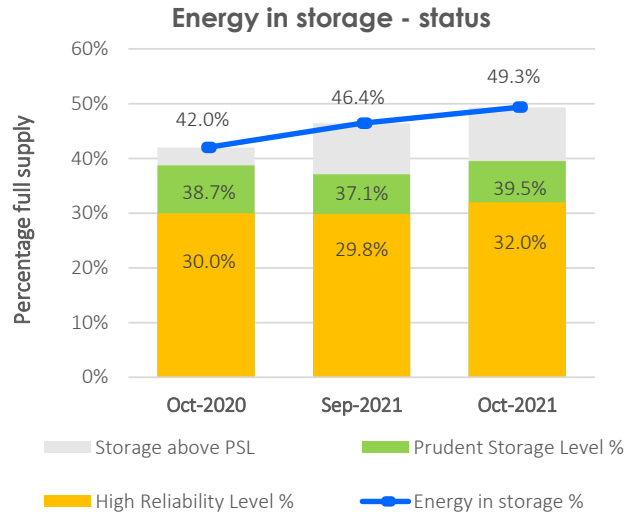
Status

Energy in storage remains well above the Prudent Storage Level.
 Energy in storage is equivalent to 8.3 months average seasonal demand.[^]
 Risk response: Normal - commercial operation of Hydro Tasmania generation.
 Hydro Tasmania reports that storages remain above the High Reliability Level over the next 90 days in all its simulated inflow sequences.

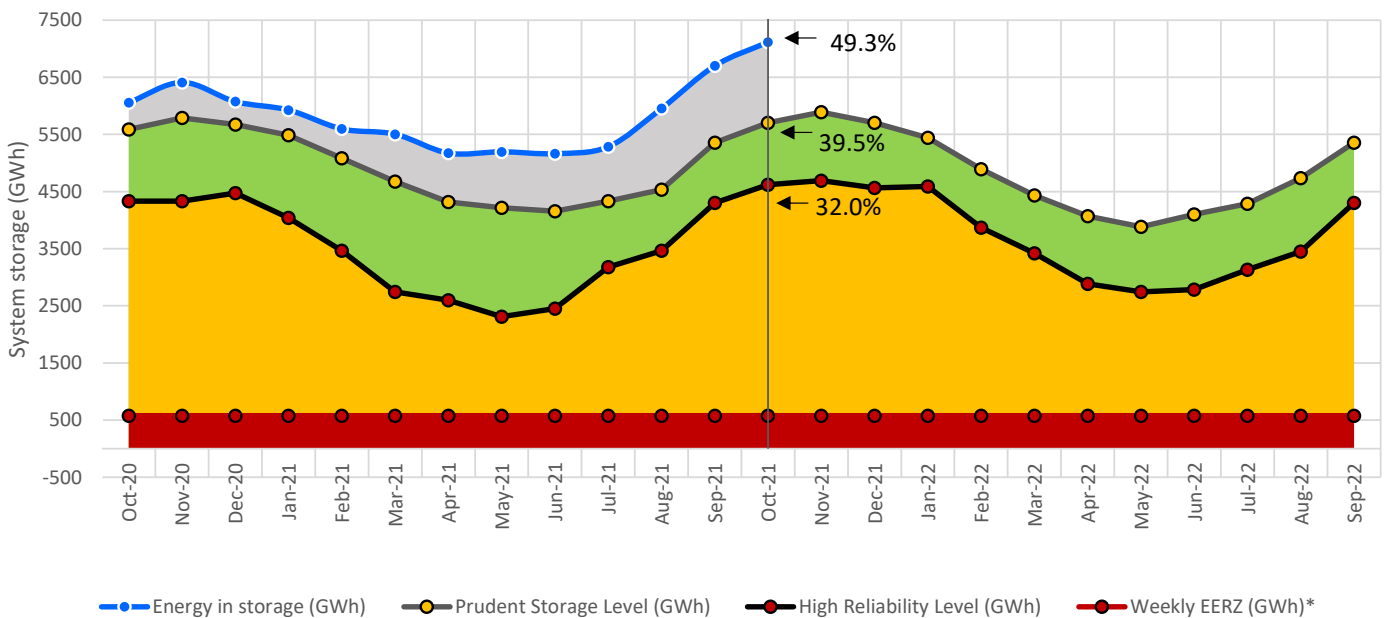
Energy security assessment:
 no additional monitoring activities required

Energy in storage (EIS)

	System	PSL	HRL
As at 4 October 2021 (GWh)	7 117	5 703	4 620
Percentage full supply #	49.3%	39.5%	32.0%
Total September inflows~ (GWh)	1 450		
Previous month (as at 6 September 2021) (GWh)	6 700		
Change from last month (GWh)	+6.2%		
Change from October last year (GWh)	+17%		



Energy in storage (mainland Tasmania) - September 2020 to September 2021**



[^] Average seasonal demand for the energy in storage equivalent is approximately 861 GWh per month.

[#] Total system supply is 14 437 GWh (excludes Lake Gairdner, Lake Margaret and Lake Plimsoll).

[~] Inflows for the calendar month.

* System storage associated with Great Lake Environmental Extreme Risk Zone (EERZ).

** The HRL and PSL profiles were revised in August 2021, taking effect from 1 September 2021. This chart shows the revised profiles starting from July 2021.

Further information can be found at the Office of the Tasmanian Economic Regulator's website, available [here](#)

HRL = High Reliability Level (threshold to which reserve water is held for energy security purposes, where the reserve is sufficient to withstand a six month Basslink outage coinciding with a very low inflow sequence, and avoid extreme environmental risk for Great Lake).

PSL = Prudent Storage Level (additional storage to result in a low likelihood of entering the HRL under normal operating conditions).

EIS = Energy in storage (the volume of water available for electricity generation in Hydro Tasmania's dams as a percentage of full supply).

September statistics

Mainland Tasmanian generation during September 2021

Tasmanian monthly consumption	962.3 GWh
-------------------------------	-----------

Renewable generation

Hydro generation	945.9 GWh
Wind generation	173.6 GWh

Gas

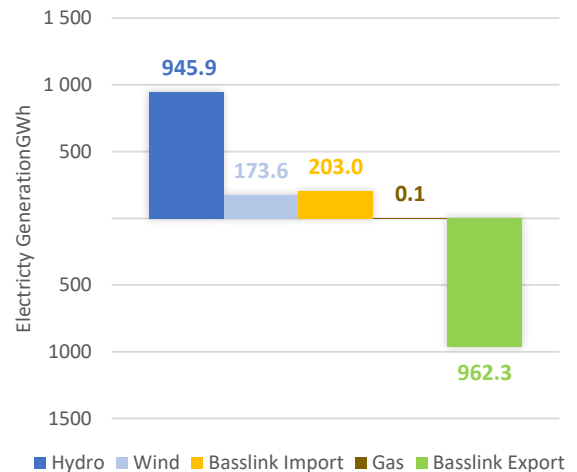
Gas generation	Operational 0.1 GWh
----------------	------------------------

Basslink flows during September 2021

Basslink interconnector

Basslink imports	50.5 GWh
Basslink exports	203.0 GWh
Basslink net exports	152.5 GWh

Mainland Tasmanian generation mix (September 2021)

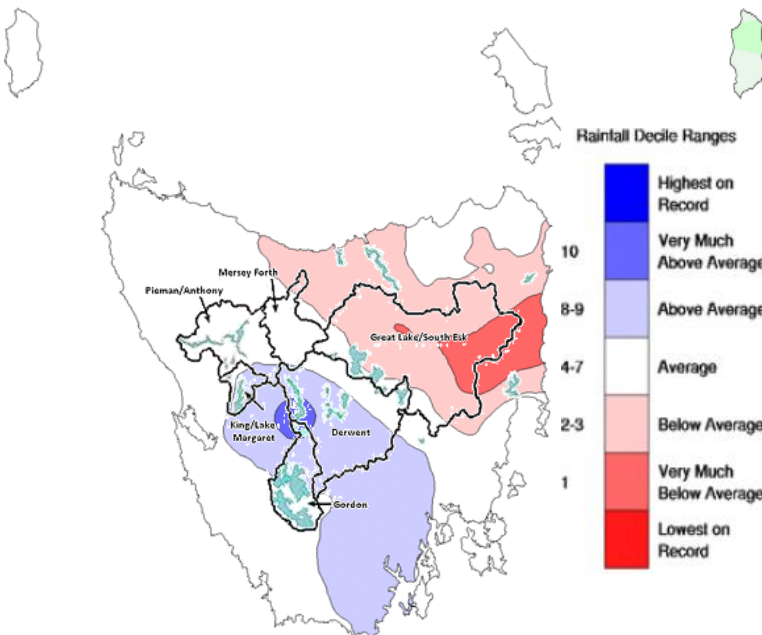


Energy security outlook

Rainfall in Tasmania - September 2021

September rainfall was above average for the Central Plateau, and below average in the north-east. Parts of central and south-eastern Tasmania received above average rainfalls, including at Derwent Bridge and Wayatinah where new daily rainfall records were set, but most of north-eastern and eastern Tasmania received lower than average rainfalls. Overall, most of the State had near average September totals. September 2021 rainfall was the highest since September 2017. The mean minimum temperature for Tasmania as a whole was 0.13 °C warmer than average, with some sites recording their highest September temperature on record.

Monthly Rainfall Deciles for Tasmania 01/09/2021 - 30/09/2021

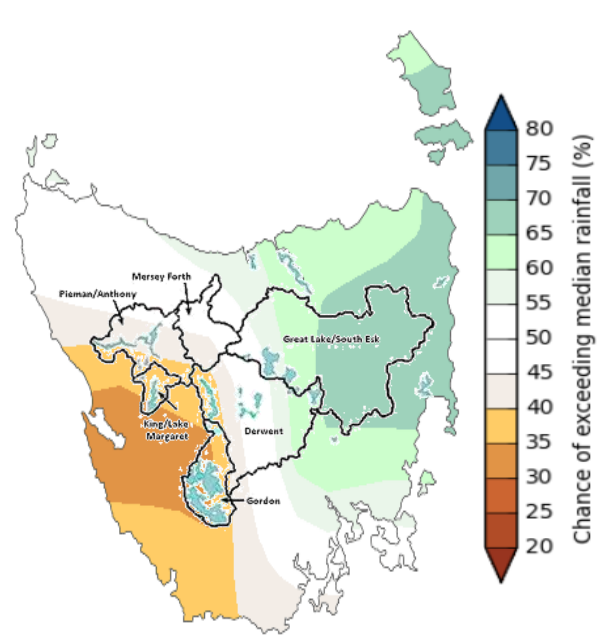


Source: Bureau of Meteorology, Monthly Climate Summary for Tasmania (link).

Three month forecast

The Bureau of Meteorology's three month climate outlook for October 2021 to December 2021, issued on 30 September 2021, estimates it is more likely than not that rainfall will be below the median level in western Tasmania (chance of exceeding the median is less than 40 per cent). Rainfall in south-west Tasmania is likely to be below the median level. Other parts of Tasmania are likely to receive rainfall above median for November to January.

Likelihood of Exceeding the Median Rainfall October to December 2021



Source: Bureau of Meteorology, Monthly Climate Outlook (link).

Disclaimer: This report has been prepared in good faith using information sourced from NEM Review™ and the Australian Bureau of Meteorology, with additional data provided by Hydro Tasmania. The Office of the Tasmanian Economic Regulator assumes no liability as to the reliability and accuracy of the information provided.