



TASMANIAN ENERGY SECURITY

Monitor and Assessor

Monthly Dashboard



November 2020 edition

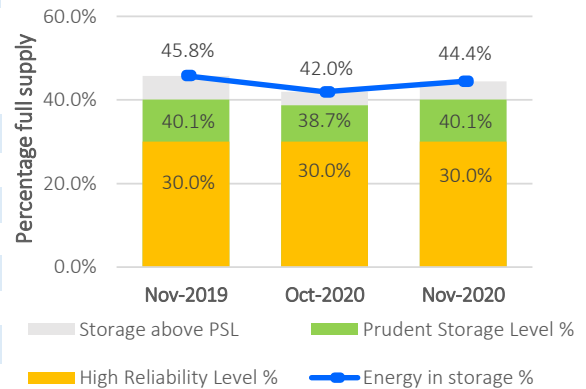
Report on energy in storage levels and energy security assessment for mainland Tasmania as at 2 November 2020

Status

Energy in storage remains above the Prudent Storage Level.
 Energy in storage is equivalent to 7.5 months average seasonal demand.[^]
 Risk response: Normal - commercial operation of Hydro Tasmania generation.
 Hydro Tasmania reports that storages remain above the High Reliability Level over the next 90 days in all its simulated inflow sequences.

Energy security assessment:
 no additional monitoring activities required

Energy in storage - status



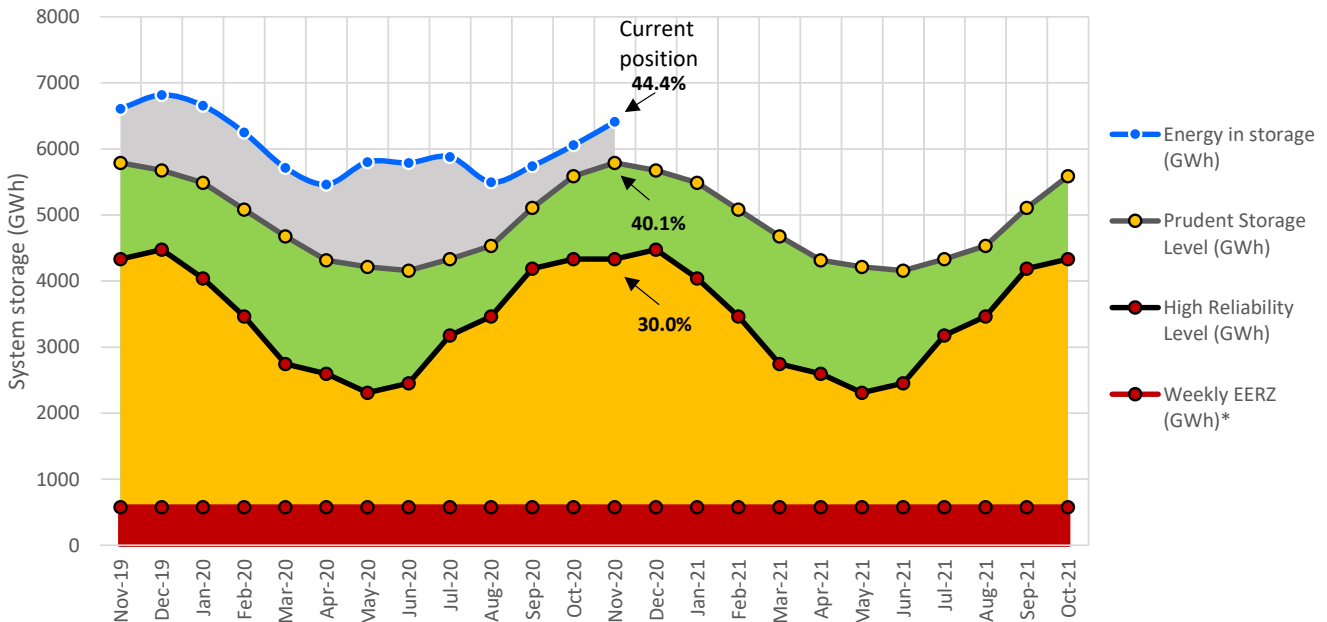
Energy in storage (EIS)

	System	PSL	HRL
As at 2 November 2020 (GWh)	6411	5789	4331
Percentage full supply	44.4%	40.1%	30.0%
Total October inflows~ (GWh)	1251		

As at 5 October 2020 (GWh)	6057
Change from last month (GWh)	5.8%
Compared to November last year	-3.0%

System (14437 GWh) - excludes Lake Gairdner, Lake Margaret & Lake Plimsoll

Energy in storage (mainland Tasmania) - November 2019 to November 2020



[^]Average seasonal demand for the energy in storage equivalent is approximately 859 GWh per month.

~Inflows for the calendar month.

*System storage associated with Great Lake Environmental Extreme Risk Zone (EERZ).

HRL = High Reliability Level (threshold to which reserve water is held for energy security purposes, where the reserve is sufficient to withstand a six month Basslink outage coinciding with a very low inflow sequence, and avoid extreme environmental risk for Great Lake).

PSL = Prudent Storage Level (additional storage to result in a low likelihood of entering the HRL under normal operating conditions).

EIS = Energy in storage (the volume of water available for electricity generation in Hydro Tasmania's dams as a % of full supply).

October statistics

Mainland Tasmanian generation during October 2020

Tasmanian monthly consumption 898.8 GWh

Renewable generation

Hydro generation 751.6 GWh

Wind generation 131.4 GWh

Gas

Operational
Gas generation 3.8 GWh

Basslink flows during October 2020

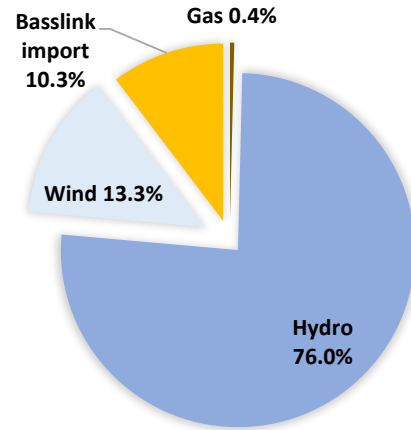
Basslink interconnector Operational

Basslink imports 101.9 GWh

Basslink exports 87.3 GWh

Basslink net imports 14.6 GWh

Mainland Tasmanian generation mix



Energy security outlook

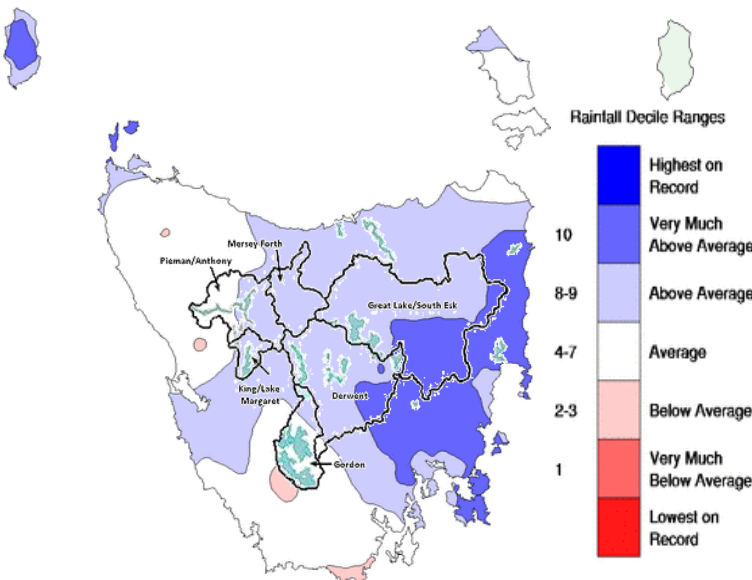
Rainfall in Tasmania - October

October rainfall was 23% higher than average for Tasmania, making it the State's wettest October since 2016. A wet start to the month saw more than 100 mm recorded over parts of the west during the first week of October. Eastern Tasmania recorded most of its above-average October rainfall over three events during the first three weeks of the month.

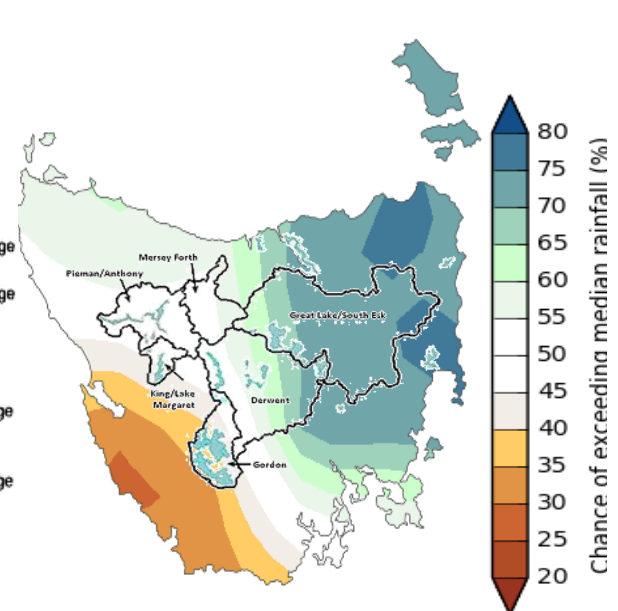
Three month forecast

The Bureau of Meteorology's three month climate outlook for October 2020 to December 2020, issued on 1 October 2020, estimates it is likely that rainfall will be above the median level in North-east Tasmania, and above or around the median level for North-west Tasmania.

Monthly Rainfall Deciles for Tasmania 01/10/2020 - 31/10/2020



Likelihood of Exceeding the Median Rainfall November to January 2020



Source: Bureau of Meteorology, Monthly Climate Summary for Tasmania (link).

Source: Bureau of Meteorology, Monthly Climate Outlook (link).

Disclaimer: This report has been prepared in good faith using information sourced from NEM Review™ and the Australian Bureau of Meteorology, with additional data provided by Hydro Tasmania. The Office of the Tasmanian Economic Regulator assumes no liability as to the reliability and accuracy of the information provided.