

# TASMANIAN ENERGY SECURITY Monitor and Assessor



## Monthly Dashboard

March 2022 edition

Report on energy in storage levels and energy security assessment for mainland Tasmania as at 7 March 2022.

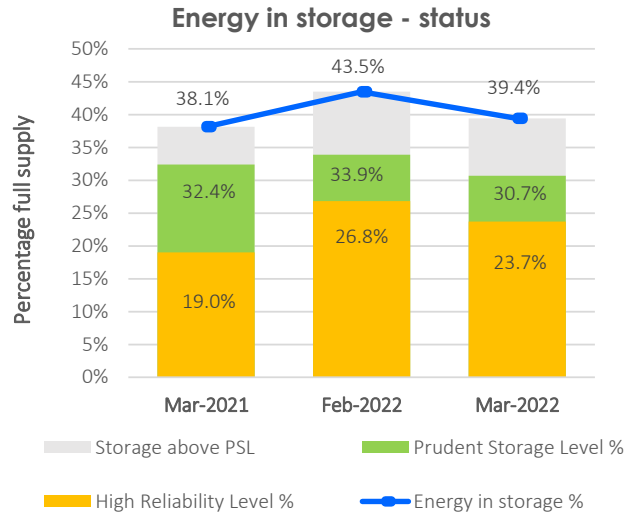
### Status

Energy in storage remains well above the Prudent Storage Level.  
Energy in storage is equivalent to 6 months average seasonal demand.<sup>^</sup>  
Risk response: Normal - commercial operation of Hydro Tasmania generation.  
Hydro Tasmania reports that storages remain above the High Reliability Level over the next 120 days in all its simulated inflow sequences.

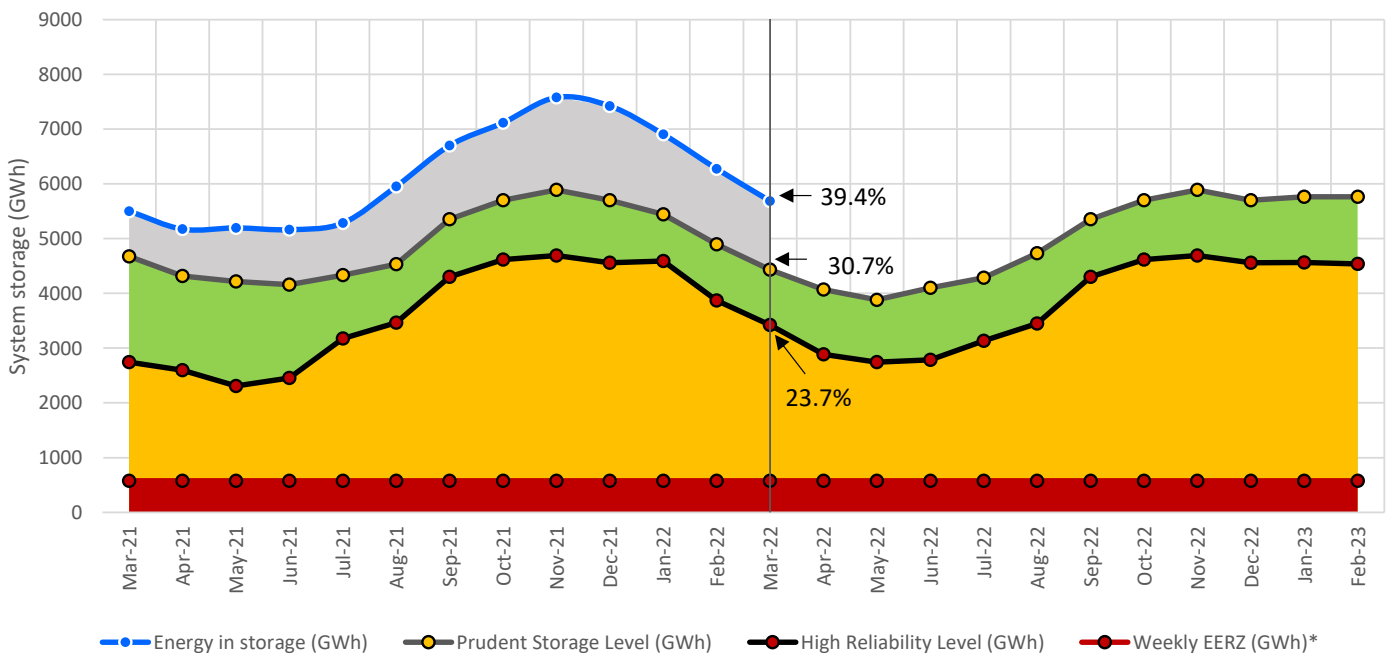
Energy security assessment:  
no additional monitoring activities required

### Energy in storage (EIS)

	System	PSL	HRL
As at 7 March 2022 (GWh)	5 688	4 432	3 422
Percentage full supply <sup>#</sup>	39.4%	30.7%	23.7%
Total February yield <sup>~</sup> (GWh)	- 84		
Previous month (as at 7 February 2022) (GWh)	6 275		
Change from last month (GWh)	-9.4%		
Change from March last year (GWh)	+3%		



### Energy in storage (mainland Tasmania) - March 2021 to March 2022\*\*



<sup>^</sup> Average seasonal demand for the energy in storage equivalent is approximately 948 GWh per month.

<sup>#</sup> Total system supply is 14 437 GWh (excludes Lake Gairdner, Lake Margaret and Lake Plimsoll).

<sup>~</sup> Inflows for the calendar month.

\* System storage associated with Great Lake Environmental Extreme Risk Zone (EERZ).

\*\* The HRL and PSL profiles were revised in August 2021, taking effect from 1 September 2021. This chart shows the revised profiles starting from September 2021.

Further information can be found at the Office of the Tasmanian Economic Regulator's website, available [here](#)

HRL = High Reliability Level (threshold to which reserve water is held for energy security purposes, where the reserve is sufficient to withstand a six month Basslink outage coinciding with a very low inflow sequence, and avoid extreme environmental risk for Great Lake).

PSL = Prudent Storage Level (additional storage to result in a low likelihood of entering the HRL under normal operating conditions).

EIS = Energy in storage (the volume of water available for electricity generation in Hydro Tasmania's dams as a percentage of full supply).

## February statistics

### Mainland Tasmanian generation during February 2022

Tasmanian monthly consumption	800.5 GWh
-------------------------------	-----------

### Renewable generation

Hydro generation	526.2 GWh
Wind generation	122.6 GWh

### Gas

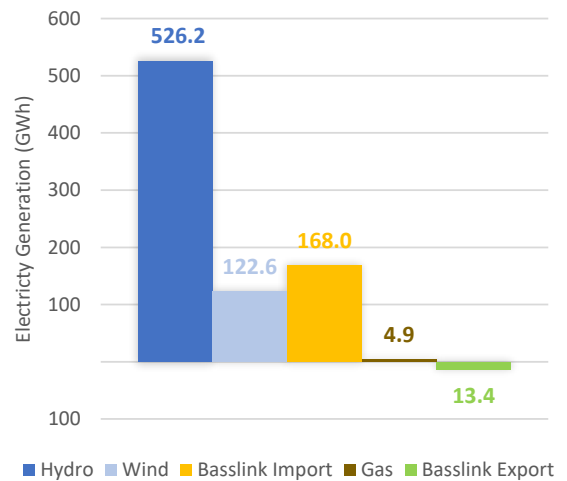
Gas generation	4.9 GWh
----------------	---------

### Basslink flows during February 2022

#### Basslink interconnector

Basslink imports	168.0 GWh
Basslink exports	13.4 GWh
Basslink net imports	154.6 GWh

### Mainland Tasmanian generation mix (February 2022)



## Energy security outlook

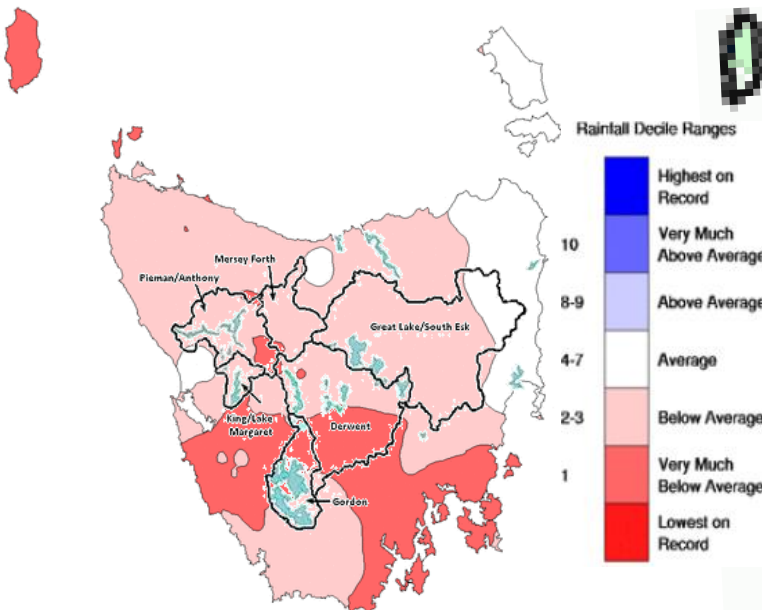
### Rainfall in Tasmania - February 2022

February 2022 recorded around half its typical rainfall for Tasmania. Parts of the north-east received near average rainfall, but elsewhere in Tasmania totals were below average, and in the driest 10% of February records for parts of the south. February days were warmer than average for most of the State. The mean maximum temperature for Tasmania as a whole was 0.71°C warmer than average. The mean minimum for Tasmania overall was 0.43°C above average.

### Three month forecast

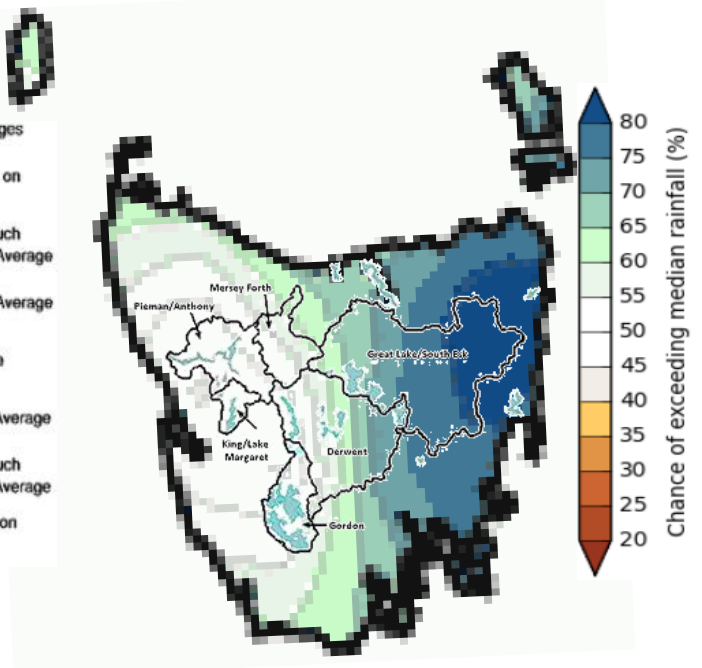
The Bureau of Meteorology's three month climate outlook for March 2022 to May 2022, issued on 3 March 2022, estimates it is likely that rainfall will be above the median for eastern Tasmania and that there is roughly equal chances of above or below median rainfall in the rest of Tasmania. As such, Hydro's major storages, Gordon, King/Lake Margaret, and Pieman/Anthony, could therefore receive above or below average inflows.

### Monthly Rainfall Deciles for Tasmania 1 February 2022 - 28 February 2022



Source: Bureau of Meteorology, Monthly Climate Summary for Tasmania (link).

### Likelihood of Exceeding the Median Rainfall March 2022 to May 2022



Source: Bureau of Meteorology, Monthly Climate Outlook (link).

\*OTTER apologises for the pixelated image, caused by changes to the way BoM Climate Outlook maps are archived.

*Disclaimer: This report has been prepared in good faith using information sourced from NEM Review™ and the Australian Bureau of Meteorology, with additional data provided by Hydro Tasmania. The Office of the Tasmanian Economic Regulator assumes no liability as to the reliability and accuracy of the information provided.*