



TASMANIAN ENERGY SECURITY Monitor and Assessor



Monthly Dashboard

March 2021 edition

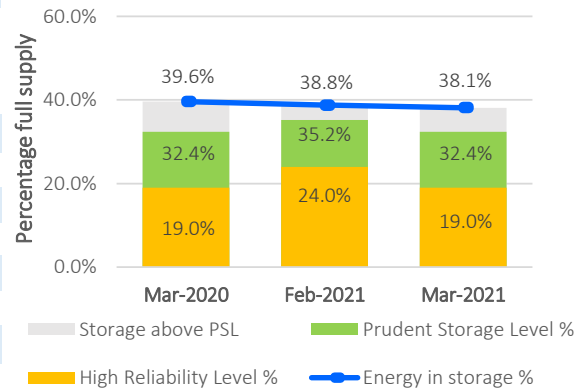
Report on energy in storage levels and energy security assessment for mainland Tasmania as at 1 March 2021

Status

Energy in storage remains above the Prudent Storage Level.
 Energy in storage is equivalent to 5.8 months average seasonal demand.[^]
 Risk response: Normal - commercial operation of Hydro Tasmania generation.
 Hydro Tasmania reports that storages remain above the High Reliability Level over the next 120 days in all its simulated inflow sequences.

Energy security assessment:
 no additional monitoring activities required

Energy in storage - status



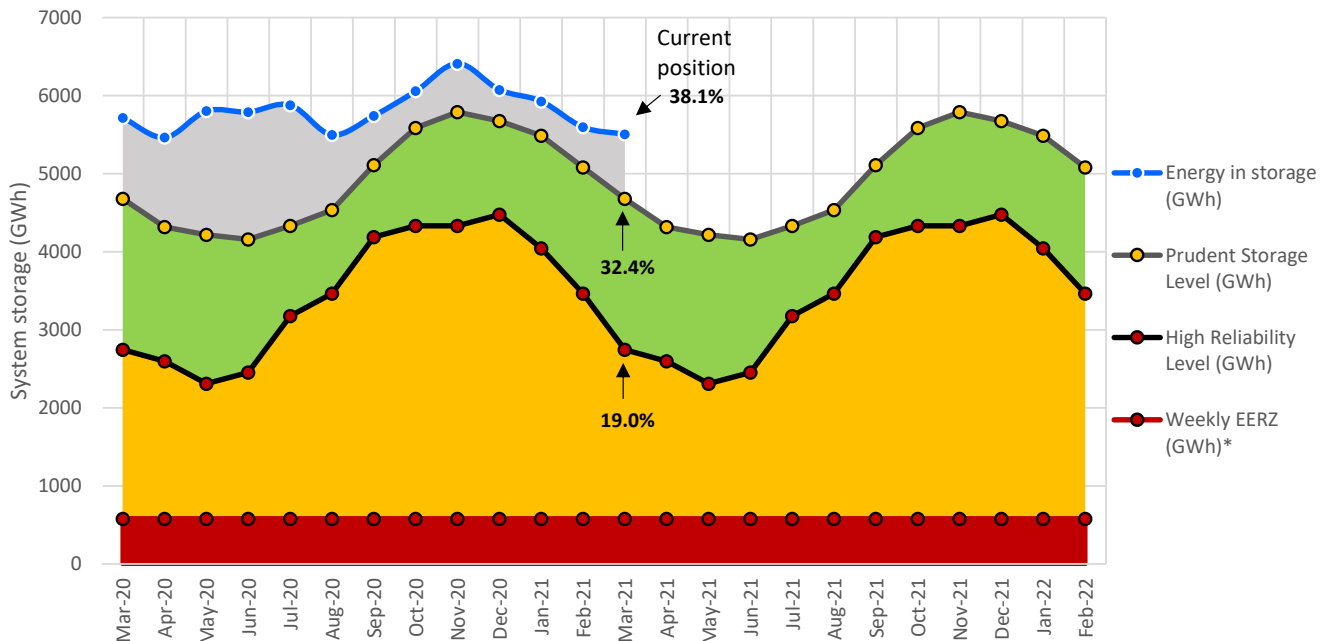
Energy in storage (EIS)

	System	PSL	HRL
As at 1 March 2021 (GWh)	5504	4678	2743
Percentage full supply	38.1%	32.4%	19.0%
Total February inflows~ (GWh)	378		

As at 1 February 2021 (GWh)	5597
Change from last month (GWh)	-1.7%
Compared to March last year (GWh)	-3.7%

System (14437 GWh) - excludes Lake Gairdner, Lake Margaret & Lake Plimsoll

Energy in storage (mainland Tasmania) - March 2020 to March 2021



[^]Average seasonal demand for the energy in storage equivalent is approximately 943 GWh per month.

~Inflows for the calendar month.

*System storage associated with Great Lake Environmental Extreme Risk Zone (EERZ).

HRL = High Reliability Level (threshold to which reserve water is held for energy security purposes, where the reserve is sufficient to withstand a six month Basslink outage coinciding with a very low inflow sequence, and avoid extreme environmental risk for Great Lake).

PSL = Prudent Storage Level (additional storage to result in a low likelihood of entering the HRL under normal operating conditions).

EIS = Energy in storage (the volume of water available for electricity generation in Hydro Tasmania's dams as a % of full supply).

February statistics

Mainland Tasmanian generation during February 2021

Tasmanian monthly consumption 743.0 GWh

Renewable generation

Hydro generation 474.2 GWh

Wind generation 130.8 GWh

Gas

Operational
Gas generation 0.3 GWh

Basslink flows during February 2021

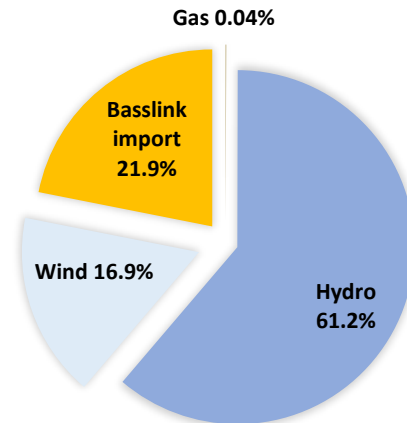
Basslink interconnector Operational

Basslink imports 169.6 GWh

Basslink exports 31.2 GWh

Basslink net imports 138.5 GWh

Mainland Tasmanian generation mix



Energy security outlook

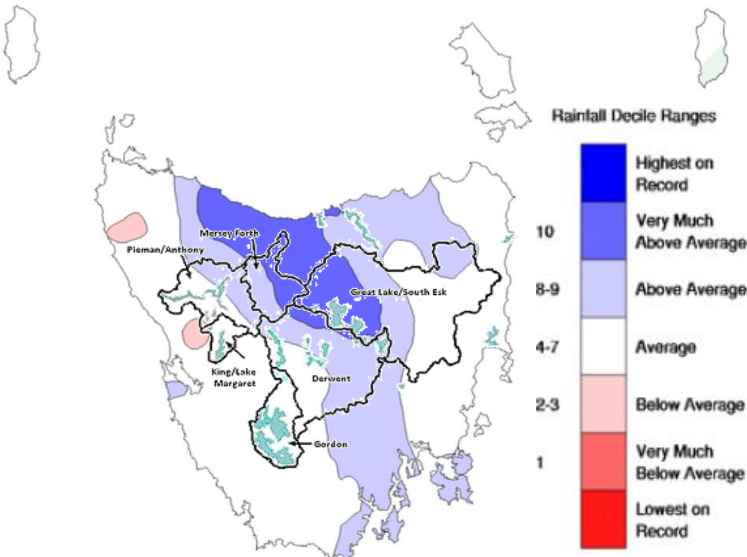
Rainfall in Tasmania - February 2021

February rainfall was above average from the central north coast through to the south-east coast. February rainfall was 45% above average for the state overall, the highest since 2011. Daytime temperatures were close to average across the state, while nights were warmer than average in parts of the north-east and south. Averaged across the state, the mean maximum temperature was 0.38 °C lower than average but still the highest since 2018.

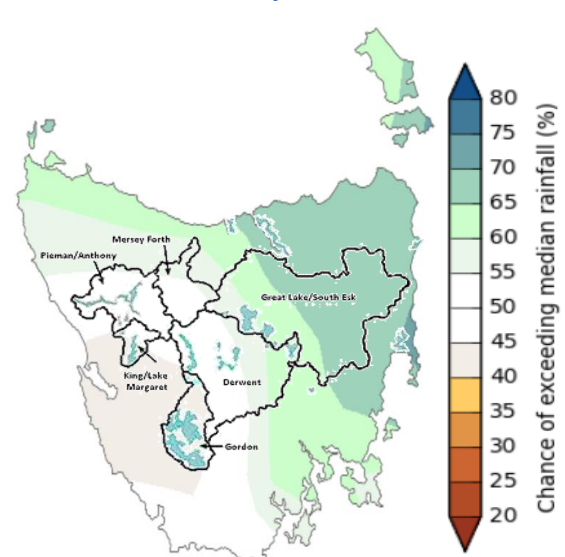
Three month forecast

The Bureau of Meteorology's three month climate outlook for March 2021 to May 2021, issued on 25 February 2021, estimates it is more likely than not that rainfall will be above the median level in North-east, and North-west Tasmania, and less likely than not that rainfall in South-west Tasmania will be below the median level. The catchments with the lowest probability of receiving above the median rainfall are Gordon and King/Lake Margaret, with a probability of approximately 40 per cent each.

Monthly Rainfall Deciles for Tasmania 01/02/2021 - 28/02/2021



Likelihood of Exceeding the Median Rainfall March to May 2021



Source: Bureau of Meteorology, Monthly Climate Summary for Tasmania (link).

Source: Bureau of Meteorology, Monthly Climate Outlook (link).

Disclaimer: This report has been prepared in good faith using information sourced from NEM Review™ and the Australian Bureau of Meteorology, with additional data provided by Hydro Tasmania. The Office of the Tasmanian Economic Regulator assumes no liability as to the reliability and accuracy of the information provided.