



TASMANIAN ENERGY SECURITY Monitor and Assessor



Monthly Dashboard

February 2021 edition

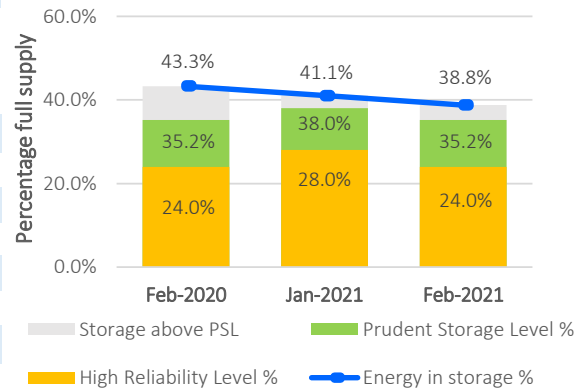
Report on energy in storage levels and energy security assessment for mainland Tasmania as at 1 February 2021

Status

Energy in storage remains above the Prudent Storage Level.
 Energy in storage is equivalent to 6.1 months average seasonal demand.[^]
 Risk response: Normal - commercial operation of Hydro Tasmania generation.
 Hydro Tasmania reports that storages remain above the High Reliability Level over the next 120 days in all its simulated inflow sequences.

Energy security assessment:
 no additional monitoring activities required

Energy in storage - status



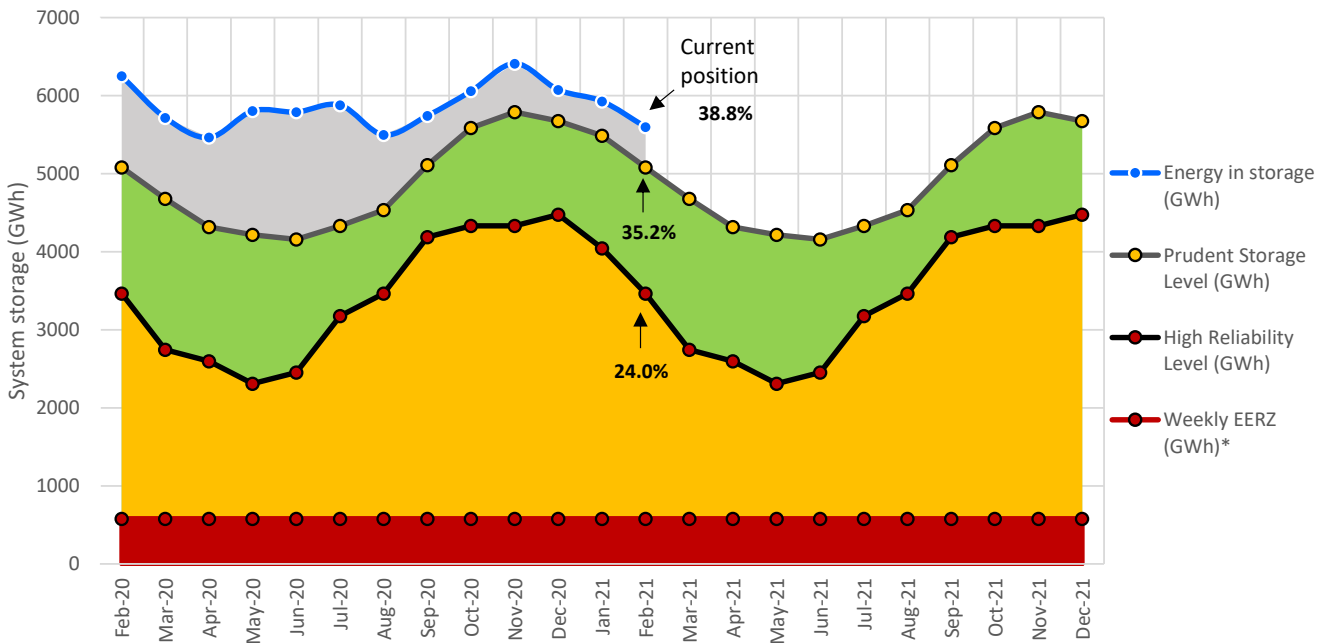
Energy in storage (EIS)

	System	PSL	HRL
As at 1 February 2021 (GWh)	5597	5082	3465
Percentage full supply	38.8%	35.2%	24.0%
Total January inflows~ (GWh)	96		

As at 4 January 2021 (GWh)	5927
Change from last month (GWh)	-5.6%
Compared to February last year	-10.4%

System (14437 GWh) - excludes Lake Gairdner, Lake Margaret & Lake Plimsoll

Energy in storage (mainland Tasmania) - February 2020 to February 2021



[^]Average seasonal demand for the energy in storage equivalent is approximately 917 GWh per month.

~Inflows for the calendar month.

*System storage associated with Great Lake Environmental Extreme Risk Zone (EERZ).

HRL = High Reliability Level (threshold to which reserve water is held for energy security purposes, where the reserve is sufficient to withstand a six month Basslink outage coinciding with a very low inflow sequence, and avoid extreme environmental risk for Great Lake).

PSL = Prudent Storage Level (additional storage to result in a low likelihood of entering the HRL under normal operating conditions).

EIS = Energy in storage (the volume of water available for electricity generation in Hydro Tasmania's dams as a % of full supply).

January statistics

Mainland Tasmanian generation during January 2021

Tasmanian monthly consumption 830.4 GWh

Renewable generation

Hydro generation 453.8 GWh

Wind generation 154.9 GWh

Gas

Gas generation Operational 2.0 GWh

Basslink flows during January 2021

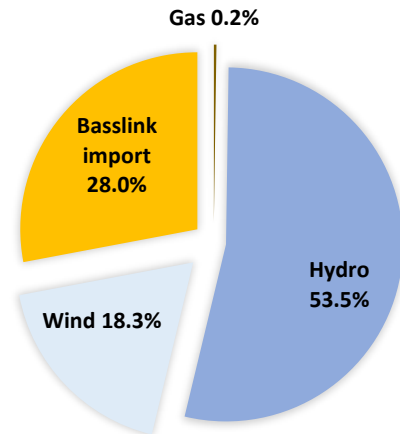
Basslink interconnector Operational

Basslink imports 237.1 GWh

Basslink exports 17.0 GWh

Basslink net imports 220.2 GWh

Mainland Tasmanian generation mix



Energy security outlook

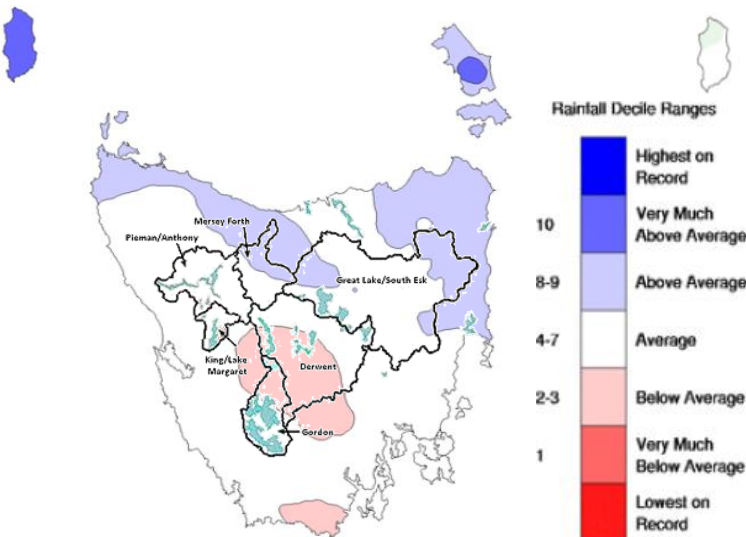
Rainfall in Tasmania - January 2021

Much of Tasmania recorded near average January rainfall, but parts of the north and Bass Strait were wetter than average while parts of the centre and south were drier than average. Persistent rain during the middle of January delivered 7-day totals above 50 mm for parts of the west. Rainfall for the state overall was 2.4% below average for January

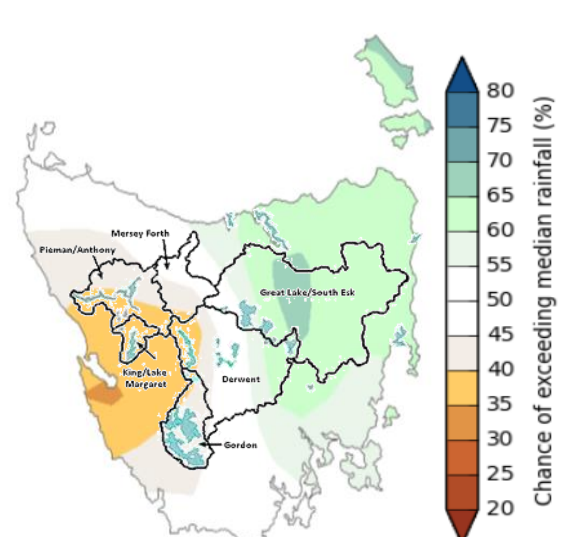
Three month forecast

The Bureau of Meteorology's three month climate outlook for February 2021 to April 2021, issued on 28 January 2021, estimates it is likely that rainfall will be slightly above the median level in North-east Tasmania, around or below the median level in North-west Tasmania, and below the median level for South-west Tasmania. There is an approximately 35 per cent chance of the Pieman/Anthony and King/Lake Margaret catchment areas receiving more than the median rainfall.

Monthly Rainfall Deciles for Tasmania 01/01/2021 - 31/01/2021



Likelihood of Exceeding the Median Rainfall February to April 2021



Source: Bureau of Meteorology, Monthly Climate Summary for Tasmania (link).

Source: Bureau of Meteorology, Monthly Climate Outlook (link).

Disclaimer: This report has been prepared in good faith using information sourced from NEM Review™ and the Australian Bureau of Meteorology, with additional data provided by Hydro Tasmania. The Office of the Tasmanian Economic Regulator assumes no liability as to the reliability and accuracy of the information provided.