

TASMANIAN ENERGY SECURITY Monitor and Assessor



Monthly Dashboard

April 2022 edition

Report on energy in storage levels and energy security assessment for mainland Tasmania as at 4 April 2022.

Status

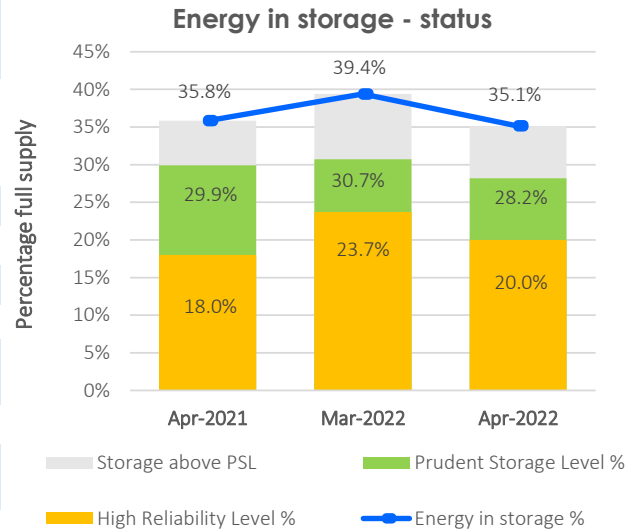
Energy in storage remains well above the Prudent Storage Level.
Energy in storage is equivalent to 5.3 months average seasonal demand.[^]
Risk response: Normal - commercial operation of Hydro Tasmania generation.
Hydro Tasmania reports that storages remain above the High Reliability Level over the next 120 days in all its simulated inflow sequences.



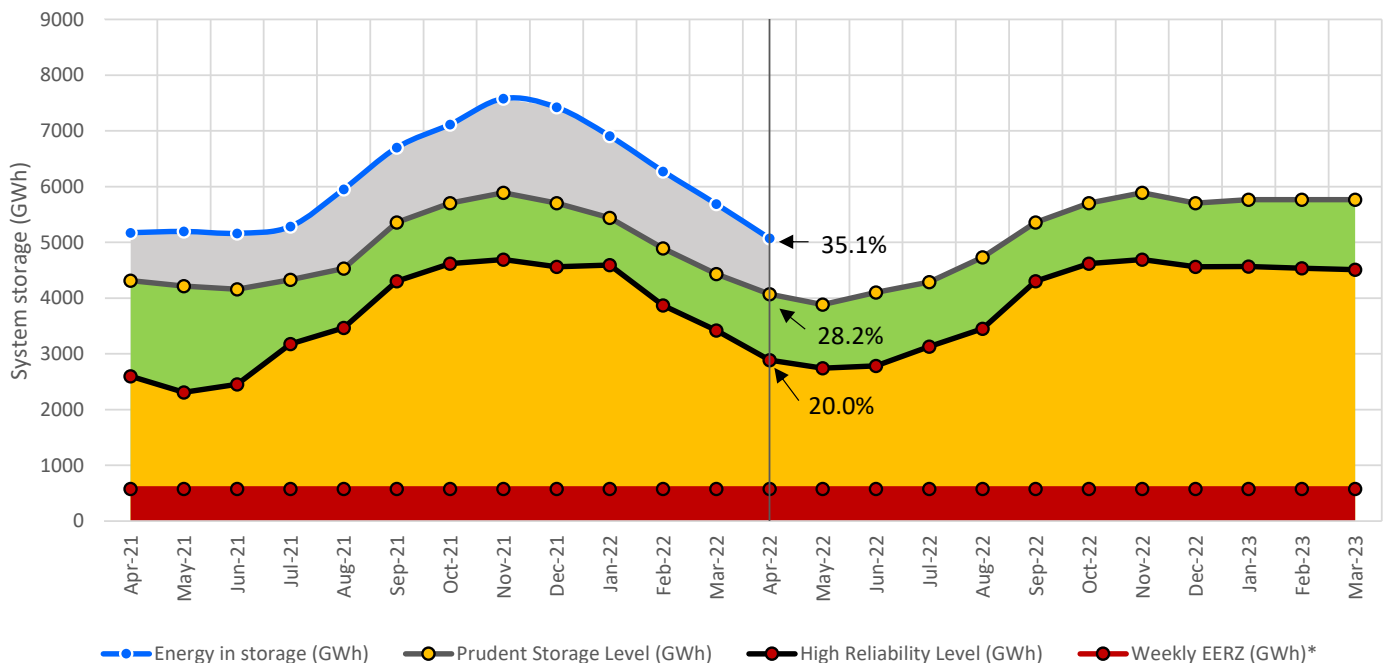
Energy security assessment:
no additional monitoring activities required

Energy in storage (EIS)

	System	PSL	HRL
As at 4 April 2022 (GWh)	5 071	4 071	2 887
Percentage full supply #	35.1%	28.2%	20.0%
Total March yield~ (GWh)	-0.04		
Previous month (as at 7 March 2022) (GWh)	5 688		
Change from last month (GWh)	-10.8%		
Change from April last year (GWh)	-2%		



Energy in storage (mainland Tasmania) - April 2021 to April 2022**



[^] Average seasonal demand for the energy in storage equivalent is approximately 962 GWh per month.

[#] Total system supply is 14 437 GWh (excludes Lake Gairdner, Lake Margaret and Lake Plimsoll).

[~] Inflows for the calendar month.

* System storage associated with Great Lake Environmental Extreme Risk Zone (EERZ).

** The HRL and PSL profiles were revised in August 2021, taking effect from 1 September 2021. This chart shows the revised profiles starting from September 2021.

Further information can be found at the Office of the Tasmanian Economic Regulator's website, available [here](#)

HRL = High Reliability Level (threshold to which reserve water is held for energy security purposes, where the reserve is sufficient to withstand a six month Basslink outage coinciding with a very low inflow sequence, and avoid extreme environmental risk for Great Lake).

PSL = Prudent Storage Level (additional storage to result in a low likelihood of entering the HRL under normal operating conditions).

EIS = Energy in storage (the volume of water available for electricity generation in Hydro Tasmania's dams as a percentage of full supply).

March statistics

Mainland Tasmanian generation during March 2022

Tasmanian monthly consumption 870.5 GWh

Renewable generation

Hydro generation 647.2 GWh

Wind generation 112.6 GWh

Gas

Operational

Gas generation 7.7 GWh

Basslink flows during March 2022

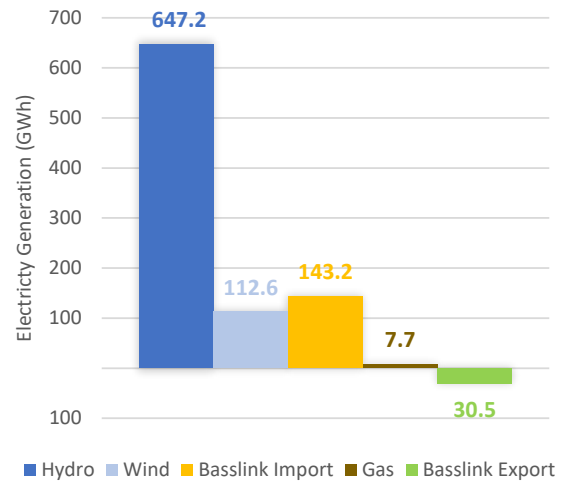
Basslink interconnector

Basslink imports 143.2 GWh

Basslink exports 30.5 GWh

Basslink net imports 112.8 GWh

Mainland Tasmanian generation mix (March 2022)



Energy security outlook

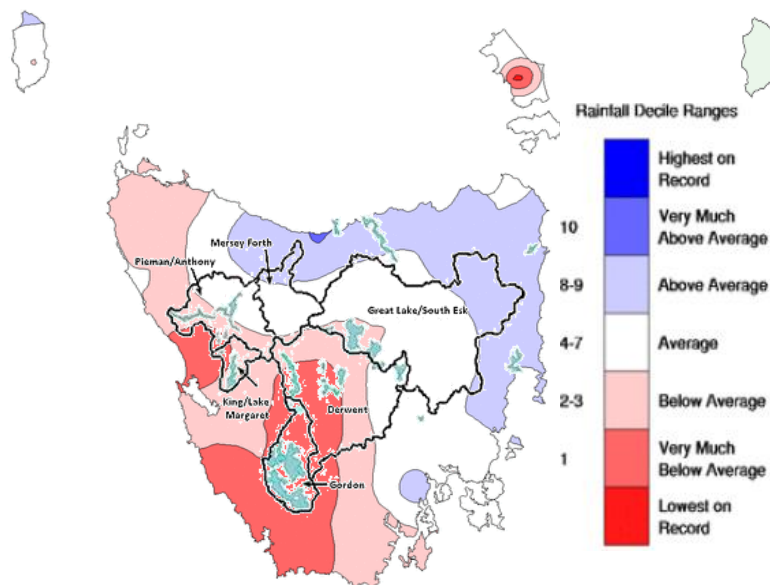
Rainfall in Tasmania - March 2022

March 2022 was the driest on record for some parts of the south-west coast, and overall it was 26 per cent below average. Statewide, it was the driest March since 2017, and rainfall was below average across western and southern Tasmania. The mean maximum temperature in March for Tasmania as a whole was 1.3°C above average. Maximum temperatures were in the warmest 10 per cent of March records for western Tasmania. The mean minimum for Tasmania overall was 0.92°C above average.

Three month forecast

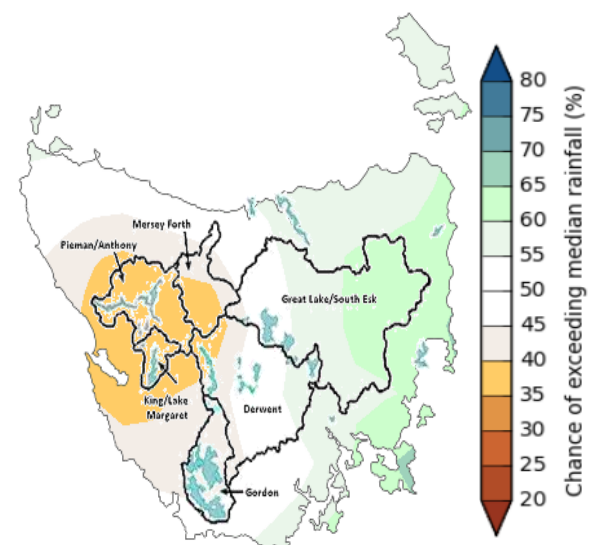
The Bureau of Meteorology's three month climate outlook for April 2022 to June 2022, issued on 31 March 2022, estimates that there is roughly equal chances of above or below median rainfall for most of Tasmania, apart from a small area of western Tasmania, where below median rainfall is forecast. Based on this forecast, Hydro Tasmania's major storages, Gordon, King/Lake Margaret, and Pieman/Anthony, are likely to receive below average inflows.

Monthly Rainfall Deciles for Tasmania 1 February 2022 - 28 February 2022



Source: Bureau of Meteorology, Monthly Climate Summary for Tasmania (link).

Likelihood of Exceeding the Median Rainfall April 2022 to June 2022



Source: Bureau of Meteorology, Monthly Climate Outlook (link).

Disclaimer: This report has been prepared in good faith using information sourced from NEM Review™ and the Australian Bureau of Meteorology, with additional data provided by Hydro Tasmania. The Office of the Tasmanian Economic Regulator assumes no liability as to the reliability and accuracy of the information provided.