



Gas Act 2000

NOTICE OF VARIATION NO. 17

of the

Gas Distribution (Construction) Licence

granted on

13 May 2003

to

Tas Gas Networks Pty Ltd

**under the former name of
Powerco Tasmania Pty Ltd**

ACN 104 499 569

7 February 2013

Pursuant to clause 6.1 of the licence and section 34 of the *Gas Act 2000*, the gas distribution (construction) licence granted on 13 May 2003 to Tas Gas Networks Pty Ltd under the former name of Powerco Tasmania Pty Ltd has been further amended such that Schedule 3 of the Licence is varied by adding Plan Numbers 10, 10A, and 10B and amending Plan Number 7, both as attached to this Notice as follows:

Location	Plan Number
Bell Bay	1 (Amended), 1A and 1B
Burnie	2 (Amended) & 2A
Devonport	3 (Amended 2)
Hobart	4 (Amended 3), 4A & 4B
Launceston	5 (Amended 2)
Longford	6 (Amended)
Ulverstone	7 (Amended 2) ⁴
Westbury	8 (Amended 2) ⁵
Wynyard	9 (Amended 2)
Smithton	10, 10A & 10B ⁶



.....
Raymond Chan

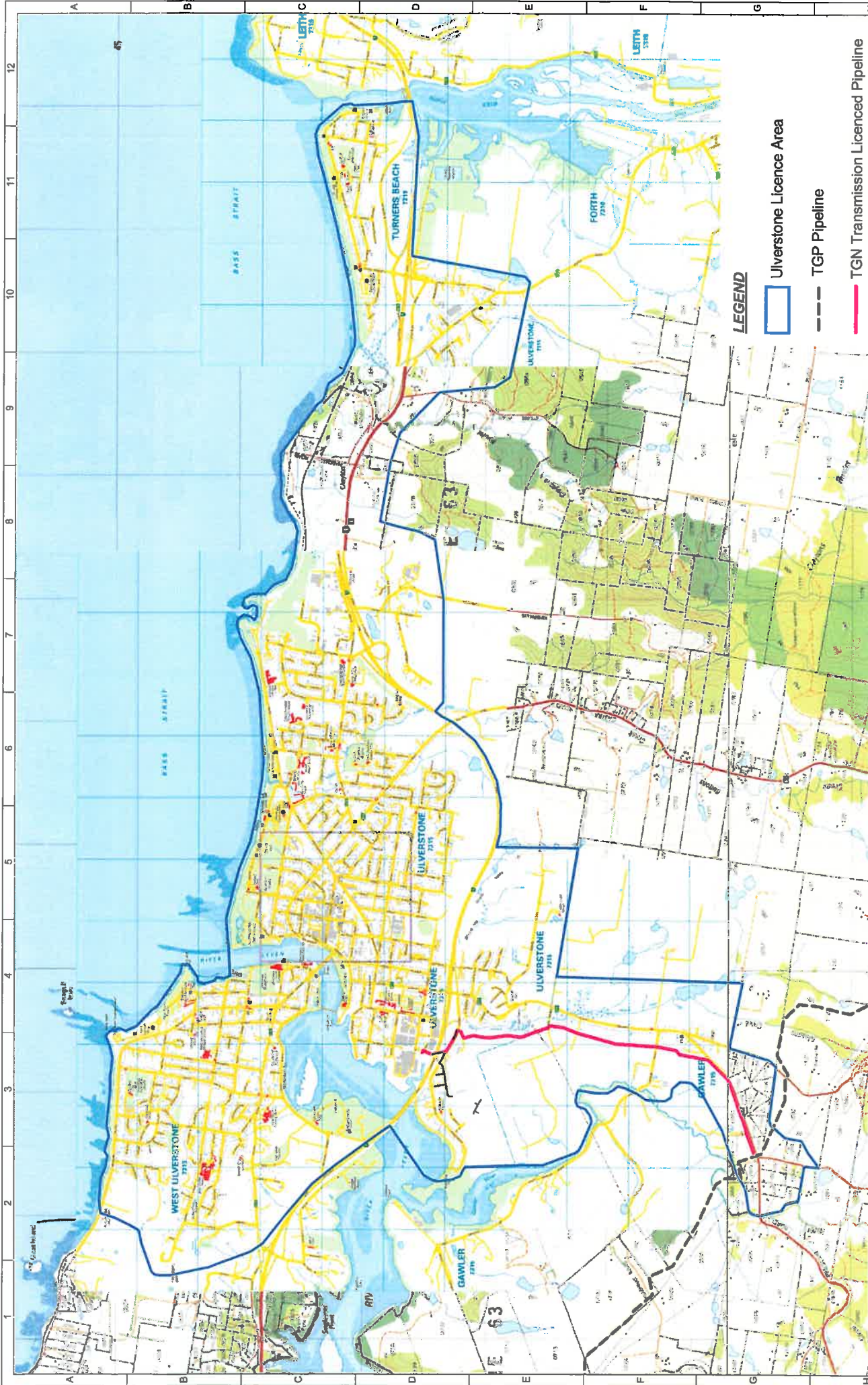
DELEGATE OF THE REGULATOR

7 February 2013

⁴ 7 October 2011 (Notice of Variation No. 16) and 7 February 2013 (Notice of Variation No. 17)

⁵ Notice of Variation No. 15

⁶ Inserted 7 February 2013 (Notice of Variation No. 17)



ASSET OWNER

TasGas
NETWORKS

THE INFORMATION CONTAINED HEREIN IS SUBJECT TO COPYRIGHT AND IS NOT TO BE COPIED, REPRODUCED OR TRANSMITTED IN ANY FORM OR BY ANY MEANS, WITHOUT THE EXPRESS WRITTEN APPROVAL OF THE ASSET MANAGER.

REV	DATE	DESCRIPTION	APPR	APPR
1	15/07/12	Re-branded and re-issued	GMB	AGB
			DRAFTED	CHECKED
			APPR	APPR

STATUS:

CONSULTANT:

TAS GAS NETWORKS - 681 ULVERSTONE
DISTRIBUTION LICENCE
SCHEDULE 3 AUTHORISED DISTRIBUTION SYSTEMS
ULVERSTONE, GAWLER AND TURNERS BEACH

DESIGNED	BY	DATE	SCALE	FILE	PROJECT
AS	AS	15/08/2011	1:1	TGN-681-NWLN-003.wor	681-003
DRAWN	BY	DATE	SUPERSEDES	SHEET	TOTAL SHEETS
AS	AS	15/08/2011		1	1
CHECKED	BY	DATE	SHEET	TOTAL SHEETS	DRAWING No.
AS	AS	15/08/2011	1	1	681-003
APPROVED	BY	DATE	SHEET	TOTAL SHEETS	DRAWING No.
AS	AS	15/08/2011	1	1	681-003

DRIVING NO. 1

REFERENCE DRAWINGS 2

3

4

5

6

7

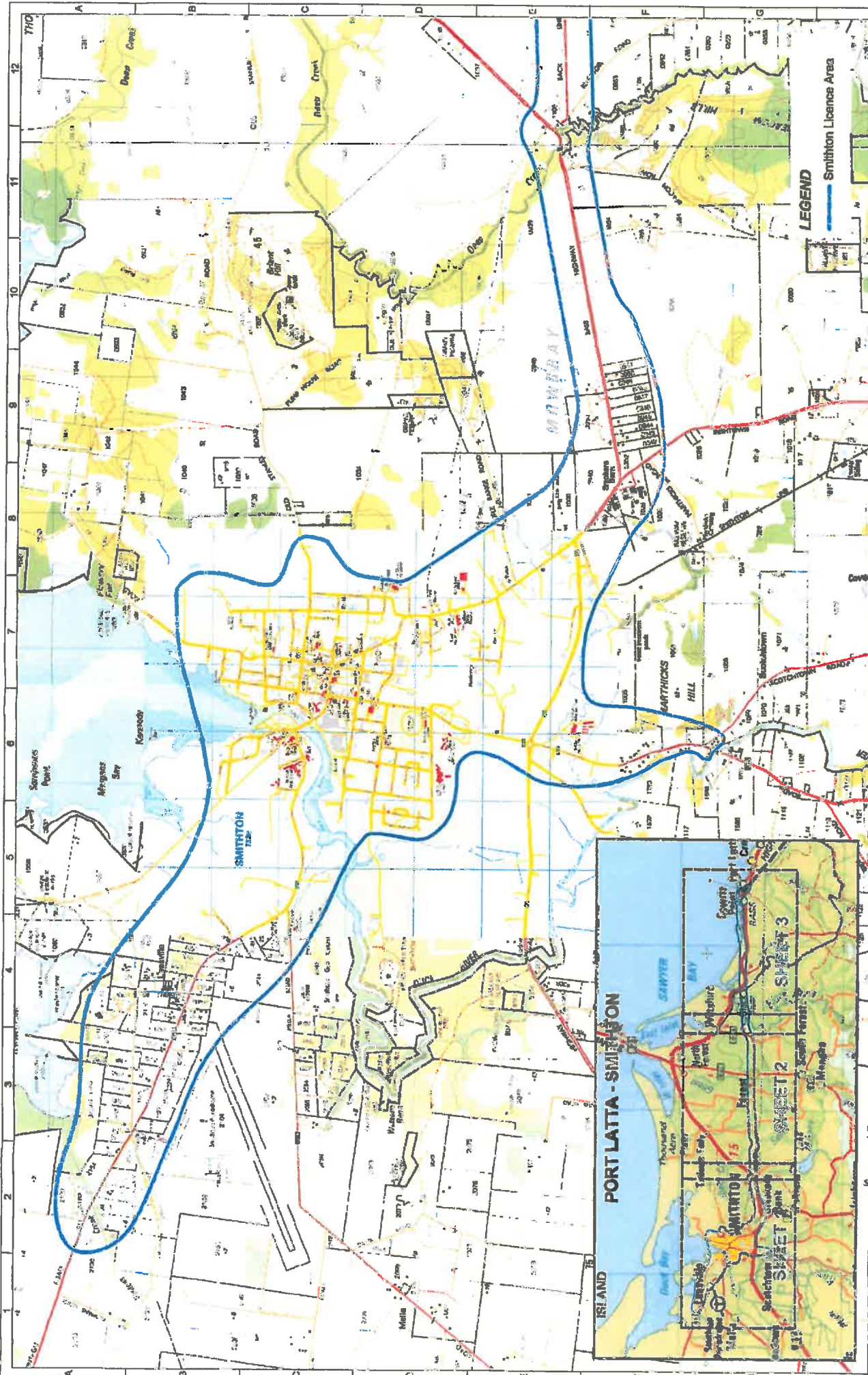
8

9

10

11

12



ASSET OWNER

TasGas
PORT LATTAS

THE INFORMATION ON THIS DRAWING IS SUBJECT TO THE TERMS AND CONDITIONS OF THE CONTRACT AND IS NOT TO BE USED IN WHOLE OR IN PART WITHOUT THE WRITTEN APPROVAL OF THE ASSET OWNER.

REFERENCE DRAWINGS

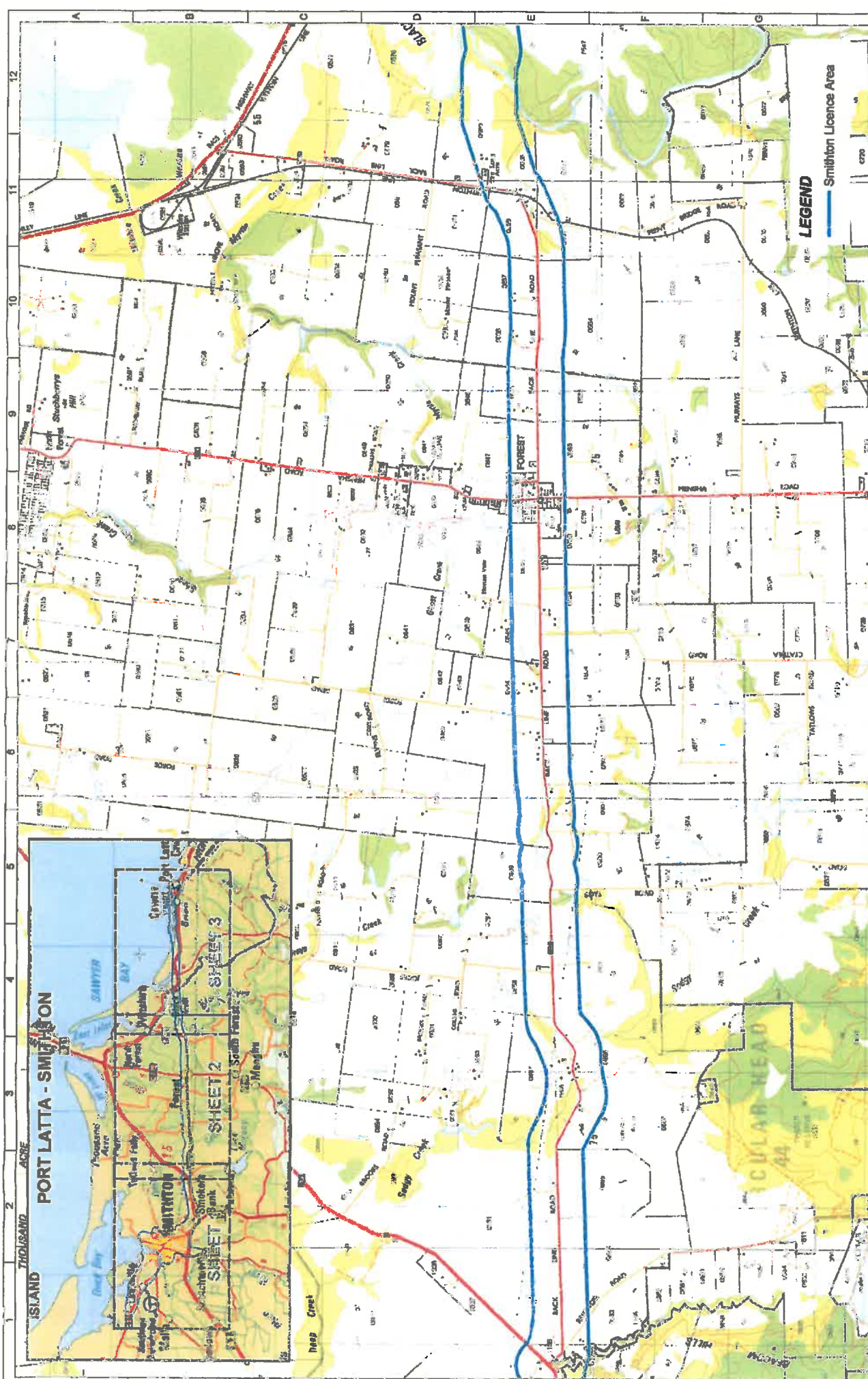
STATUS:

REV	DATE	DESCRIPTION	DESIGNED	CHECKED	APPROVED	DATE	SCALE	FILE	PROJECT
1	27/03	License Boundary Modified	ASB	ASB	ASB			TON-685-44-LR-001	PORT LATTAS

CONSULTANT:

DESIGNED	CHECKED	APPROVED	DATE	SCALE	FILE	PROJECT
ASB	ASB	ASB	4/12/2012	1:1	TON-685-44-LR-001	PORT LATTAS

TAS GAS NETWORKS - 685 PORT LATTA
SCHEDULE 3 AUTHORISED DISTRIBUTION SYSTEMS
PORT LATTA TO SMITHTON - SHEET 1



LEGEND
— Smithton Licence Area

**TAS GAS NETWORKS - 895 PORT LATTA
 SCHEDULE 3 AUTHORIZED DISTRIBUTION SYSTEMS
 PORT LATTA TO SMITHTON - SHEET 2**

STATUS:
 CONSULTANT:

REV	DATE	DESCRIPTION	DESIGNED	DRAWN	CHECKED	APPROVED
1	3/1/15	License Boundary Modified	ASB	ASB	ASB	ASB
			ASB	ASB	ASB	ASB
			ASB	ASB	ASB	ASB
			ASB	ASB	ASB	ASB

THE INFORMATION ON THIS DRAWING IS NOT TO BE COPIED OR REPRODUCED IN WHOLE OR IN PART WITHOUT THE WRITTEN APPROVAL OF THE ASSET MANAGER.

ASSET OWNER

DESIGNED	DRAWN	CHECKED	APPROVED
ASB	ASB	ASB	ASB
ASB	ASB	ASB	ASB
ASB	ASB	ASB	ASB



BY	DATE	SCALE	FILE	PROJECT
ASB	4/12/2012	ASB to ASB	TGN-895-NW-LN-001-NW	AJ
ASB	4/12/2012	ASB to ASB	TGN-895-NW-LN-001-NW	AJ
ASB	4/12/2012	ASB to ASB	TGN-895-NW-LN-001-NW	AJ
ASB	4/12/2012	ASB to ASB	TGN-895-NW-LN-001-NW	AJ



ASSET OWNER

TasGas NETWORKS

REFERENCE DRAWINGS

1	2	3	4	5	6	7	8	9	10	11	12

STATUS:

CONSULTANT:

TAS GAS NETWORKS - 688 PORT LATTA

SCHEDULE 3 AUTHORISED DISTRIBUTION SYSTEMS

PORT LATTA TO SMITHTON - SHEET 3

DESIGNED	AGE	DATE	SCALE	FILE	PROJECT
DRAWN	AGE	4/12/2012		TGN-LS-NS-ML-LA-001.wpd	AS
CHECKED	AGE	4/12/2012			REVISION
APPROVED	AGE	4/12/2012			1

LEGEND

— Smithton Licence Area

THE INFORMATION ON THIS DRAWING IS SUBJECT TO COPYRIGHTS AND IS NOT TO BE REPRODUCED IN WHOLE OR IN PART WITHOUT THE WRITTEN AUTHORIZATION OF THE ASSET MANAGER

REV	DATE	ISSUES	DESCRIPTION
1		STATUS	License Boundary Issued