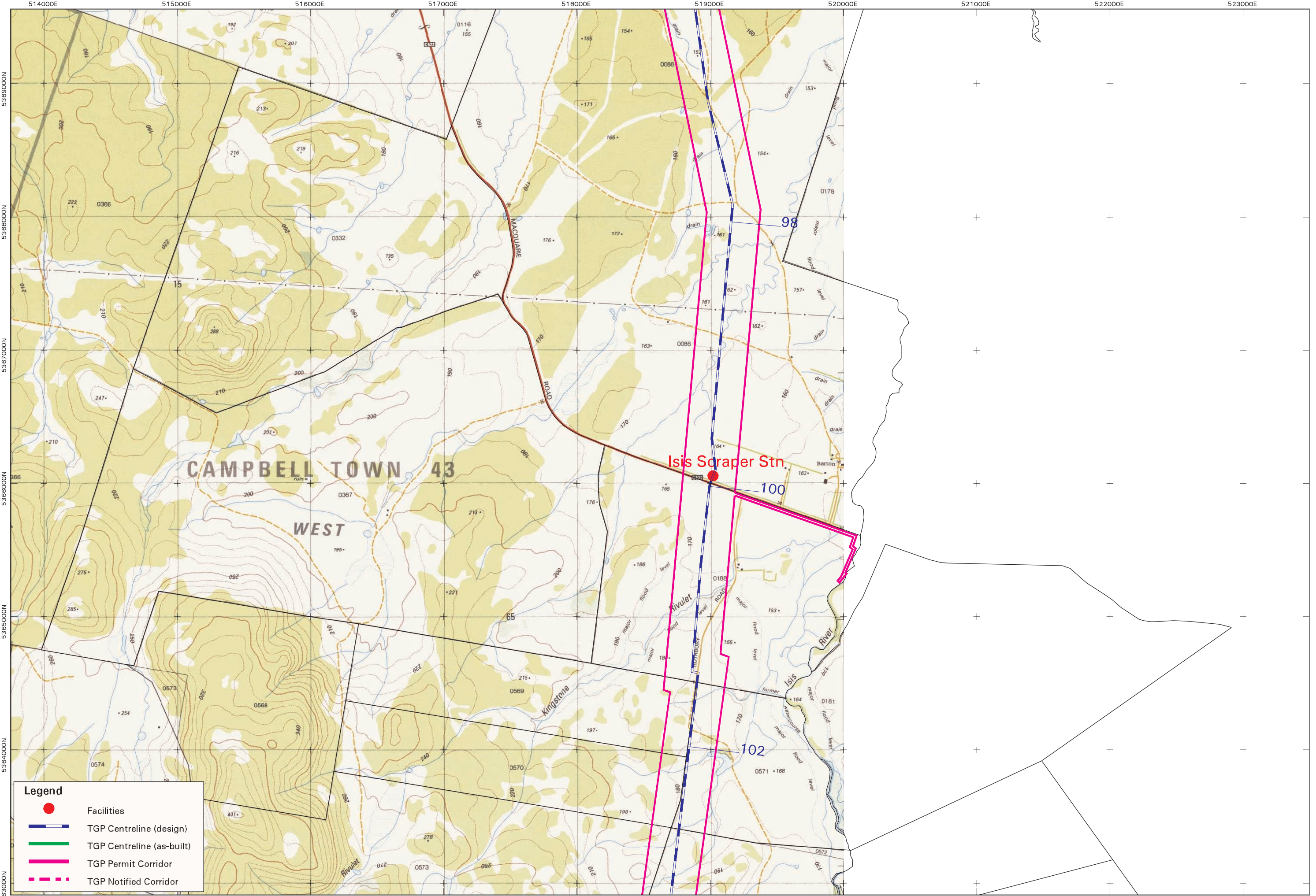


NOTE : While every effort was made to ensure the accuracy and currency of the information shown on this map, the Project Team does not accept any responsibility for errors or omissions that may have occurred.
 The facilities shown on this map are current as of April 2002, and are subject to change. The provision for future offtakes is an ongoing process to meet the demands of distributors and customers.
 Data Source: ArcInfo covers taspipe8a_pcorridor4 & ncorridor5



Legend

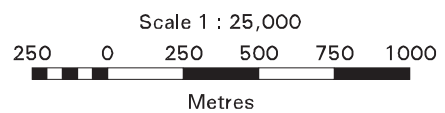
- Facilities
- TGP Centreline (design)
- TGP Centreline (as-built)
- TGP Permit Corridor
- TGP Notified Corridor

GIS
 Level 8
 85 Macquarie St.
 Hobart



Data Sourced From:
 Dept. PIW&E,
 Lester Franks & Co Pty Ltd.

APPLICATION FOR OPERATING LICENCE
Southern Extension
Bell Bay to Bridgewater



Australian Map Grid
 Universal Transverse Mercator Projection
 Zone: 55

MAP NO : A3-043 DATE : 18/04/02
 MAP REVISION : 1.0 SHEET : 14 of 29