



TASMANIAN ENERGY SECURITY

Monthly Dashboard



September 2018 edition

Report addresses energy security status as at the beginning of September 2018

Energy in storage

Energy in storage as at the beginning of September: **49.1%**

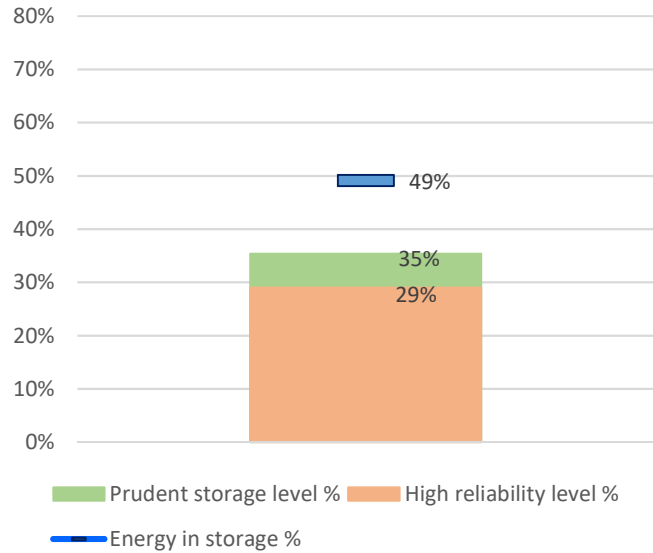
Energy in storage equivalent to 7.9 months average demand*

Energy in storage is above the Prudent Storage Level

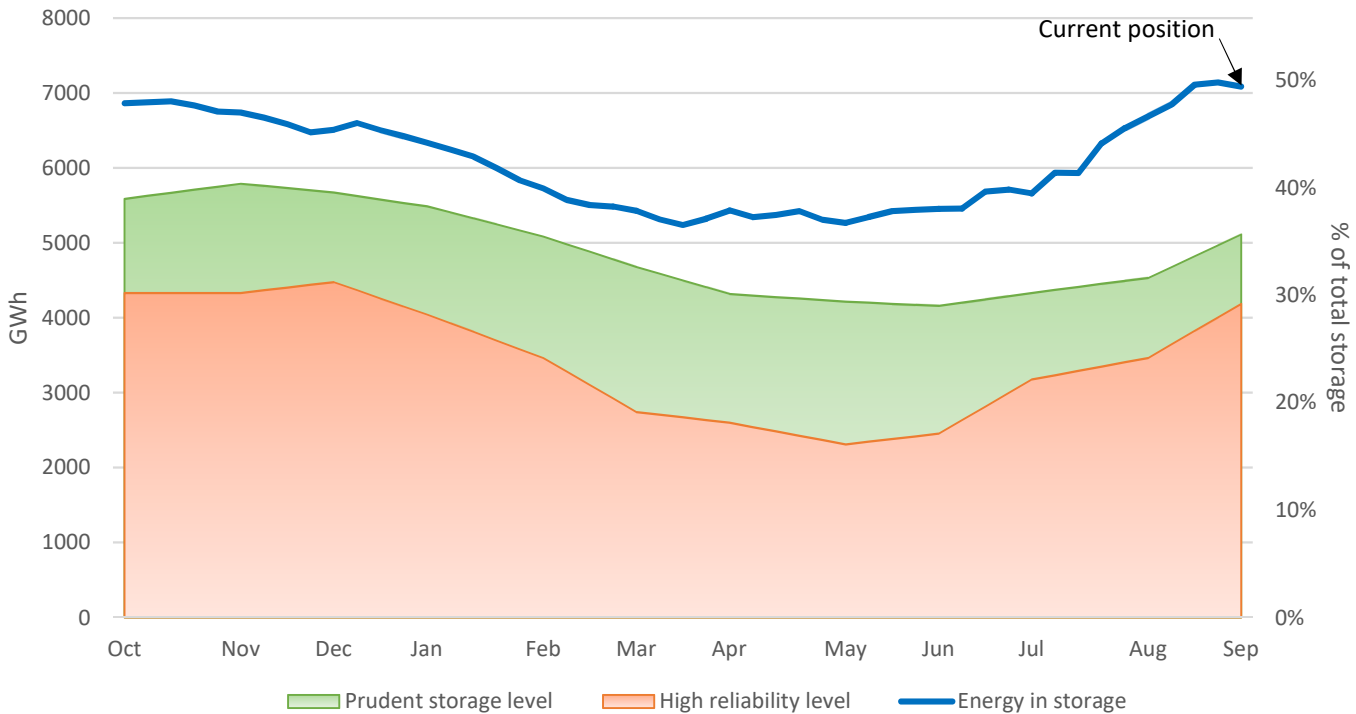
Commercial operation of Hydro Tasmania generation

*Average monthly demand is 900 GWh. Demand in summer months is generally below average. Demand in winter months is generally above average.

Energy in storage - September



Energy in storage - 12 monthly trend



HRL = High Reliability Level (reserve energy supply threshold, sufficient to supply Tasmanian demand for six months under extreme operating conditions).

PSL = Prudent Storage Level (additional storage to reduce the likelihood of entering the HRL under normal operating conditions).

EIS = Energy In Storage (relates to the volume of water in Hydro Tasmania's dams).

Energy security forecast

Based on information provided by Hydro Tasmania, the Monitor and Assessor estimates that it is highly probable Tasmanian hydro storages will remain above the High Reliability Level over the next 90 days, assuming average conditions.

Hydro Tasmania reports that storages remain above the High Reliability Level over the next 90 days in all of its simulated inflow sequences.

Basslink interconnector

Basslink interconnector status: Operational

Basslink import during August: 0.0 GWh

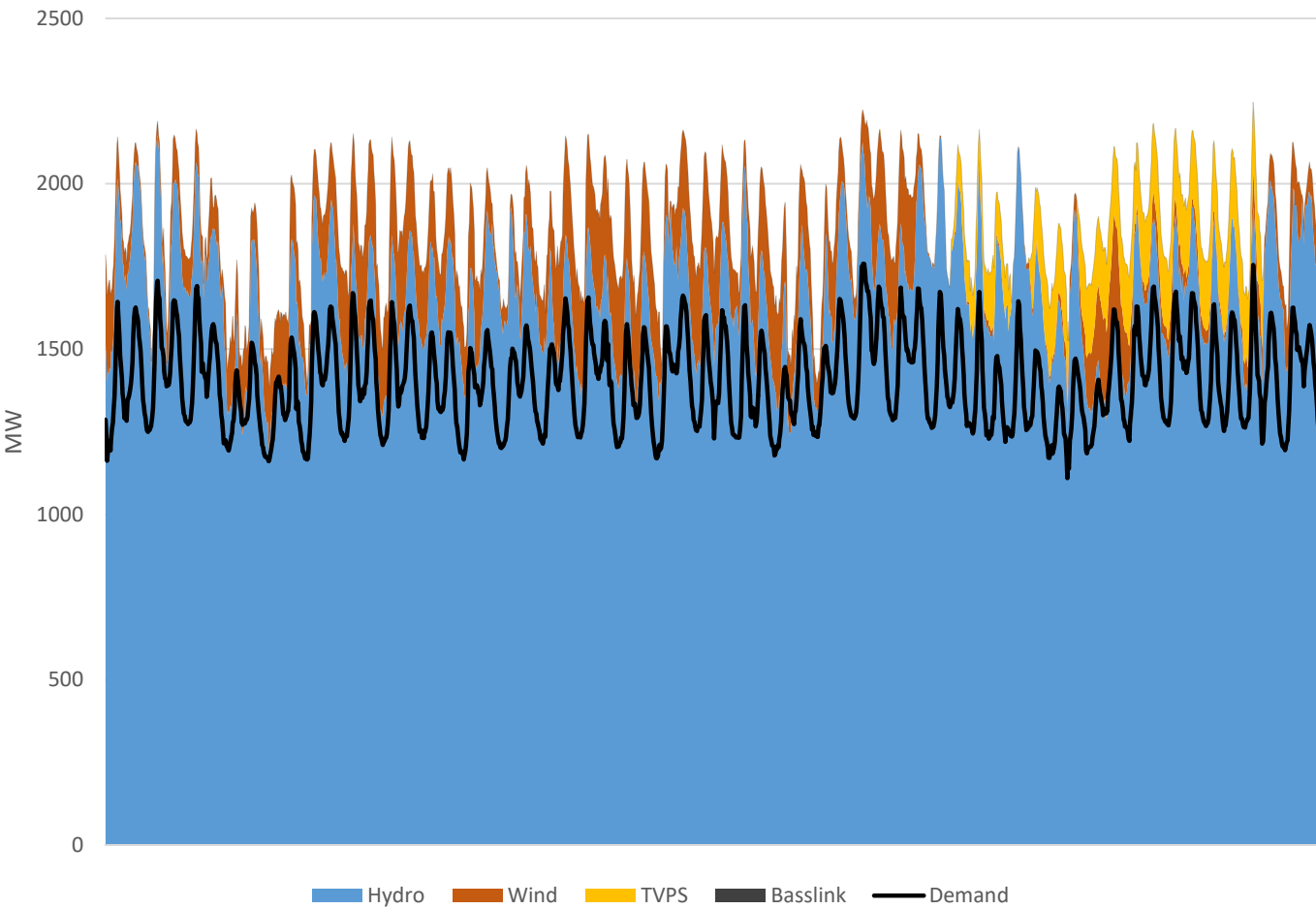
Tamar Valley Power Station

Tamar Valley Power Station (TVPS) status: Operational

TVPS generation during August: 32.8 GWh

Monthly generation mix

Total generation mix - August



Hydro generation, supplemented by wind, provided nearly all energy required to meet Tasmanian demand during August. Basslink and TVPS provided additional supply as required.

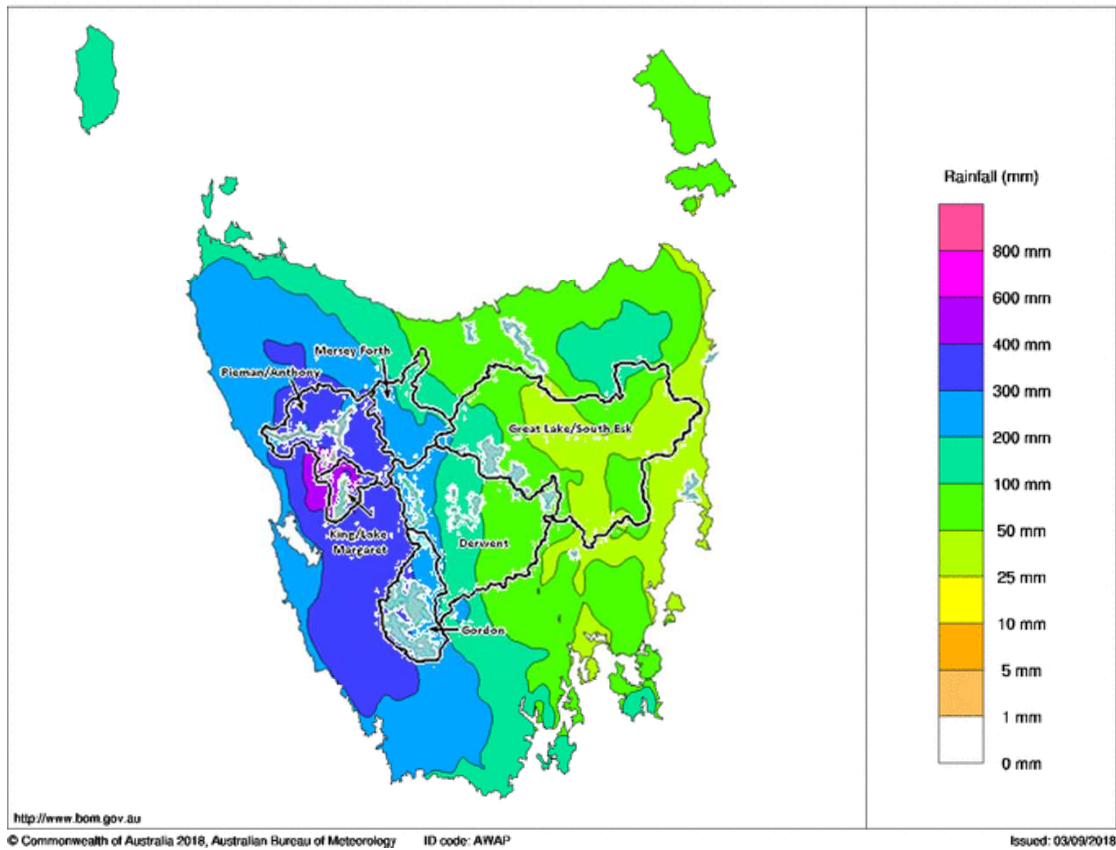
Note: On this chart, any generation above the black line (illustrating Tasmanian demand) denotes energy being exported via Basslink.

Key statistics

Energy in storage	7086.6 GWh
<i>Previous month</i>	<i>6531.8 GWh</i>
<i>Monthly change</i>	<i>554.9 GWh</i> ↑
Total inflow to Hydro Tasmania storages	1686.0 GWh
Tasmanian demand	1068.1 GWh
On island generation	
Hydro generation	1237.4 GWh
Wind generation	111.7 GWh
Gas generation (TVPS)	32.8 GWh
Basslink activity	
Basslink import	0.0 GWh
Basslink export	313.9 GWh

Rainfall in Tasmania - August

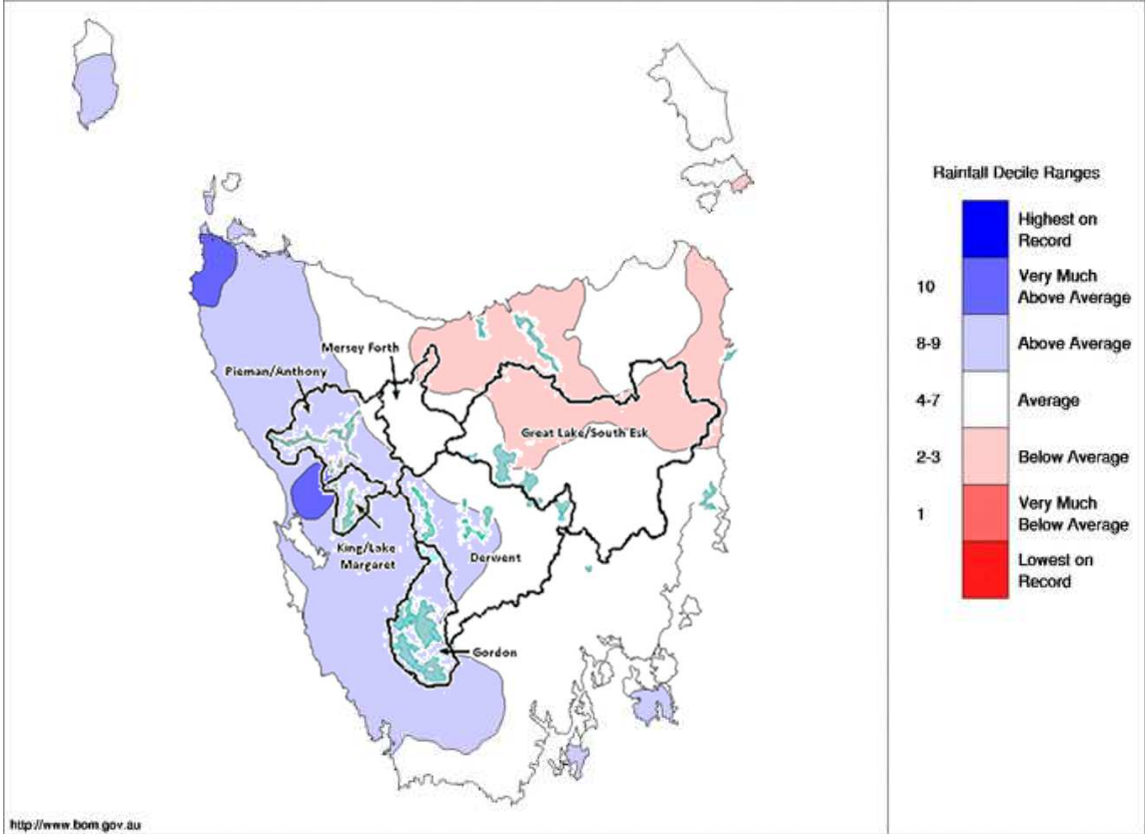
Tasmanian Rainfall totals (mm) August 2018
 Australian Bureau of Meteorology



Rainfall in August 2018 was above average in the west of the State over many of Hydro Tasmania's storage catchment areas. Areas of the central west coast received around 50 to 100 mm more than average. Rainfall was slightly below average in the central east and north of the State.

Rainfall in Tasmania - trends

Tasmanian Rainfall Deciles August 2018
 Distribution Based on Gridded Data
 Australian Bureau of Meteorology

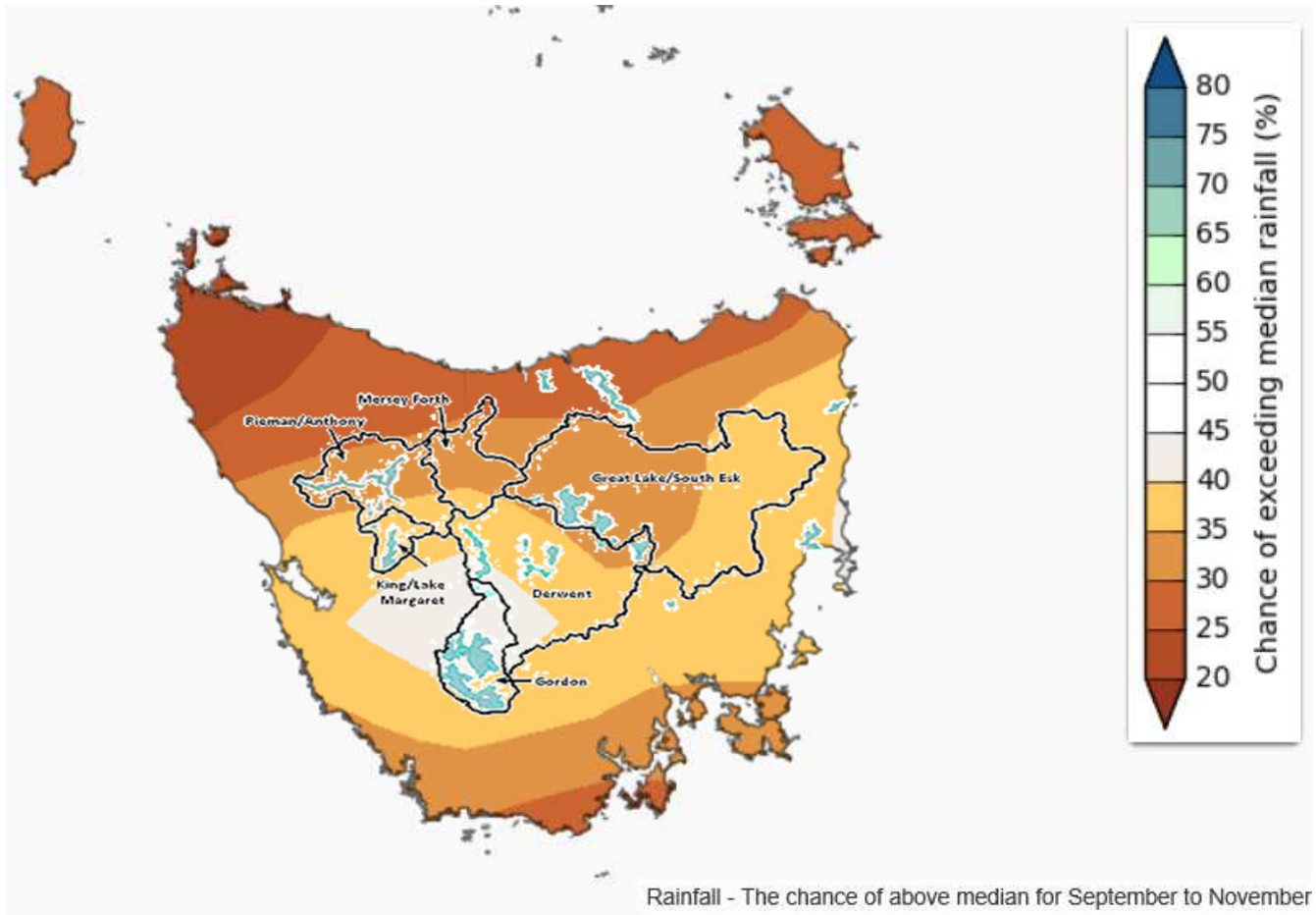


<http://www.bom.gov.au>
 © Commonwealth of Australia 2018, Australian Bureau of Meteorology ID code: AWAP Issued: 03/09/2018

The Bureau of Meteorology reports that during August the western highlands had more rain than usual while rainfall in the central north and northeast was below average. The map above shows rainfall deciles for the month in relation to Hydro Tasmania's storage catchment areas.

The Bureau of Meteorology has not identified 4-month or 7-month rainfall deficiencies in any Tasmanian regions.

Rainfall in Tasmania - three month forecast



Data relates to the chance of exceeding median rainfall over the next three months.

- >50% chance of exceeding median = likely to receive above average monthly rainfall
- <50% chance of exceeding median = likely to receive below average monthly rainfall
- 50% chance of exceeding median = likely to receive average monthly rainfall

The Tasmanian Economic Regulator (TER) publishes these monthly dashboards in its role as Tasmanian Energy Security Monitor and Assessor. The TER welcomes any comments or suggestions as to how it might develop this publication in future to make it more valuable to readers.

Please provide feedback by email with the topic line 'Monitor and Assessor Monthly Dashboard' to office@economicregulator.tas.gov.au

Disclaimer: This report has been prepared in good faith using information sourced from NEM Review™ and the Australian Bureau of Meteorology, with additional data provided by Hydro Tasmania. The Office of the Tasmanian Economic Regulator assumes no liability as to the reliability and accuracy of the information provided.