



# TASMANIAN ENERGY SECURITY

## Monitor and Assessor

### Monthly Dashboard



**November 2018 edition**

Report addresses energy security status as at the beginning of November 2018

### Status

Energy in storage is above Prudent Storage Level

Energy in storage equivalent to 7.4 months average demand\*

Risk response<sup>^</sup>: Normal. Commercial operation of Hydro Tasmania generation  
Hydro Tasmania reports that storages remain above the High Reliability Level over the next 90 days in all of its simulated inflow sequences.

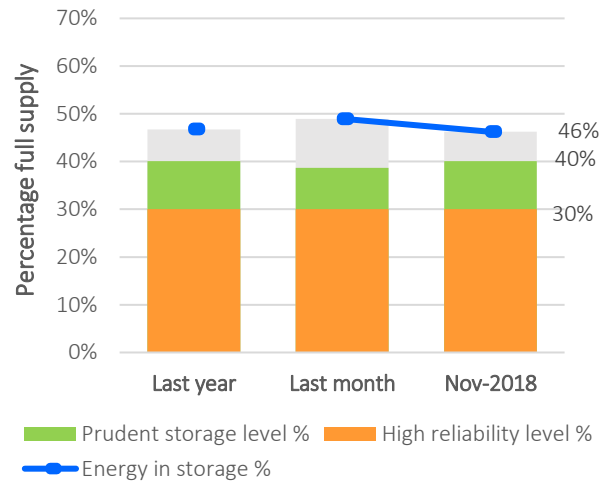
Energy security assessment:  
No additional monitoring activities required

### Energy in storage

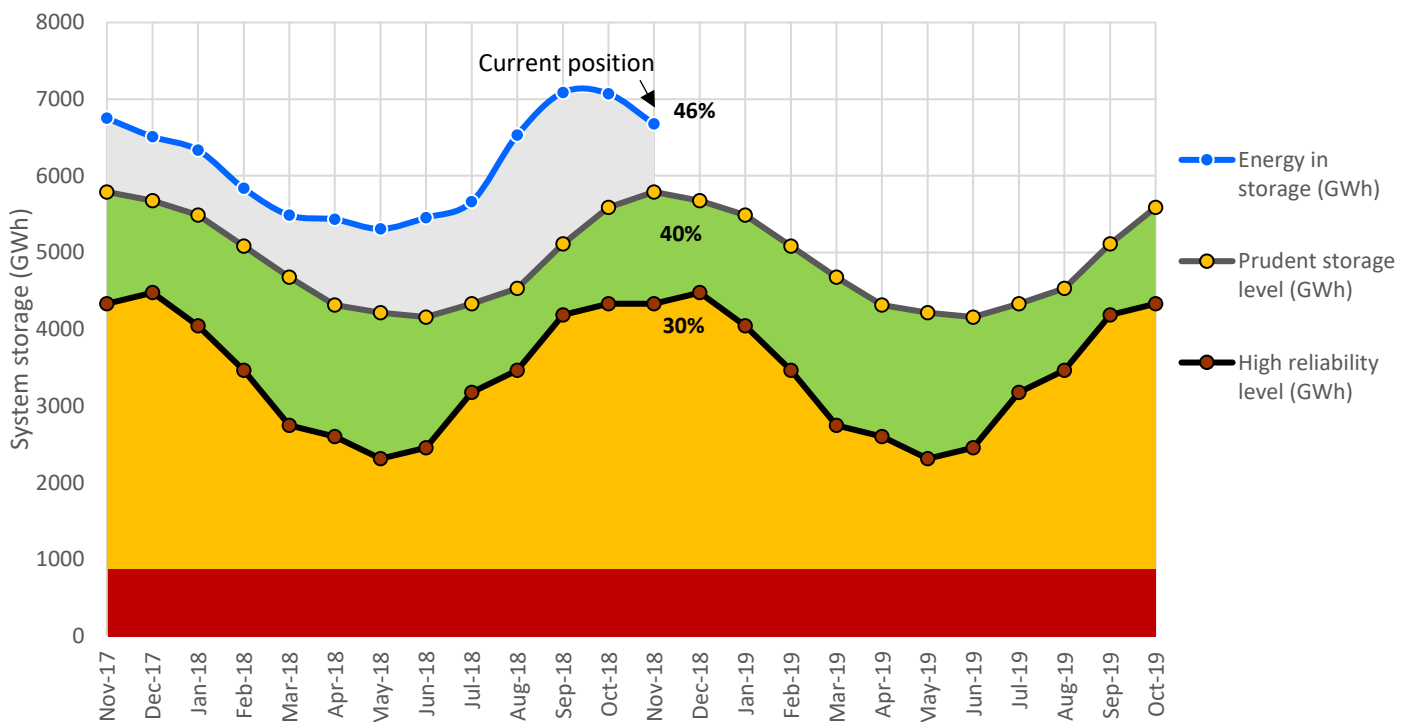
	System	PSL	HRL
Beginning of this month (GWh)	6676	5789	4331
Percentage full supply	<b>46.2%</b>	40%	30%
Total October inflows (GWh)	285		
Beginning of last month (GWh)	7071		
Change from last month (GWh)	-5.6%	↓	
Compared to last year (GWh)	-1%	↓	

System (14437 GWh) - excludes Lake Gardiner, Lake Margaret & Lake Plimsol

### Energy in storage - status



### Energy in storage - 24 month



\*Average monthly demand is 900 GWh. Demand in summer months is generally below average. Demand in winter months is generally above average.

<sup>^</sup> Energy security risk response framework, Tasmanian Energy Security Taskforce Final Report, August 2017. (click for link)

HRL = High Reliability Level (minimum threshold, sufficient to meet Tasmanian demand for six months).

PSL = Prudent Storage Level (additional storage to reduce the likelihood of entering the HRL under normal operating conditions).

EIS = Energy In Storage (the volume of water in Hydro Tasmania's dams as a % of full supply).

## October statistics

### Tasmanian generation during October

Tasmanian monthly demand 882.0 GWh

### Renewable generation

Hydro generation 732.4 GWh

Wind generation 70.6 GWh

### Tamar Valley Power Station

Operational

TVPS generation 19.1 GWh

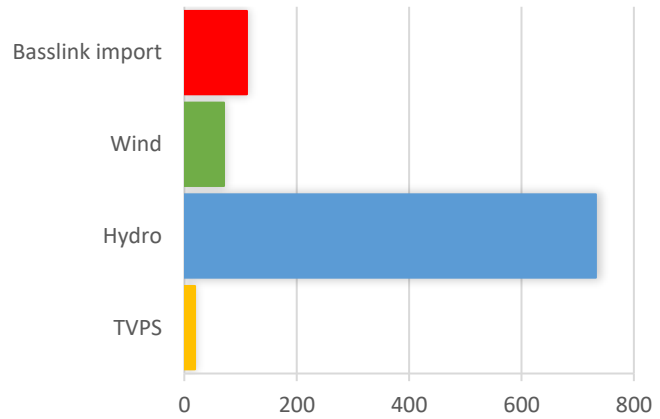
### Basslink interconnector

Operational

Basslink import 111.5 GWh

Basslink export 51.7 GWh

### Monthly generation mix



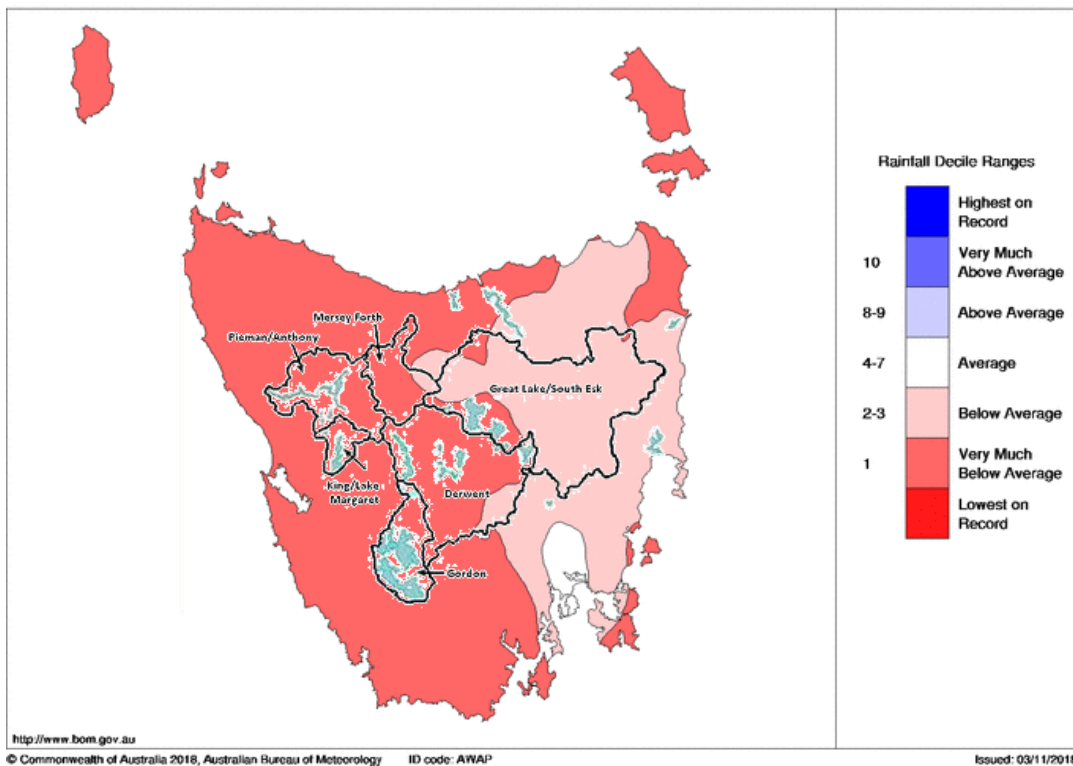
Hydro generation, supplemented by wind, provided nearly all energy required to meet Tasmanian demand during October. TVPS and Basslink provided additional energy as required.

## Energy security outlook

### Rainfall in Tasmania - October

The Bureau of Meteorology's monthly climate summary reports that October rainfall was below average across Tasmania, and very much below average in many areas. The map below shows rainfall deciles for the month in relation to Hydro's storage catchments.

Tasmanian Rainfall Deciles October 2018  
Distribution Based on Gridded Data  
Australian Bureau of Meteorology



Source: Bureau of Meteorology, Monthly Climate Summary for Tasmania (link).

### Three month forecast

The Bureau of Meteorology's three month climate outlook for November 2018 to January 2019, issued 25 October 2018, shows that drier than average conditions are likely for Tasmania, particularly in the North West.

Source: Bureau of Meteorology, Monthly Climate Outlook (link).

*Disclaimer: This report has been prepared in good faith using information sourced from NEM Review™ and the Australian Bureau of Meteorology, with additional data provided by Hydro Tasmania. The Office of the Tasmanian Economic Regulator assumes no liability as to the reliability and accuracy of the information provided.*