



# TASMANIAN ENERGY SECURITY

## Monthly Dashboard



May 2018 edition

Report addresses energy security status as of April 2018

### Energy in storage

Energy in storage as at end of April: **37.6%**

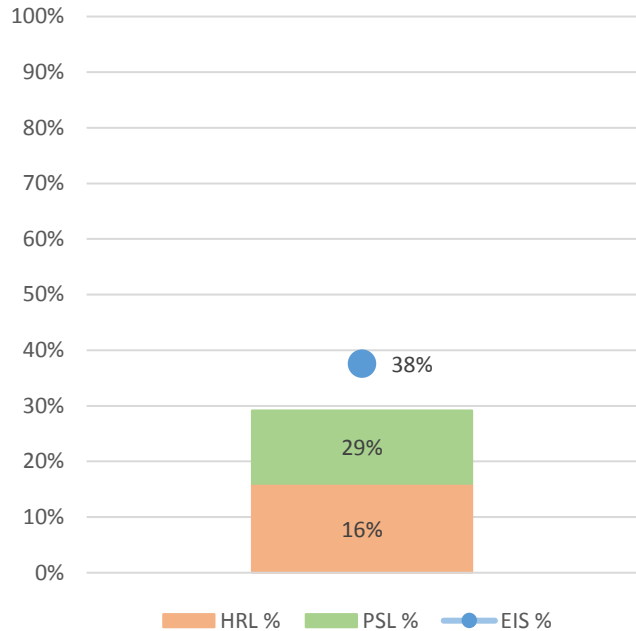
Energy in storage equivalent to 6.0 months average demand\*

Energy in storage is above Prudent Storage Level

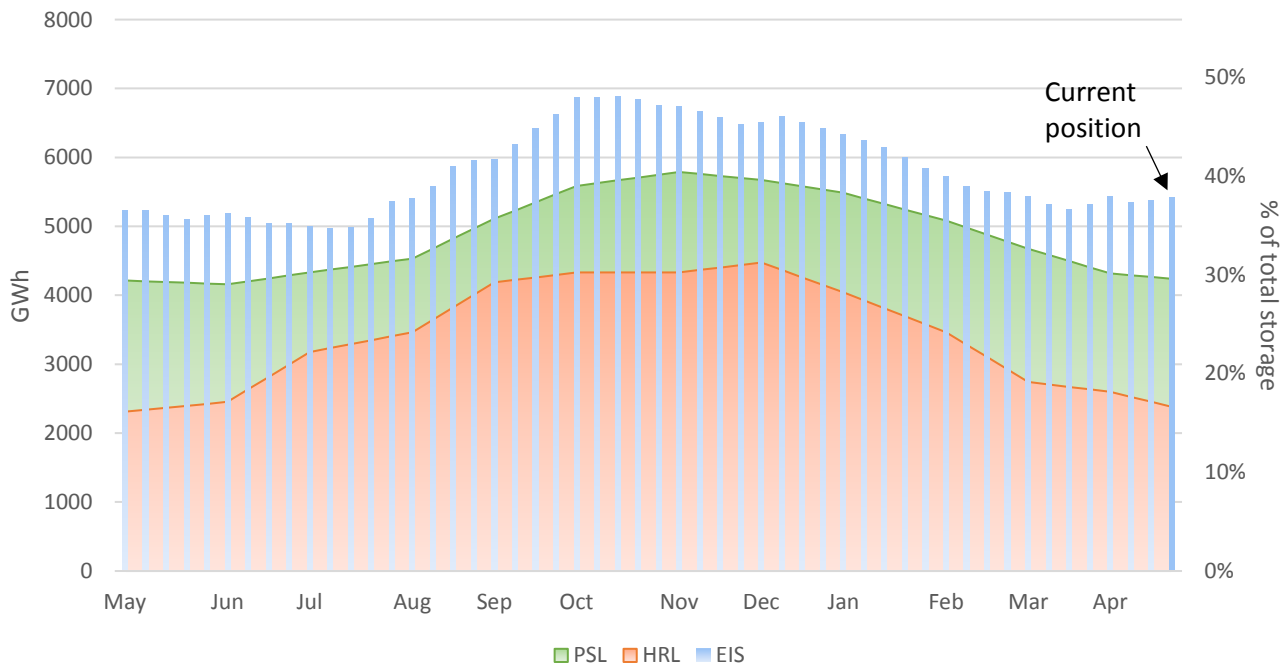
Commercial operation of Hydro Tasmania generation

\*Average monthly demand is 900 GWh. Demand in summer months is generally below average. Demand in winter months is generally above average.

Energy in storage - April



Energy in storage - 12 monthly trend



HRL = High Reliability Level (reserve energy supply threshold, sufficient to supply Tasmanian demand for six months under extreme operating conditions).

PSL = Prudent Storage Level (additional storage to reduce the likelihood of entering the HRL under normal operating conditions).

EIS = Energy In Storage (relates to the volume of water in Hydro Tasmania's dams).

## Energy security forecast

Based on information provided by Hydro Tasmania, and taking into account the current status of the Basslink interconnector, the Monitor and Assessor estimates that it is highly probable Tasmanian hydro storages will remain above the High Reliability Level over the next 90 days, assuming average conditions. The Monitor and Assessor will continue to monitor the energy security situation.

Hydro Tasmania reports that storages remain above the High Reliability Level over the next 90 days in all of its simulated inflow sequences.

## Basslink interconnector

Basslink interconnector status: Unavailable as of 24 March 2018  
Basslink Pty Ltd has advised that the interconnector will return to service after 31 May 2018

Basslink import during April: 0.0 GWh

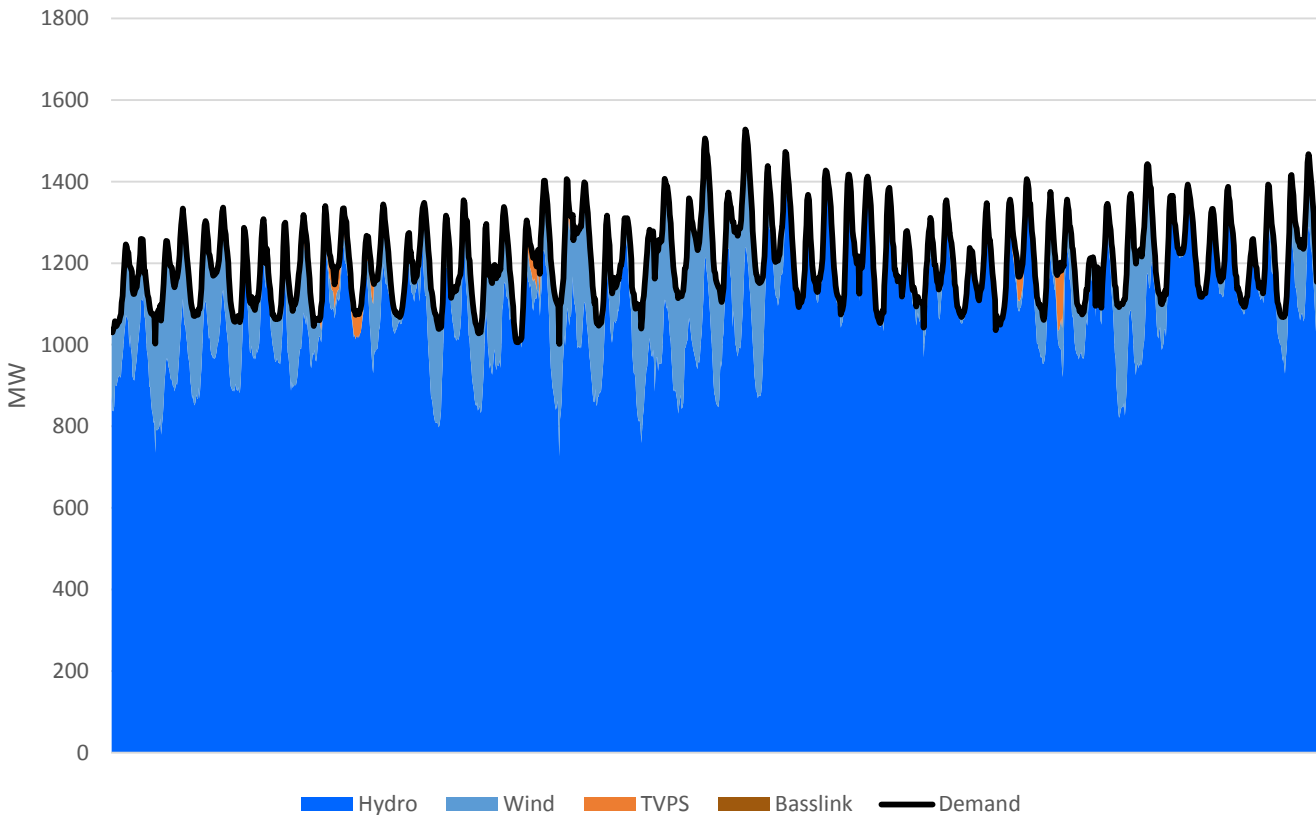
## Tamar Valley Power Station

Tamar Valley Power Station (TVPS) status: Operational but currently not generating

TVPS generation during April: 4.5 GWh

## Monthly generation mix

Total generation mix - April



Hydro generation, supplemented by wind, provided nearly all energy required to meet Tasmanian demand during April. TVPS provided a small amount of peak generation during the month, but most of its generation units remain on standby for annual maintenance. Basslink has been temporarily unavailable for electricity transfer since 24 March 2018.

Note: On this chart, any generation above the black line (illustrating Tasmanian demand) denotes energy being exported via Basslink.

## Key statistics - April

Average energy in storage 5393.5 GWh

Previous month 5325.8 GWh

Monthly change 67.7 GWh ↑

Total inflow to Hydro Tasmania storages 627.0 GWh

Tasmanian demand 867.9 GWh

### On island generation

Hydro generation 776.0 GWh

Wind generation 87.4 GWh

Gas generation (TVPS) 4.5 GWh

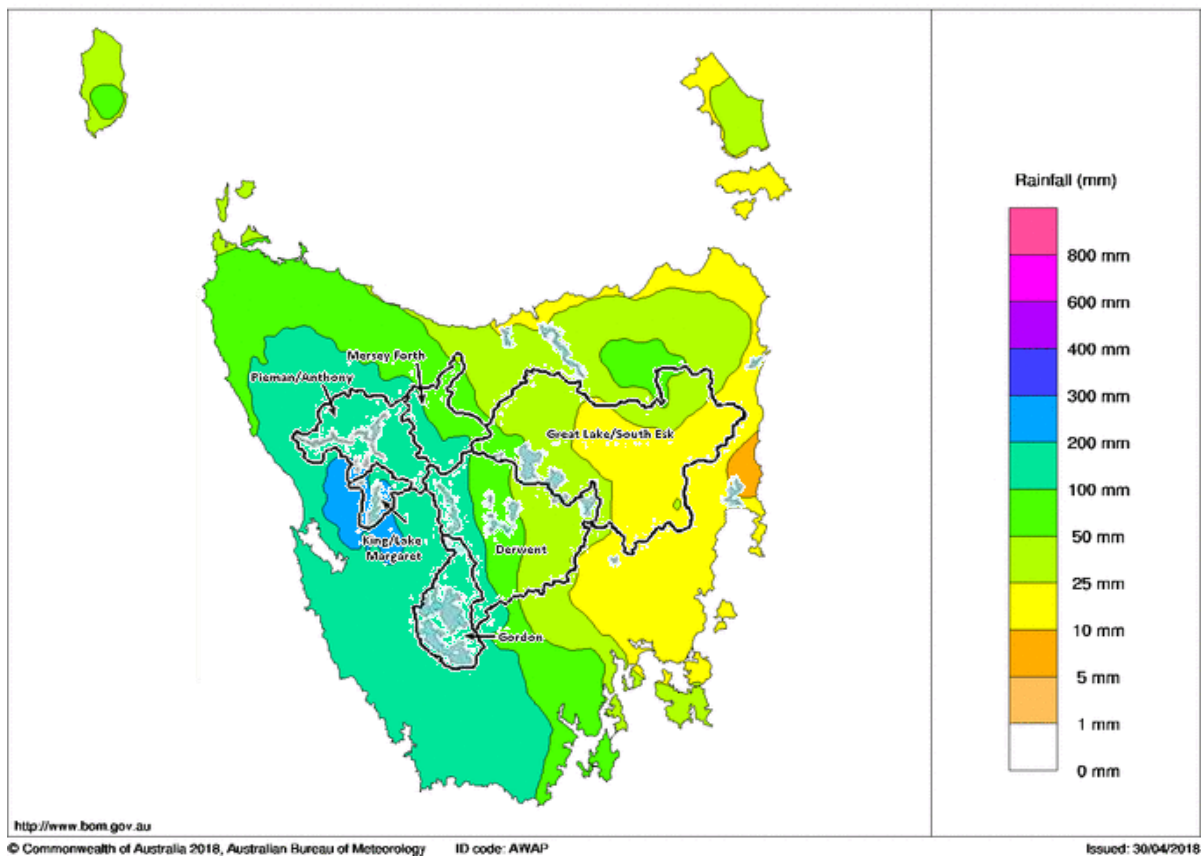
### Basslink activity

Basslink import 0.0 GWh

Basslink export 0.0 GWh

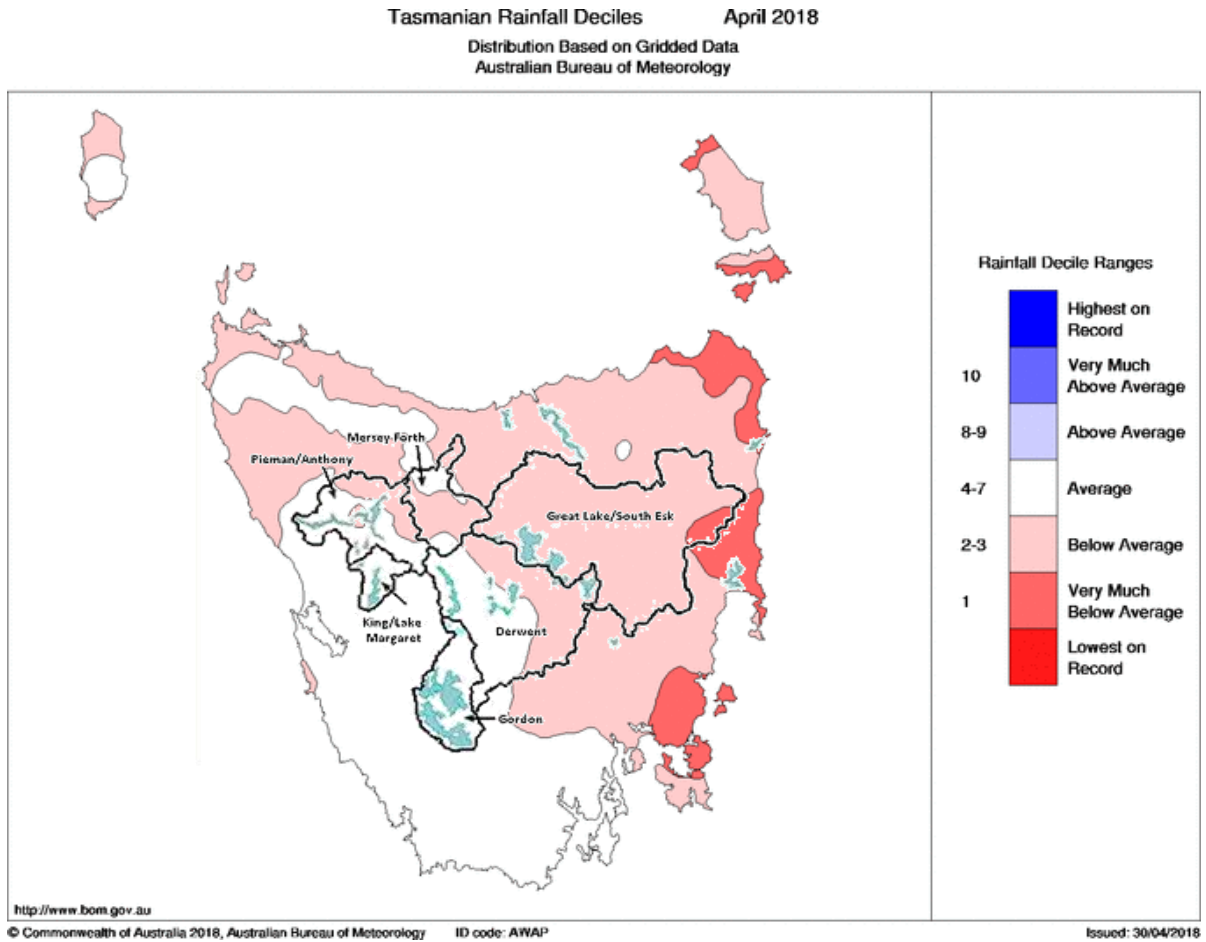
## Rainfall in Tasmania - April

Tasmanian Rainfall totals (mm) April 2018  
Australian Bureau of Meteorology



The Bureau of Meteorology reports that Tasmania's total rainfall for April was below average for most areas, and especially low in parts of the East Coast.

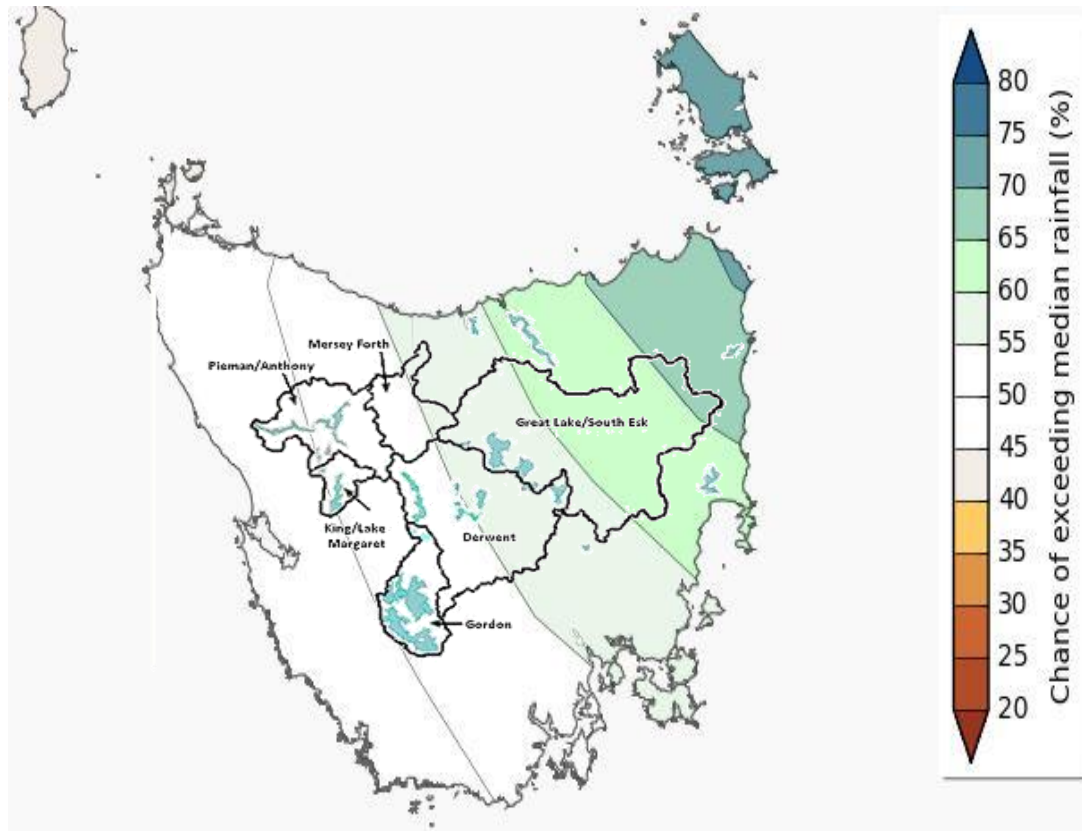
## Rainfall in Tasmania - trends



Rainfall during April was below average for most of Tasmania and particularly low in parts of the East Coast. Rainfall was close to or above average in the southwest and far south. The majority of Hydro Tasmania's catchments experienced average or below average rainfall.

Following above average rainfall in Tasmania in recent months, serious to severe rainfall deficiencies remain limited to a narrow strip on the east coast. The areas that the Bureau of Meteorology has identified as experiencing rainfall deficiencies have no overlap with Hydro Tasmania's catchment areas.

## Rainfall in Tasmania - three month forecast



Data relates to the chance of exceeding median rainfall over the next three months.

>50% chance of exceeding median = likely to receive above average monthly rainfall

<50% chance of exceeding median = likely to receive below average monthly rainfall

50% chance of exceeding median = likely to receive average monthly rainfall

The Tasmanian Economic Regulator (TER) publishes these monthly dashboards in its role as Tasmanian Energy Security Monitor and Assessor. The TER welcomes any comments or suggestions as to how it might develop this publication in future to make it more valuable to readers.

Please provide feedback by email with the topic line 'Monitor and Assessor Monthly Dashboard' to [office@economicregulator.tas.gov.au](mailto:office@economicregulator.tas.gov.au)

*Disclaimer: This report has been prepared in good faith using information sourced from NEM Review™ and the Australian Bureau of Meteorology, with additional data provided by Hydro Tasmania. The Office of the Tasmanian Economic Regulator assumes no liability as to the reliability and accuracy of the information provided.*