



TASMANIAN ENERGY SECURITY

Monthly Dashboard



August 2018 edition

Report addresses energy security status as of July 2018

Energy in storage

Energy in storage as at end of July: **45.2%**

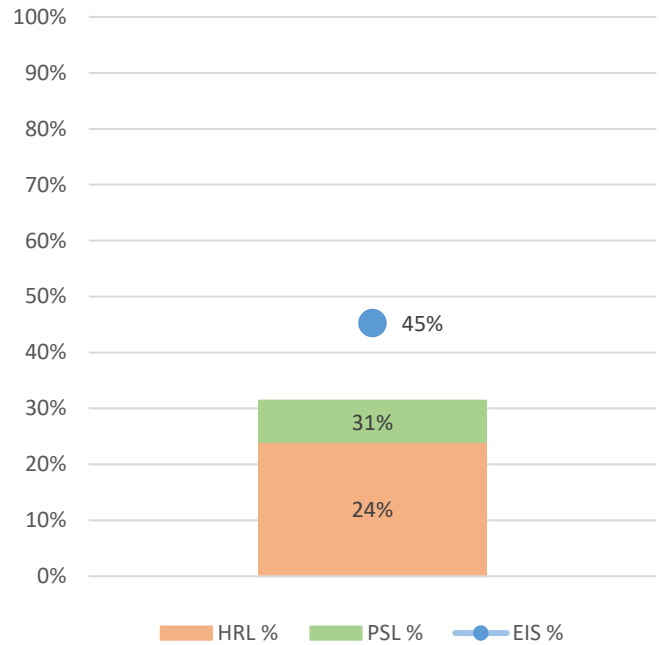
Energy in storage equivalent to 7.3 months average demand*

Energy in storage is above Prudent Storage Level

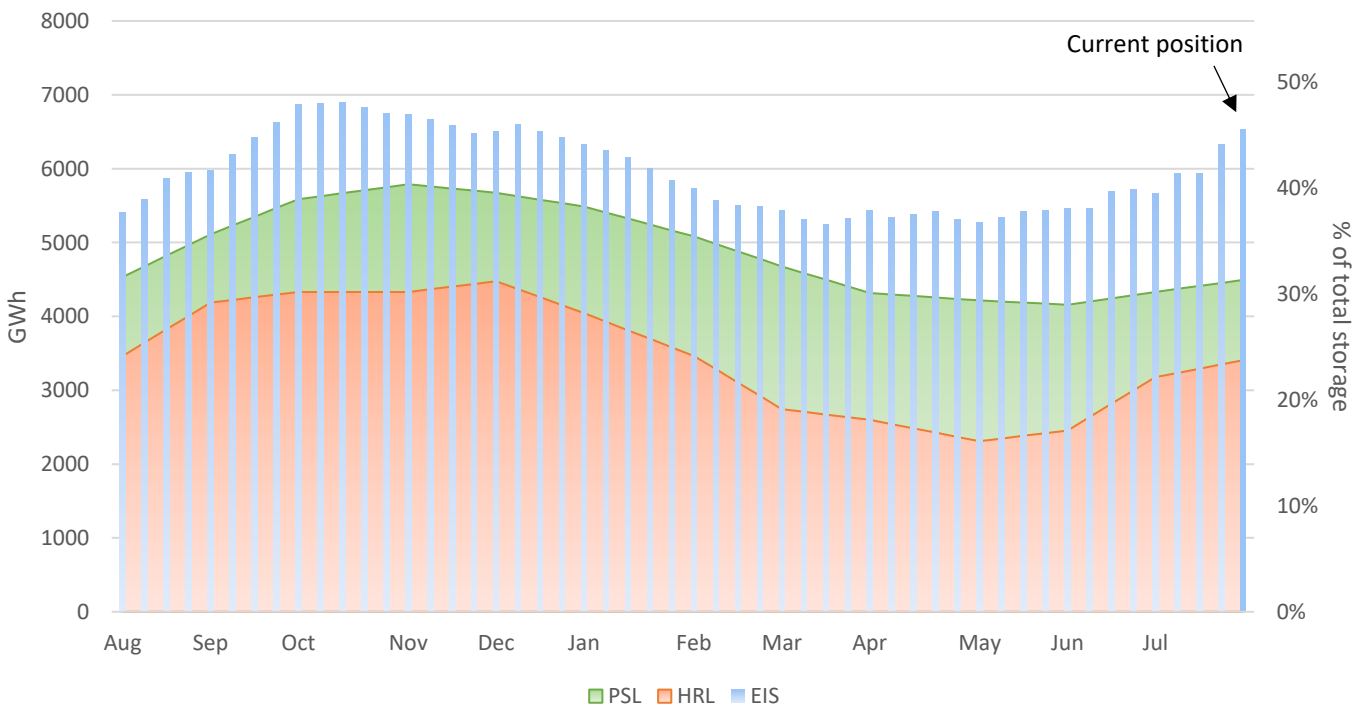
Commercial operation of Hydro Tasmania generation

*Average monthly demand is 900 GWh. Demand in summer months is generally below average. Demand in winter months is generally above average.

Energy in storage - July



Energy in storage - 12 monthly trend



HRL = High Reliability Level (reserve energy supply threshold, sufficient to supply Tasmanian demand for six months under extreme operating conditions).

PSL = Prudent Storage Level (additional storage to reduce the likelihood of entering the HRL under normal operating conditions).

EIS = Energy In Storage (relates to the volume of water in Hydro Tasmania's dams).

Energy security forecast

Based on information provided by Hydro Tasmania, the Monitor and Assessor estimates that it is highly probable Tasmanian hydro storages will remain above the High Reliability Level over the next 90 days, assuming average conditions.

Hydro Tasmania reports that storages remain above the High Reliability Level over the next 90 days in all of its simulated inflow sequences.

Basslink interconnector

Basslink interconnector status: Operational

Basslink import during July: 4.2 GWh

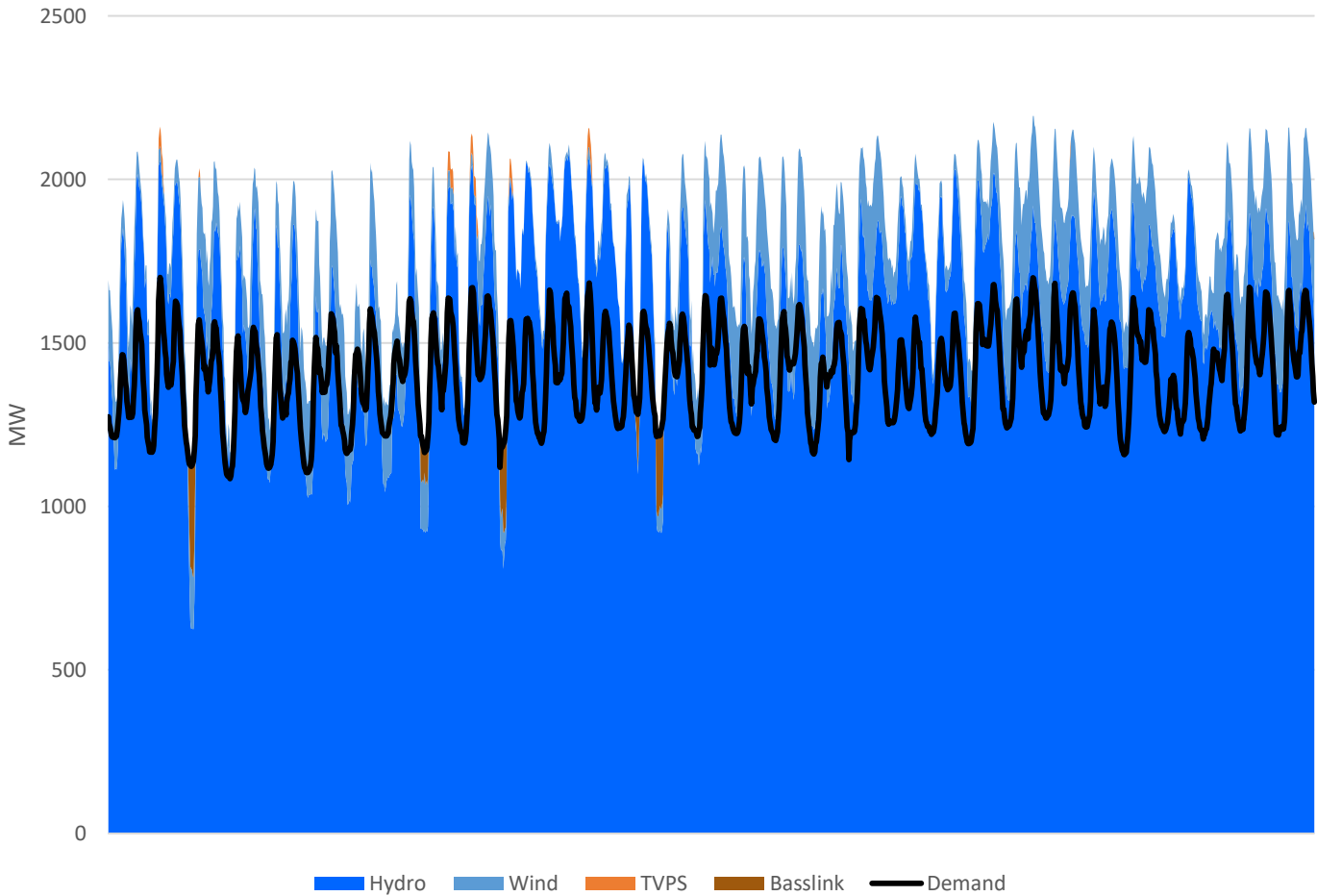
Tamar Valley Power Station

Tamar Valley Power Station (TVPS) status: Operational

TVPS generation during July: 1.0 GWh

Monthly generation mix

Total generation mix - July



Hydro generation, supplemented by wind, provided nearly all energy required to meet Tasmanian demand during July. Basslink and TVPS provided additional supply as required.

Note: On this chart, any generation above the black line (illustrating Tasmanian demand) denotes energy being exported via Basslink.

Key statistics - July

Average energy in storage 6078.2 GWh

Previous month 5578.7 GWh

Monthly change 499.5 GWh ↑

Total inflow to Hydro Tasmania storages 2172.0 GWh

Tasmanian demand 1062.5 GWh

On island generation

Hydro generation 1197.4 GWh

Wind generation 122.1 GWh

Gas generation (TVPS) 1.0 GWh

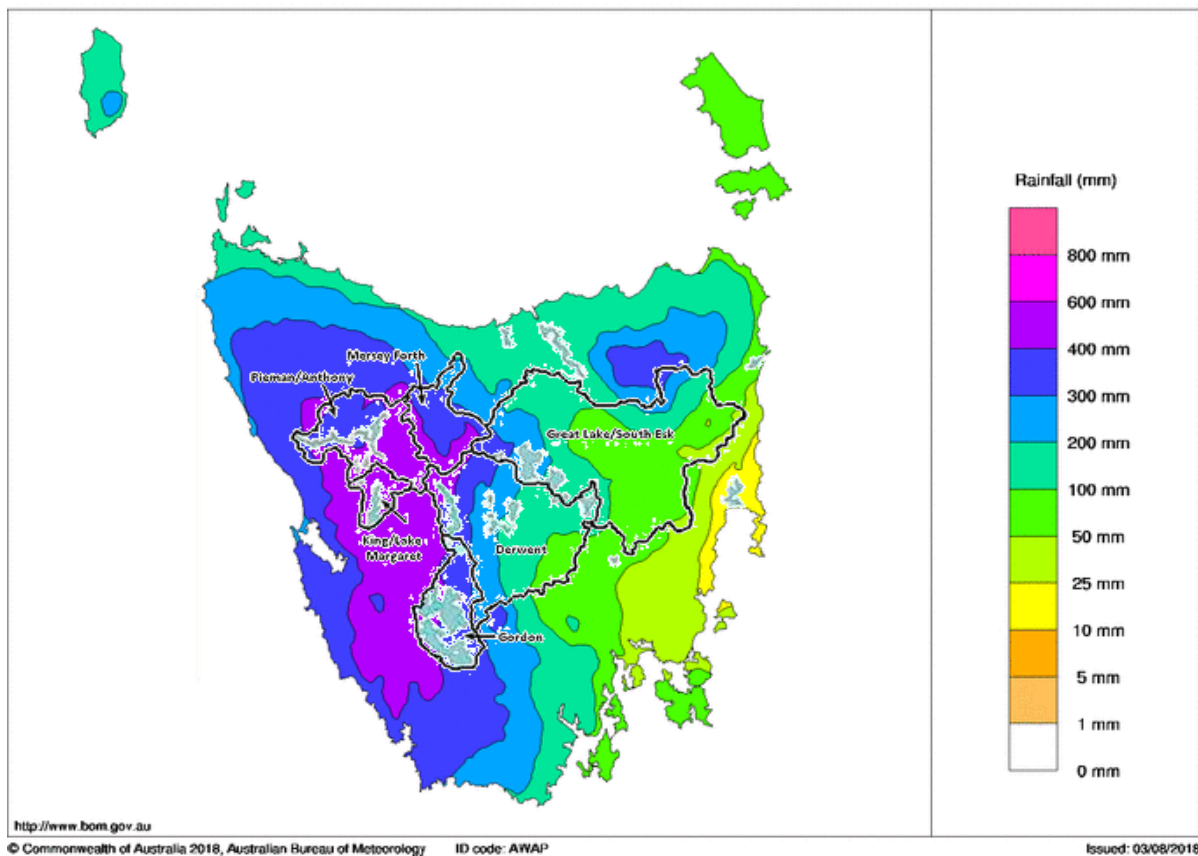
Basslink activity

Basslink import 4.2 GWh

Basslink export 262.2 GWh

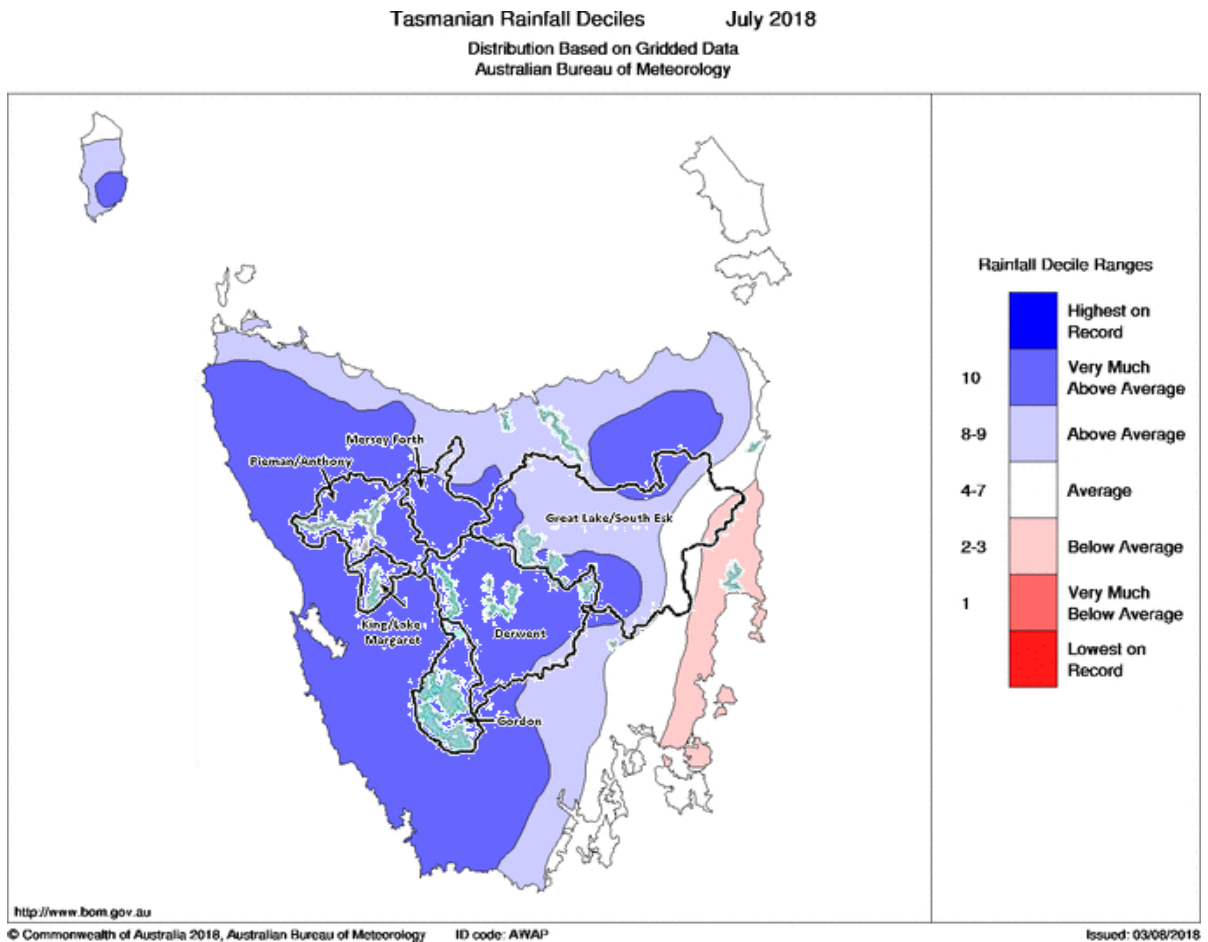
Rainfall in Tasmania - July

Tasmanian Rainfall totals (mm) July 2018
Australian Bureau of Meteorology



Tasmania's total rainfall for the month was 47 per cent above the July average, making it the eighth wettest July on record. Several significant rain events crossed the State during the month causing flooding in some rivers.

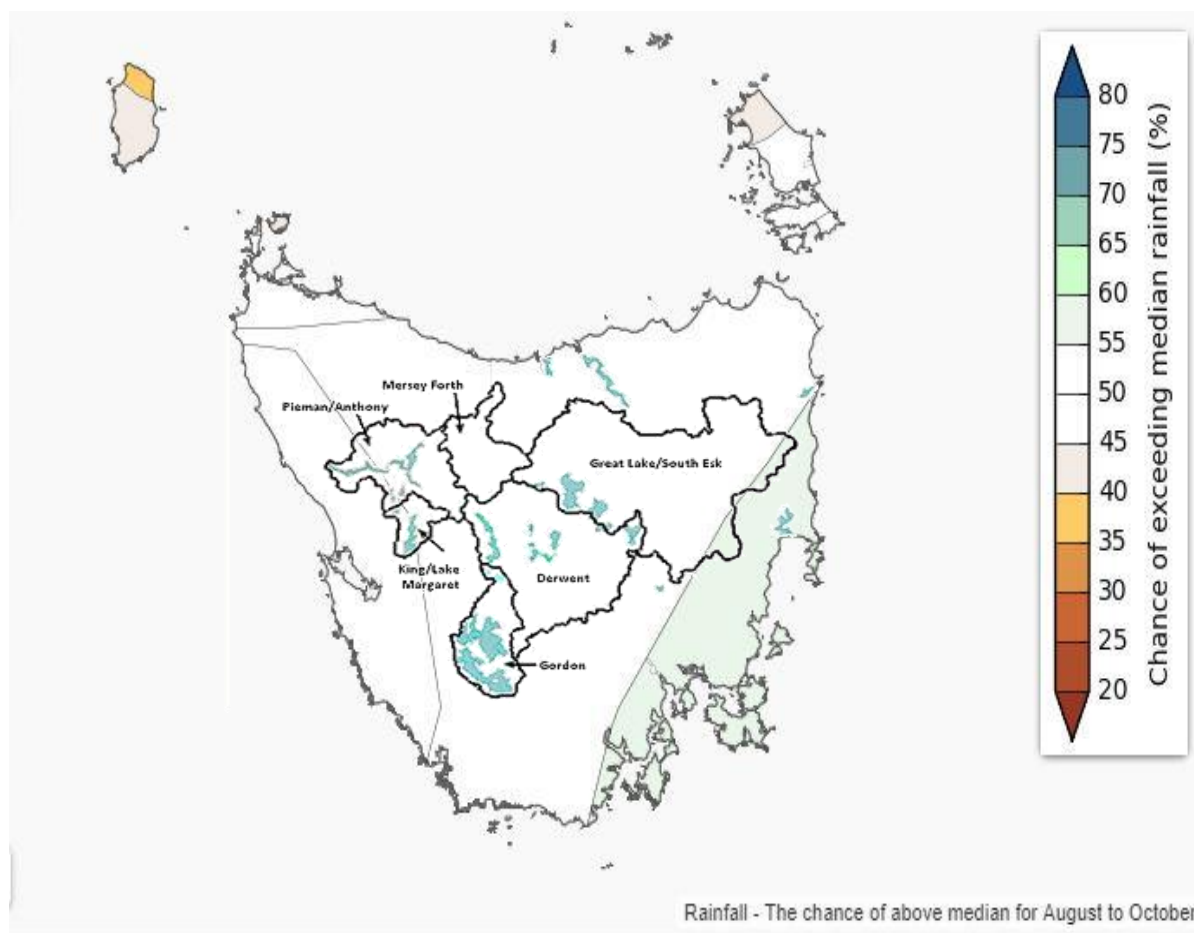
Rainfall in Tasmania - trends



The Bureau of Meteorology reports that July rainfall totals were above average in most Tasmanian regions, particularly the west and northeast, but below average on the East Coast. All of Hydro Tasmania's catchment areas received above average rainfall and several of its smaller storages are currently full to capacity.

Following high rainfall during July, serious to severe 16-month rainfall deficiencies in Tasmania are now limited to a narrow strip on the East Coast. The Bureau of Meteorology has not identified 4-month or 7-month rainfall deficiencies in any Tasmanian regions.

Rainfall in Tasmania - three month forecast



Data relates to the chance of exceeding median rainfall over the next three months.

>50% chance of exceeding median = likely to receive above average monthly rainfall

<50% chance of exceeding median = likely to receive below average monthly rainfall

50% chance of exceeding median = likely to receive average monthly rainfall

The Tasmanian Economic Regulator (TER) publishes these monthly dashboards in its role as Tasmanian Energy Security Monitor and Assessor. The TER welcomes any comments or suggestions as to how it might develop this publication in future to make it more valuable to readers.

Please provide feedback by email with the topic line 'Monitor and Assessor Monthly Dashboard' to office@economicregulator.tas.gov.au

Disclaimer: This report has been prepared in good faith using information sourced from NEM Review™ and the Australian Bureau of Meteorology, with additional data provided by Hydro Tasmania. The Office of the Tasmanian Economic Regulator assumes no liability as to the reliability and accuracy of the information provided.