

TASMANIAN MARKET WATCH

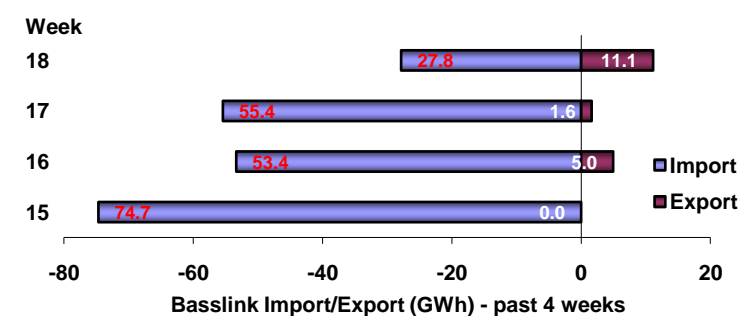
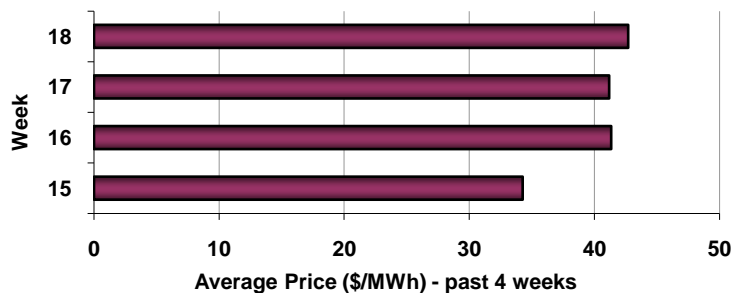
Weekly Market Data Analysis



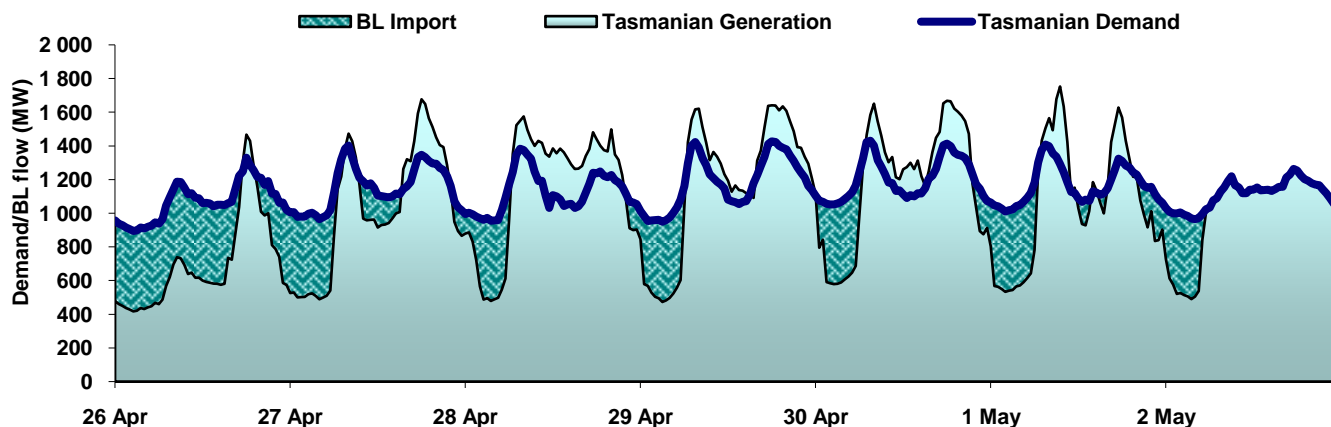
Week 18: 26 April 2015 to 2 May 2015 (Sunday - Saturday)

Week at a Glance

Average Price (Vol Weighted)	42.70	\$/MWh
Median Price	37.62	\$/MWh
Average Price last year	35.62	\$/MWh
NEM Average Price (excl. Tas)	45.34	\$/MWh
% of time Price < \$50/MWh	77.4	%
Storage	3649	GWh
Percentage Full	25.2	%
Compared to last week	101 ↓	GWh
Max Demand	1430	MW
Min Demand	895	MW
Average Demand	1144	MW
Weekly Energy Demand	206.08	GWh
Basslink		
Total Export	11.13	GWh
Total Import	27.85	GWh
% time counter price Flow	15.8	%
Total FCAS Costs (Tas)	41.14	\$1000s



Tasmanian Demand & Basslink flow during the week



Water Storage Situation

(as at Monday 27 April 2015)

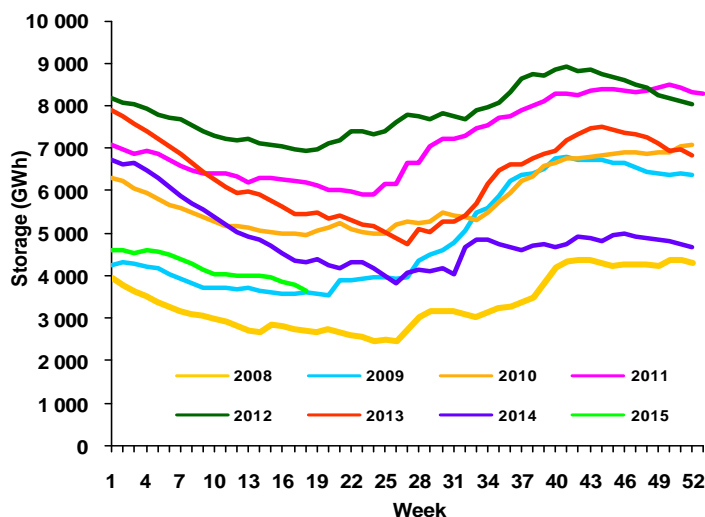
	System	NHW
Beginning of this week (GWh)	3649	178
Percentage full	25.2%	29.0%
Beginning of last week (GWh)	3750	200
Change from last week (GWh)	3% ↓	11% ↓
Compared to last year (GWh)	33% ↓	8% ↓

Generation

Hydro Generation (incl. exports)	180.07	GWh
Thermal Generation	0.43	GWh
Wind Generation	8.86	GWh

NHW - Northern Head Waters

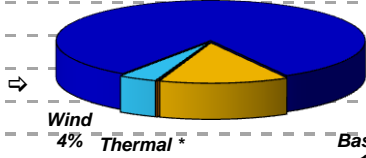
Sources: Hydro Tasmania/NEM-Review™



Fact Sheet

Compiled using information from NEM-Review™ and AEMO published data

Market Price		This week	Last week	Change	
Average Price (Volume weighted)	\$/MWh	42.70	41.18	Down by	3.7%
Median Price	\$/MWh	37.62	37.19	Up by	1.2%
Maximum Price	\$/MWh	1009.16	137.79		
Minimum Price	\$/MWh	-137.27	32.05		
% of intervals price was below \$50/MWh	%	77.4%	69.6%		
Recorded max weekly Avg since 29.4.06	\$/MWh	● 406.10	Week 25/09		
Recorded min weekly Avg since 29.4.06	\$/MWh	● 0.46	Week 6/10		

Demand		Occurrence	
Maximum Demand during the week	MW	1430	30 April 2015 8:00 AM
Minimum Demand during the week	MW	895	26 April 2015 3:00 AM
Average Demand during the week	MW	1144	
Weekly System Load Factor (LF)	%	79.97%	
Autumn Average LF (Mar 14 – May 14)	%	73.40%	
Weekly Energy Demand	GWh	205.46	
(Basslink + Thermal) Share	%	13.71%	
			
Recorded maximum peak for 2014	MW	1508	20 April 2015
Recorded maximum peak to date	MW	1760	11 August 2008
* represents output from TVPS			

Basslink		Export	Import	Net/Total	
Total Export/Import	GWh	11.13	27.85	Net Import	16.71
Max flow during export/import	MW	460	478		
Inter-regional revenue generated*	\$1000s	96.82	408.89		505.71
Max +ve price differential observed	\$/MWh	642.71	51.93		
Max -ve price differential observed	\$/MWh	-969.96	-11.10		
No of intervals of counter price flow		8	45		
% time of counter price flow	%	2.38%	13.4%		15.8%
No-go zone flows (% of total MWh flows)	%	1.04%	0.56%		0.69%

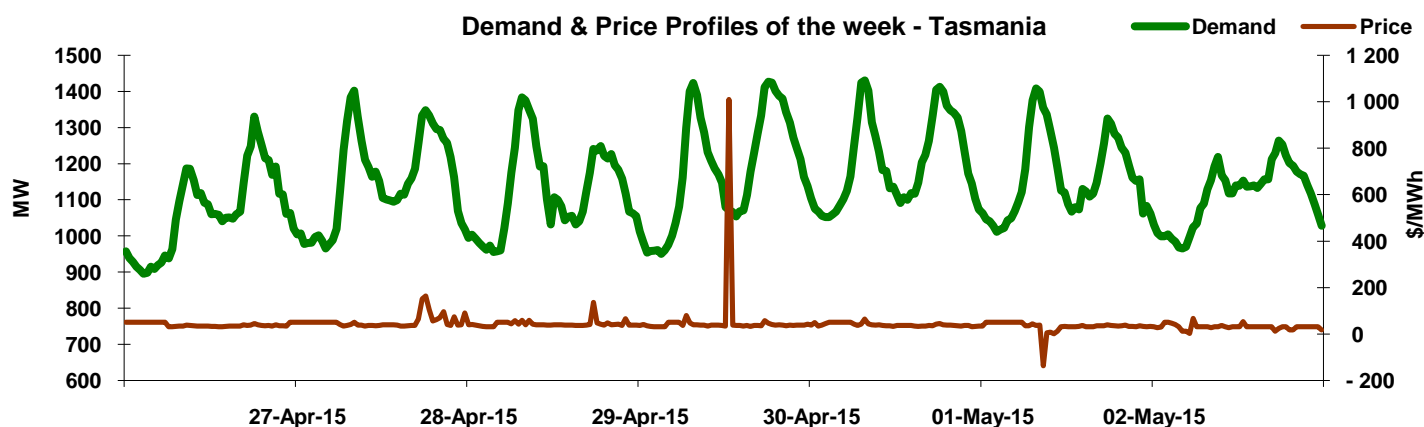
FCAS Costs		Tasmania	Mainland	Total NEM
Total FCAS costs	\$1000s	41.14	522.15	563.29
% of Total Energy Costs	%	0.50%	0.36%	0.37%
Cost of Lower Services	\$1000s	3.09	135.43	138.52
% of Total Energy Costs	%	0.04%	0.09%	0.09%
Cost of Raise Services	\$1000s	38.05	386.72	424.77
% of Total Energy Costs	%	0.46%	0.27%	0.28%

* Losses in the link are not considered in the calculation of residues.

Price Spikes in Tasmania (when price was > 3 x Weekly Average)

Weekly Average = \$42.70/MWh

Reasons/Comments
The spot price in Tasmania reached more than three times the weekly average on 4 occasions during the week.

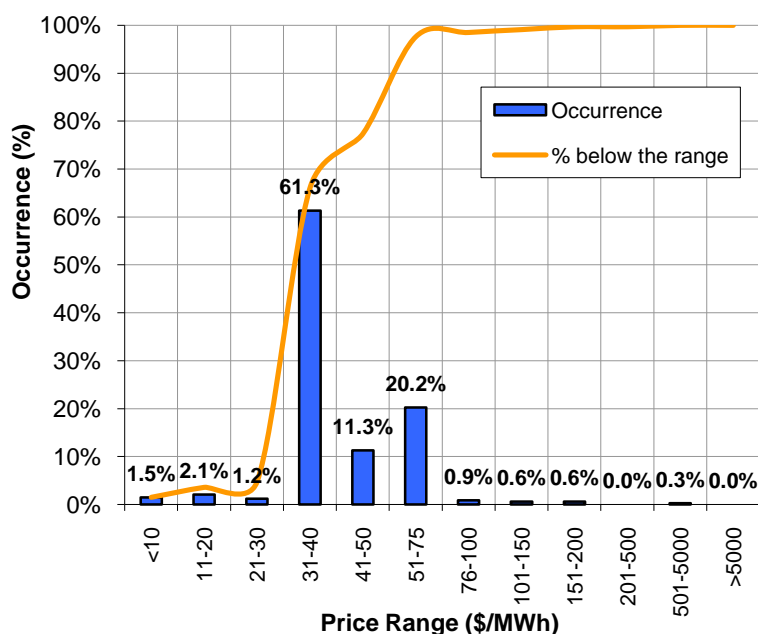


Other Market News and Trends

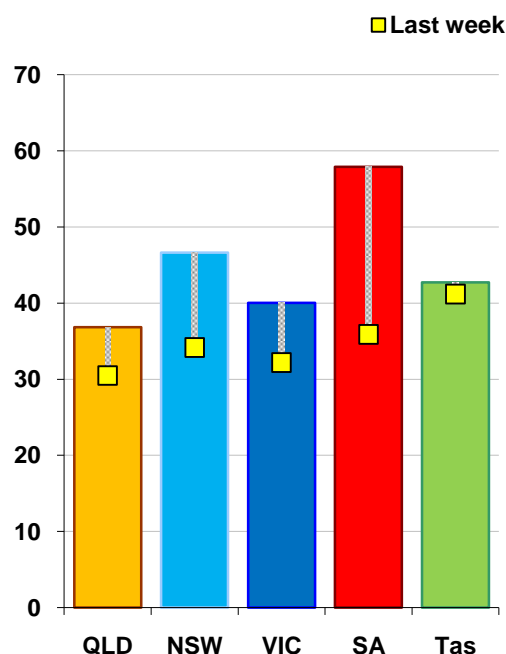
Compared to last week, average spot prices for the week increased in Queensland, South Australia, New South Wales, Tasmania and Victoria. Spot prices averaged between \$57.89/MWh in South Australia and \$36.83/MWh in Queensland. Most Tasmanian prices fell in the \$31 to \$40/MWh range.

Turnover in the energy market was \$153.28 million (turnover in the Tasmanian region was \$8.20 million). The total cost of ancillary services for the week was \$563 292 or 0.37% of energy market turnover. Tasmanian contribution to total FCAS costs was 7%.

Price Distribution within the week (Tasmania)



Weekly Average prices in the NEM (\$/MWh)

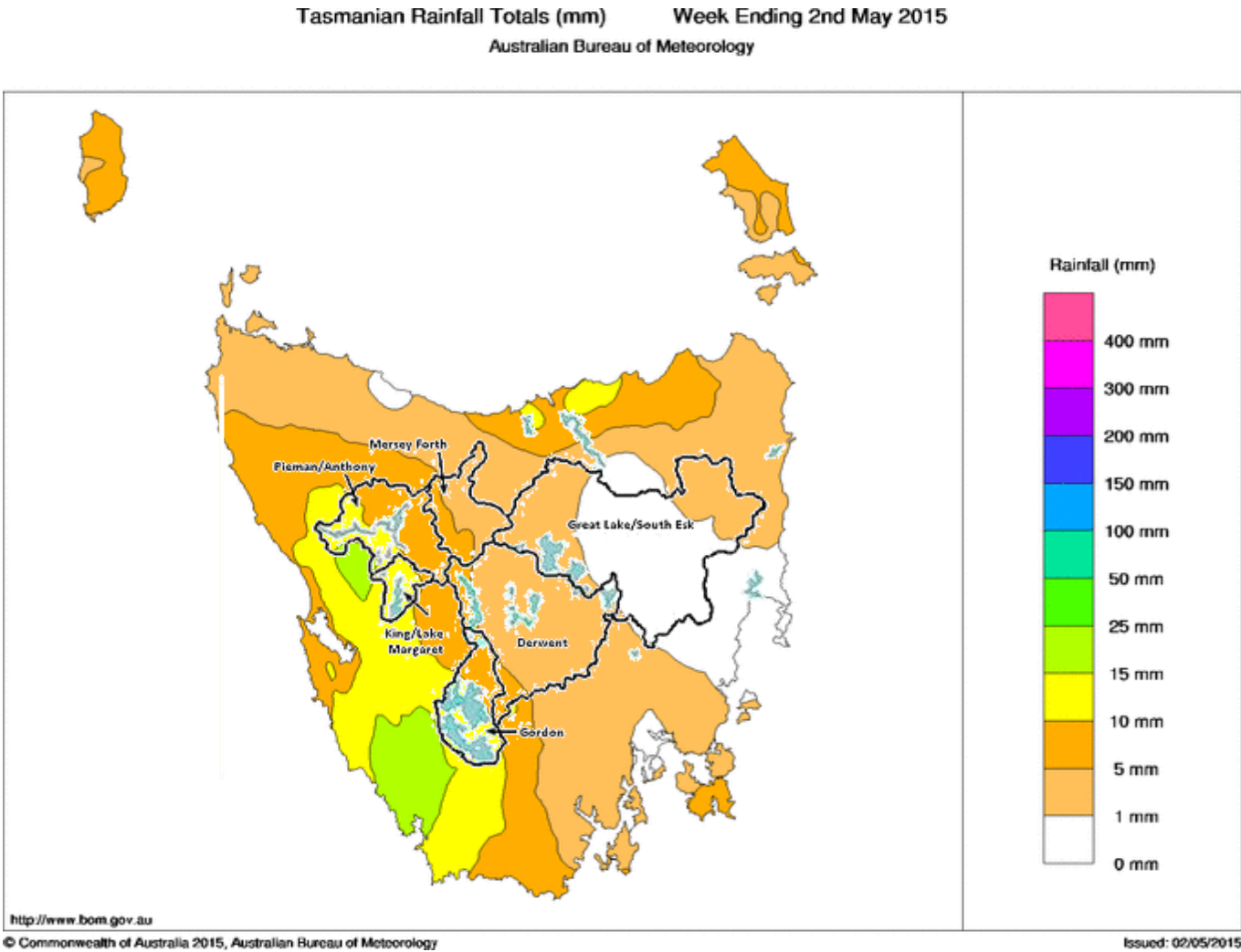


📺 Market snapshot

On Wednesday 29 April 2015 Tasmania spot price reached \$1,009.16/MWh for trading interval (TI) ending 1300 hrs. The Tasmanian 5 minute energy price reached \$5,868.29/MWh for DI ending 1250 hrs due to Hydro Tasmanian rebidding 291 MW of Gordon and Reece generation capacity at higher prices. Cheaper generation was not available due to power station ramp-up rates and FCAS profiles and low wind generation. Tasmania energy price reduced to \$40.63/MWh for DI ending 1255 hrs when demand reduced and 97 MW of generation capacity was rebid at lower prices. For more information refer to AEMO's price event reports for April 2015.

Tasmanian rainfall for the week

Map showing rainfall (mm) for the week over Hydro catchment areas.

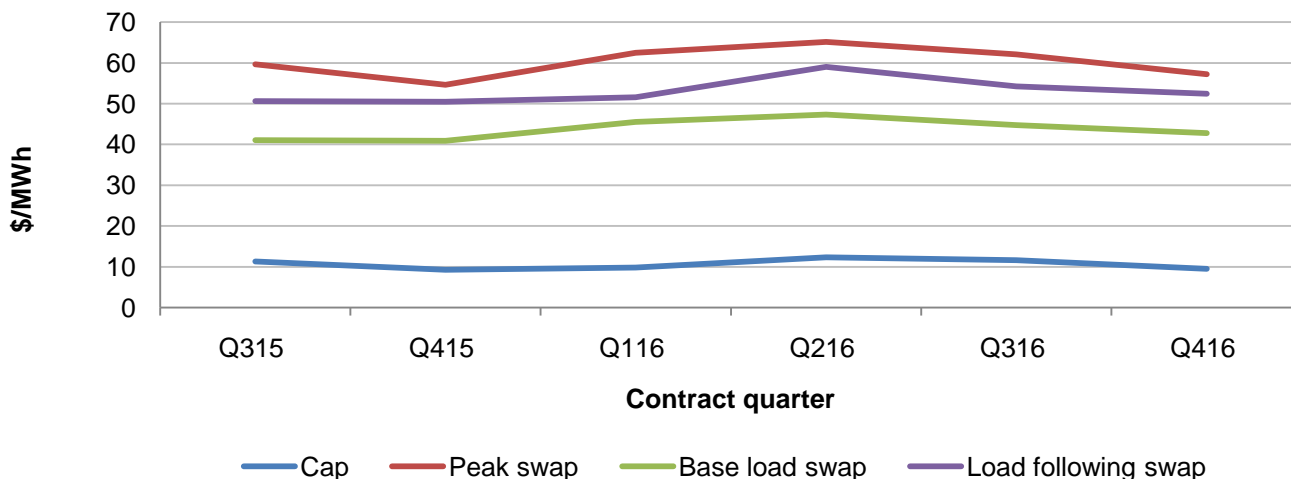


Wholesale Electricity Market Contract Regulation

Under clause 17(e) of the *Wholesale Contract Regulatory Instrument* Hydro Tasmania was not required to make a regulated offer over the Christmas period.

To help you understand the information in this section refer to the Regulator's **Wholesale Pricing** page available [here](#).

Approved financial contract offer prices for 28 April 2015



Traffic Light Indicators

The traffic light indicators advise market participants of the remaining availability of regulated contracts in each of the eight forward quarters in which Hydro Tasmania is required to offer regulated contracts.

Traffic light indicators as at 28 April 2015

	Capacity	Energy	Active Contract Quarter
Q315	Red	Red	yes
Q415	Red	Yellow	yes
Q116	Yellow	Yellow	yes
Q216	Red	Yellow	yes
Q316	Green	Green	yes
Q416	Green	Green	yes
Q117	Green	Green	yes
Q217	Green	Green	yes

key:

Green	Significant head room (>130MW of capacity, >200GWh of energy) still available
Yellow	Limited head room (0-130MW of capacity, 0-200GWh of energy) available
Red	No head room available

Disclaimer: Although this report has been prepared in good faith using information and reports publicly available from web sites and other sources, the Office of the Tasmanian Economic Regulator assumes no liability as to the reliability and accuracy of the information provided. Readers should refer to the 'Guide to reading Market Watch' for definitions of terms and an overview of the data and charts used in this weekly bulletin..