

Enquiries to: James McIlhenny  
☎: 62382891  
✉: mcilhennyj@hobartcity.com.au  
Our Ref: 16-29-1 folio 13641  
jmc:HCC  
(p:\planning\james\energy regulator letter.doc)  
Your Ref: REG297 AJR/AR

14 November 2006

Mr Peter Stolp  
Joint Working Group Chair  
Office of the Tasmanian Energy Regulator  
GPO Box 770  
Hobart Tas 7001

Dear Mr Stolp

## DISTRIBUTION NETWORK PERFORMANCE STANDARDS

I refer to your letter of 3 November 2006 inviting comment on the proposed Distribution Network Performance Standards.

In relation to the City of Hobart the proposed standards seem appropriate as do the proposed area boundaries around Hobart with the following exceptions:

- Fern Tree and Ridgeway are proposed to be included in the 'Higher Density Rural' category when the energy consumption density in those areas is the same as other urban areas.
- The 'High Density Commercial' area around the Hobart CBD stops at Melville Street, it would be more consistent if it covered all of the Central Service and Central Commercial & Administrative zones as shown on the enclosed plan.
- All residential properties in Battery Point north of Hampden Road are included in the 'High Density Commercial' area, they should really be in the urban area.

Thank you for the opportunity to comment on the proposals and should you require any further information please do not hesitate to contact James McIlhenny on 62382891.

Yours faithfully

(Neil Noye)

**DIRECTOR DEVELOPMENT AND ENVIRONMENTAL SERVICES**





# CITY OF HOBART PLANNING SCHEME 1982

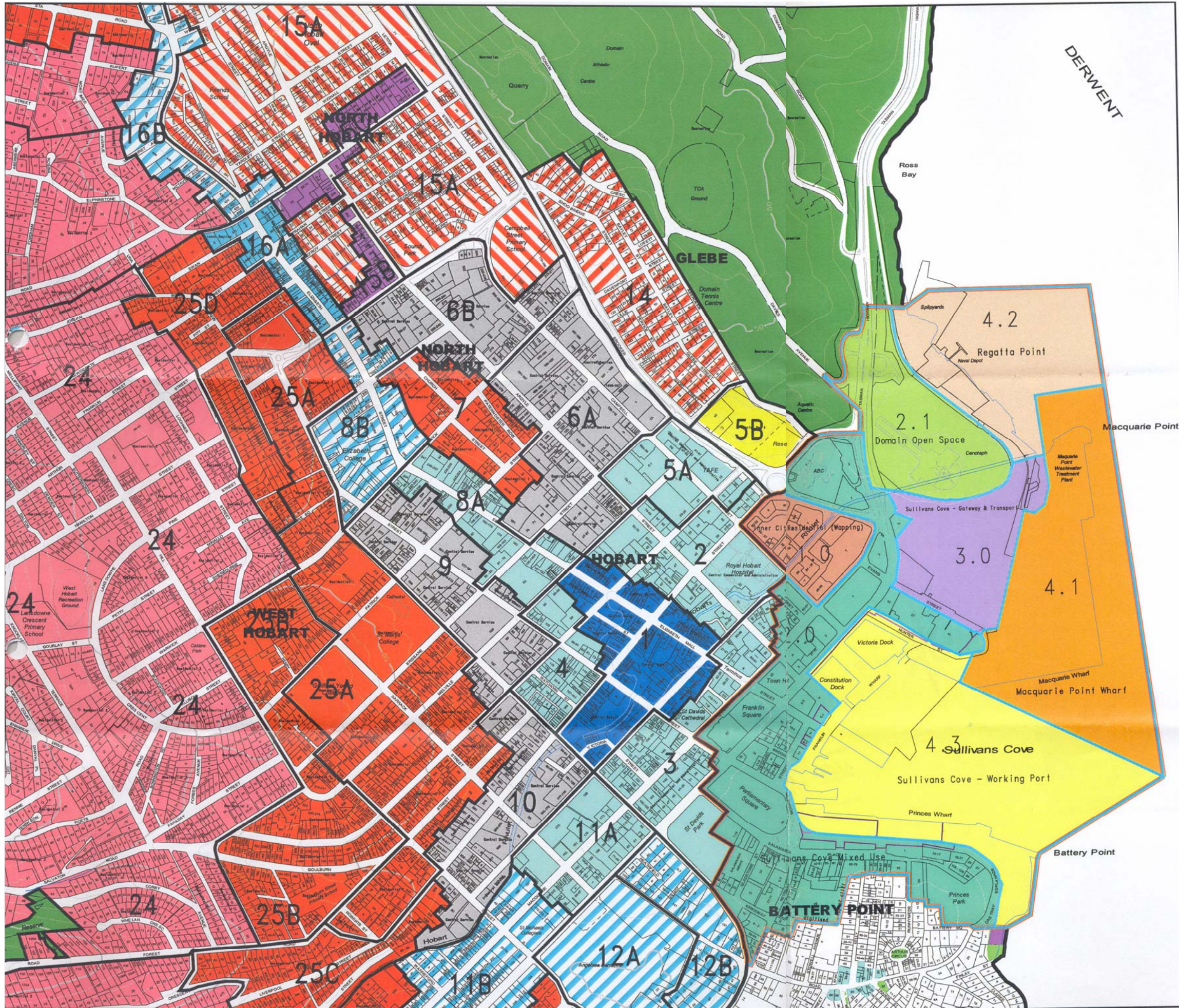
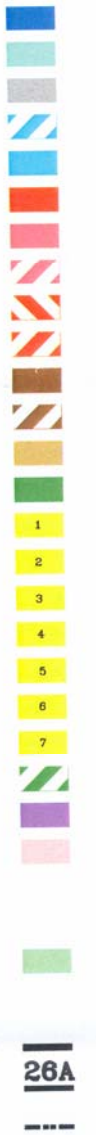
## LEGEND

### Zones

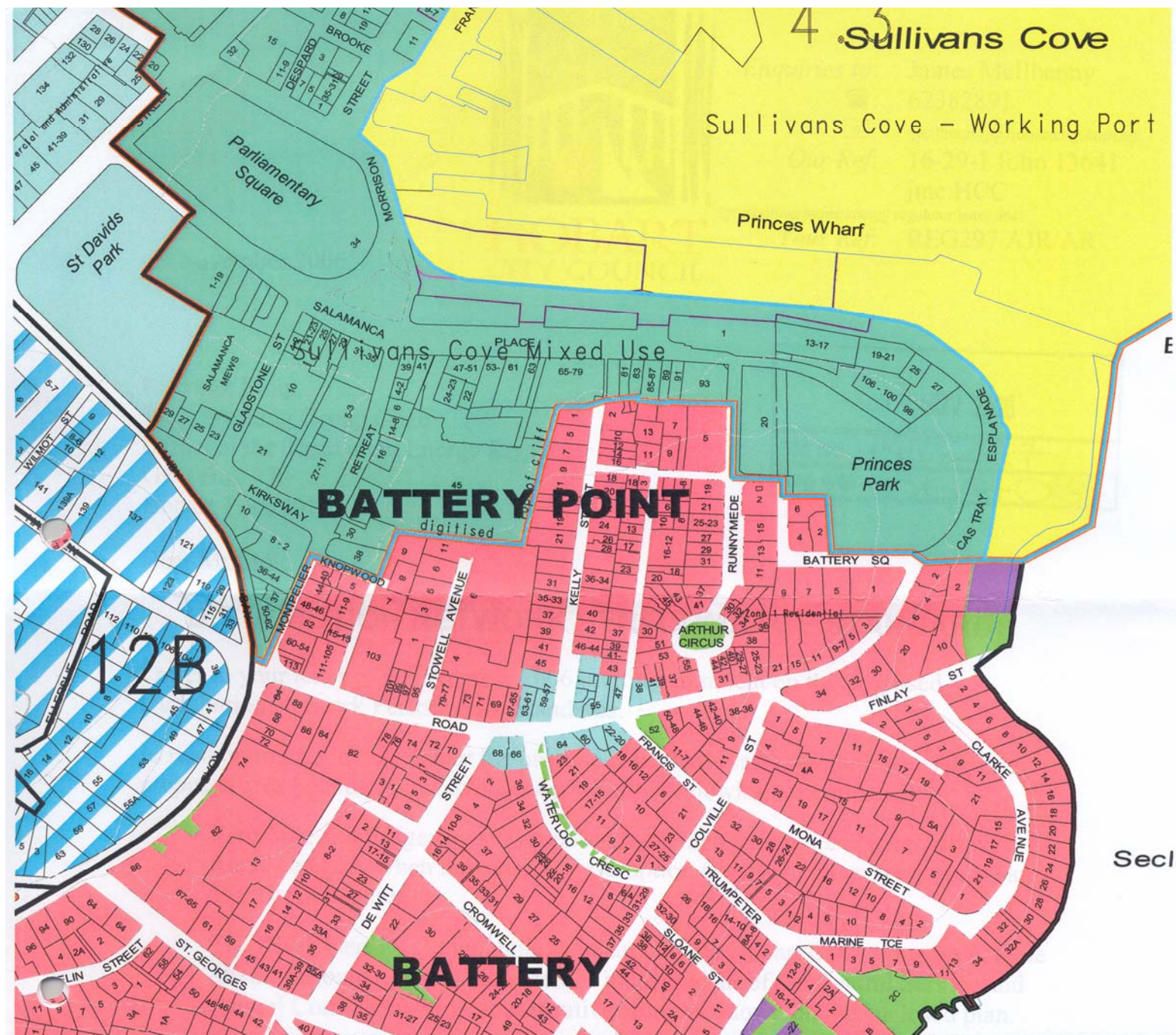
- 1. Central Retail
- 2. Central Commercial & Administrative
- 3. Central Service
- 4. Commercial & Residential
- 5. Local Service
- 6. Residential 1
- 7. Residential 2
- Reserved Residential Area
- 8. Residential 3
- 9. Residential 4
- 10. Rural A
- 11. Rural B
- 12. Rural C
- 13. Recreation
- 14. Special Use 1
- 15. Special Use 2
- 16. Special Use 3
- 17. Special Use 4
- 18. Special Use 5
- 19. Special Use 6
- 20. Special Use 7
- 21. Hills Face
- 22. Service and Light Industry
- 23. Low Density Residential
- 24.
- 25.
- 26. Landscape & Conservation

### Boundaries

- The Scheme
- Precinct Number & Boundary
- Mountain Park







14-11-2006

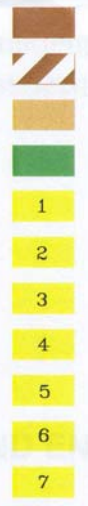
# CITY OF HOBART PLANNING SCHEME 1982

## Zones

- 1. Central Retail
- 2. Central Commercial & Administrative
- 3. Central Service
- 4. Commercial & Residential
- 5. Local Service
- 6. Residential 1
- 7. Residential 2
- Reserved Residential Area
- 8. Residential 3
- 9. Residential 4



- 10. Rural A
- 11. Rural B
- 12. Rural C
- 13. Recreation
- 14. Special Use 1
- 15. Special Use 2
- 16. Special Use 3
- 17. Special Use 4
- 18. Special Use 5
- 19. Special Use 6
- 20. Special Use 7

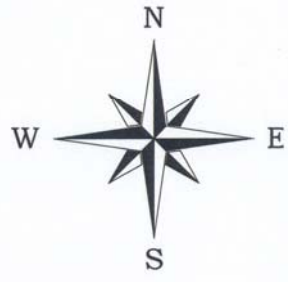


- 21. Hills Face
- 22. Service and Light Industry
- 23. Low Density Residential
- 24.
- 25.
- 26. Landscape & Conservation



## Boundaries

- The Scheme
- Precinct Number & Boundary
- Mountain Park



SCALE 1:5000

