



TASMANIAN ENERGY SECURITY

Monitor and Assessor

Monthly Dashboard



November 2019 edition

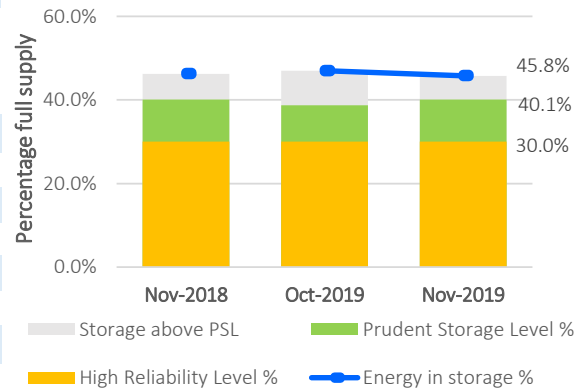
Report on energy in storage levels and energy security assessment for mainland Tasmania as at 4 November 2019

Status

Energy in storage is well above the Prudent Storage Level
 Energy in storage is equivalent to 7.7 months average seasonal demand[^]
 Risk response: Normal - commercial operation of Hydro Tasmania generation.
 Hydro Tasmania reports that storages remain above the High Reliability Level over the next 90 days in all of its simulated inflow sequences.

Energy security assessment:
 no additional monitoring activities required

Energy in storage - status



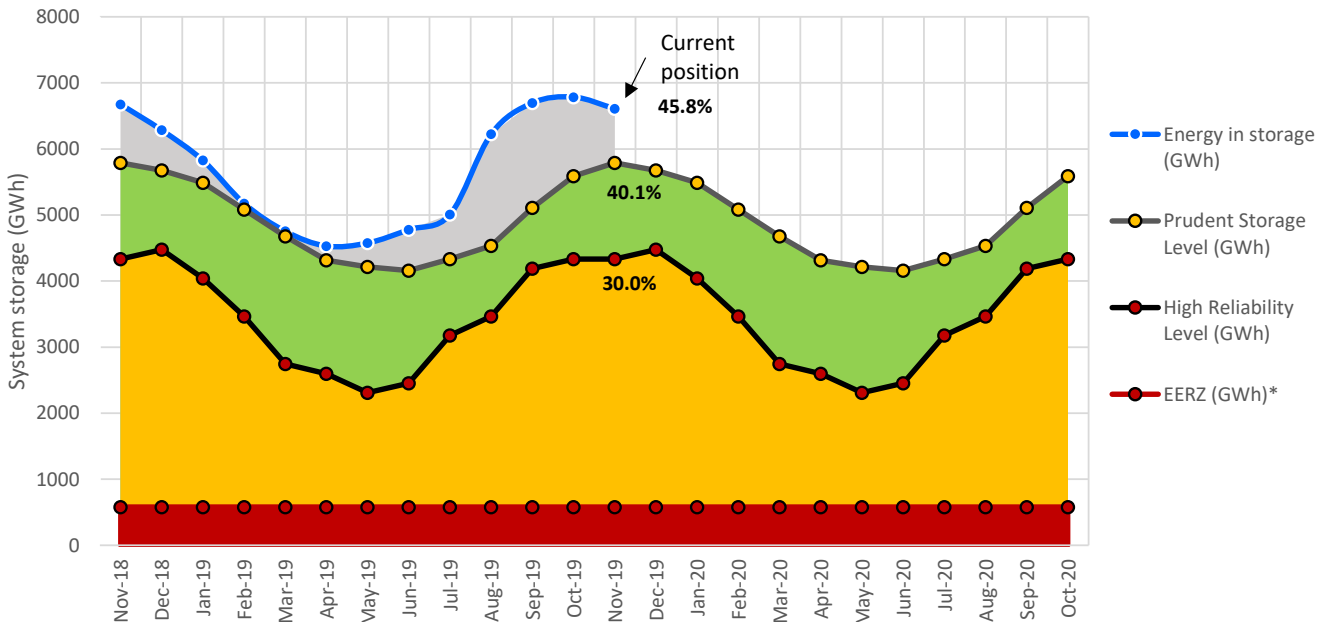
Energy in storage (EIS)

	System	PSL	HRL
As at 4 November 2019 (GWh)	6609	5789	4331
Percentage full supply	45.8%	40.1%	30.0%
Total October inflows [~] (GWh)	350		

As at 7 October 2019 (GWh)	6785
Change from last month (GWh)	-2.6%
Compared to November last year	-1.0%

System (14437 GWh) - excludes Lake Gairdner, Lake Margaret & Lake Plimsoll

Energy in storage (mainland Tasmania) - November 2018 to November 2019



[^]Average seasonal demand for the energy in storage equivalent is approximately 861 GWh per month.

[~]Inflows for the calendar month.

*System storage associated with Great Lake Environmental Extreme Risk Zone (EERZ).

HRL = High Reliability Level (threshold to which reserve water is held for energy security purposes, where the reserve is sufficient to withstand a six month Basslink outage coinciding with a very low inflow sequence, and avoid extreme environmental risk for Great Lake).

PSL = Prudent Storage Level (additional storage to result in a low likelihood of entering the HRL under normal operating conditions).

EIS = Energy in storage (the volume of water available for electricity generation in Hydro Tasmania's dams as a % of full supply).

October statistics

Mainland Tasmanian generation during October 2019

Tasmanian monthly demand 820.3 GWh

Renewable generation

Hydro generation 575.0 GWh

Wind generation 94.3 GWh

Tamar Valley Power Station

Operational

TVPS generation 20.6 GWh

Basslink interconnector

Operational

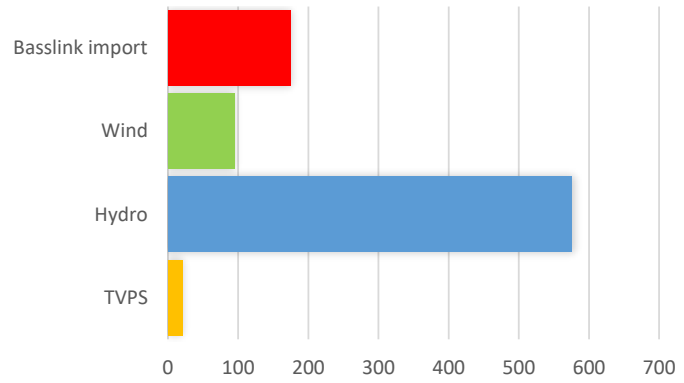
Basslink imports 174.8 GWh

Basslink exports 44.4 GWh

Basslink net imports 130.4 GWh

Hydro generation provided the majority of all electricity required to meet mainland Tasmanian demand during October 2019. This was supplemented mainly by Basslink and wind.

Monthly generation mix (GWh)



Energy security outlook

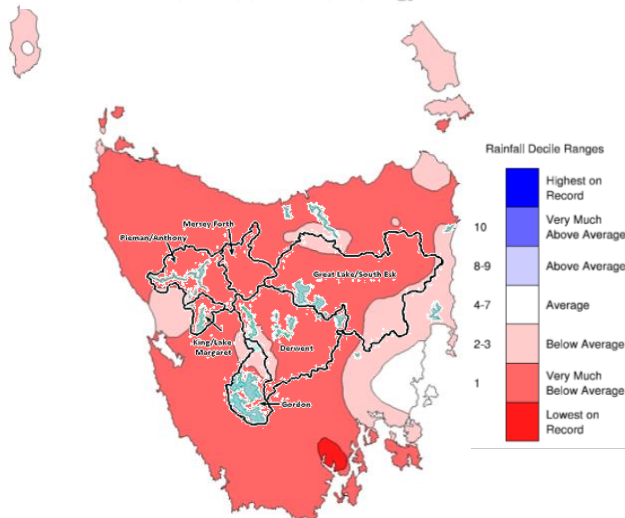
Rainfall in Tasmania - October

The Bureau of Meteorology's monthly climate summary notes that Tasmania's total rainfall for the month was less than half the October average. Only a patch of the lower East Coast had close to average rainfall for the month. Rainfall for the year so far has been below average in most of Tasmania and well below average in the east, but close to average in the western highlands. The map below shows rainfall deciles for the month, including for Hydro Tasmania's storage catchments.

Three month forecast

The Bureau of Meteorology's three month climate outlook for November 2019 to January 2020, issued on 31 October 2019, shows that there is a probability of less than 50 per cent of above median rainfall across the east of the state and a probability of greater than 50 per cent of above median rainfall for the far west of the state.

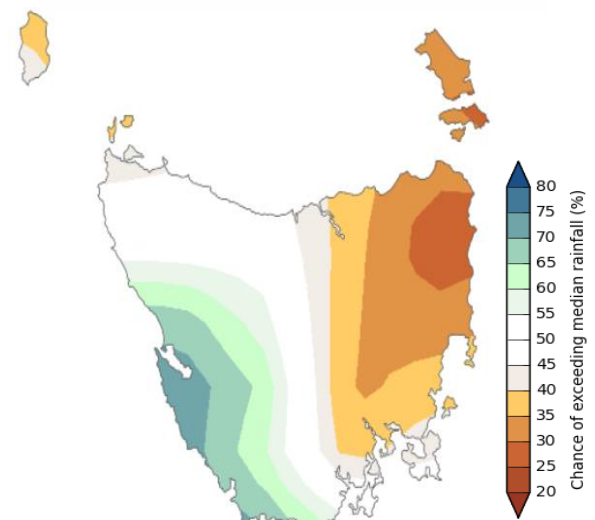
Tasmanian Rainfall Deciles October 2019
Distribution Based on Gridded Data
Australian Bureau of Meteorology



© Commonwealth of Australia 2019, Australian Bureau of Meteorology ID code: AWAP

Source: Bureau of Meteorology, Monthly Climate Summary for Tasmania (link).

Chance of exceeding the median rainfall for November 2019 to January 2020



© Commonwealth of Australia 2019, Australian Bureau of Meteorology Model: ACCESS-S1 Base period: 1990-2012

Source: Bureau of Meteorology, Monthly Climate Outlook (link).

Disclaimer: This report has been prepared in good faith using information sourced from NEM Review™ and the Australian Bureau of Meteorology, with additional data provided by Hydro Tasmania. The Office of the Tasmanian Economic Regulator assumes no liability as to the reliability and accuracy of the information provided.