



TASMANIAN ENERGY SECURITY

Monitor and Assessor

Monthly Dashboard



March 2019 edition

Report addresses energy security status as at 4 March 2019

Status

Energy in storage is slightly above the Prudent Storage Level
 Energy in storage is equivalent to 5.3 months average demand*
 Risk response [^]: Normal - commercial operation of Hydro Tasmania generation.
 Hydro Tasmania reports that storages remain above the High Reliability Level over the next 90 days in all of its simulated inflow sequences.

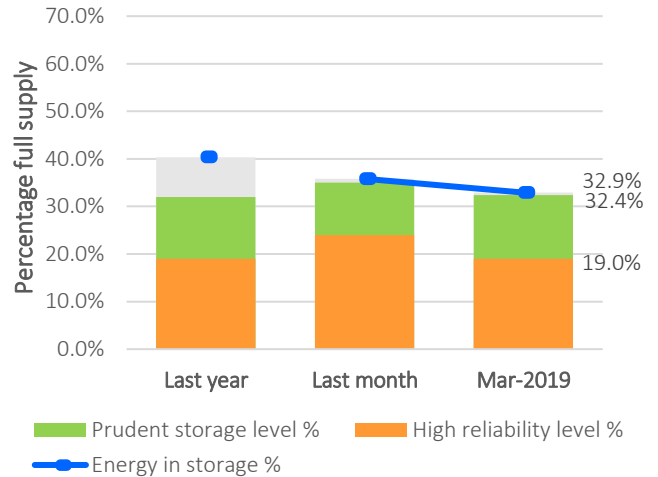
Energy security assessment:
 No additional monitoring activities required

Energy in storage

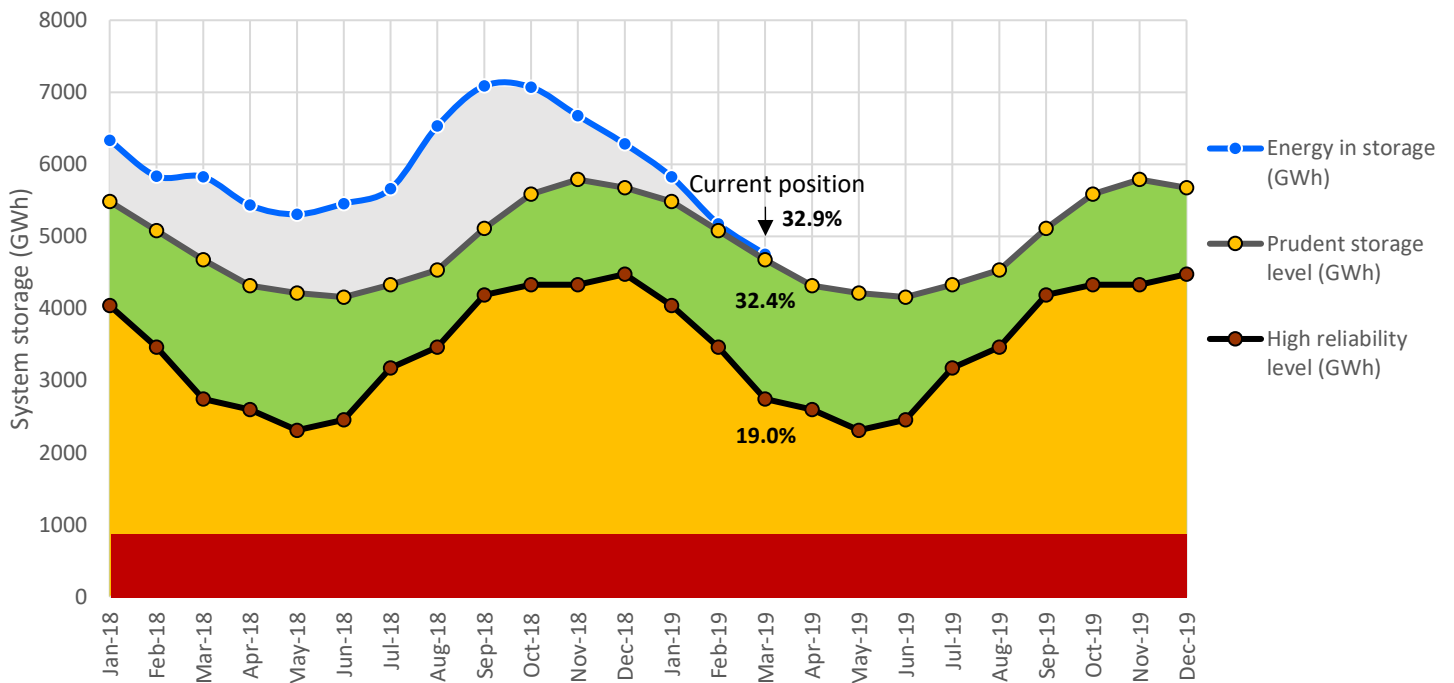
	System	PSL	HRL
Beginning of this month (GWh)	4753	4678	2743
Percentage full supply	32.9%	32.4%	19.0%
Total February inflows (GWh)	129		
Beginning of last month (GWh)	5175		
Change from last month (GWh)	-8.2%	↓	
Compared to last year (GWh)	-18%	↓	

System (14437 GWh) - excludes Lake Gardiner, Lake Margaret & Lake Plimsol

Energy in storage - status



Energy in storage - 24 month



*Average monthly demand is 900 GWh. Demand in summer months is generally below average. Demand in winter months is generally above average.

[^] Energy security risk response framework, Tasmanian Energy Security Taskforce Final Report, August 2017. (click for link)

HRL = High Reliability Level (threshold to which reserve water is held for energy security purposes, where the reserve is sufficient to withstand a six month Basslink outage coinciding with a very low inflow sequence, and avoid extreme environmental risk in Great Lake).

PSL = Prudent Storage Level (additional storage to reduce the likelihood of entering the HRL under normal operating conditions).

EIS = Energy In Storage (the volume of water in Hydro Tasmania's dams as a % of full supply).

February statistics

Tasmanian generation during February 2019

Tasmanian monthly demand 738.8 GWh

Renewable generation

Hydro generation 392.0 GWh

Wind generation 101.8 GWh

Tamar Valley Power Station

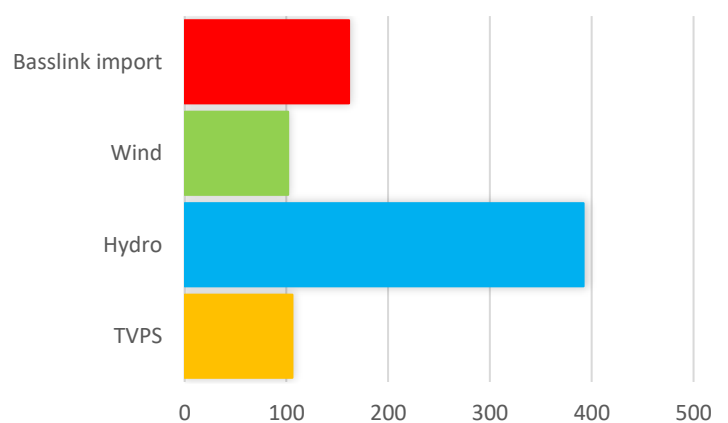
Operational
TVPS generation 106.0 GWh

Basslink interconnector

Operational
Basslink import 161.6 GWh

Basslink export 22.6 GWh

Monthly generation mix (GWh)

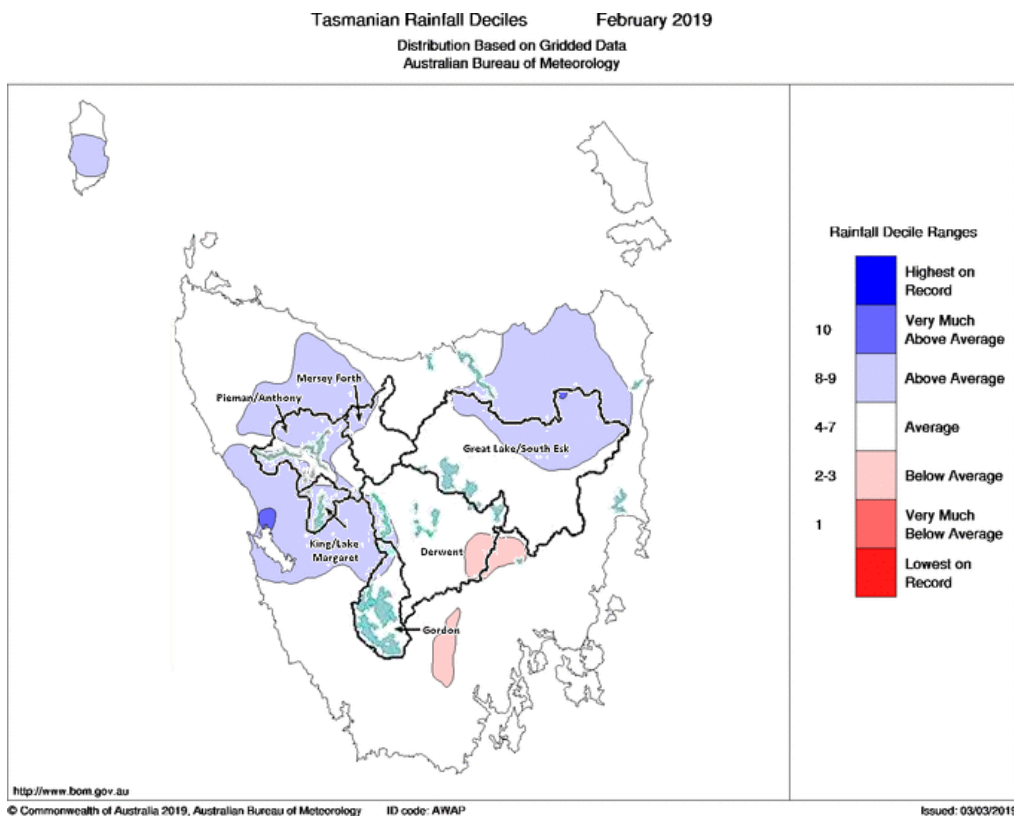


Hydro generation provided just over half of all energy required to meet Tasmanian demand during February. This was supplemented by Basslink, TVPS and wind.

Energy security outlook

Rainfall in Tasmania - February

The Bureau of Meteorology's monthly climate summary notes that February rainfall was above average in many areas in the west and northeast of the State, while rainfall was below average in much of the southeast. Tasmania's total rainfall was 18 per cent above average. The map below shows rainfall deciles for the month in relation to Hydro Tasmania's storage catchments.



Source: Bureau of Meteorology, Monthly Climate Summary for Tasmania (link).

Three month forecast

The Bureau of Meteorology's three month climate outlook for March to May 2019, issued 28 February 2019, shows that drier than average conditions are likely for northern and eastern Tasmania.

Source: Bureau of Meteorology, Monthly Climate Outlook (link).

Disclaimer: This report has been prepared in good faith using information sourced from NEM Review™ and the Australian Bureau of Meteorology, with additional data provided by Hydro Tasmania. The Office of the Tasmanian Economic Regulator assumes no liability as to the reliability and accuracy of the information provided.