



TASMANIAN ENERGY SECURITY

Monitor and Assessor

Monthly Dashboard



February 2019 edition

Report addresses energy security status as at beginning February 2019

Status

Energy in storage is slightly above Prudent Storage Level
 Energy in storage equivalent to 5.7 months average demand*
 Risk response ^: Normal. Commercial operation of Hydro Tasmania generation
 Hydro Tasmania reports that storages remain above the High Reliability Level over the next 90 days in all of its simulated inflow sequences.

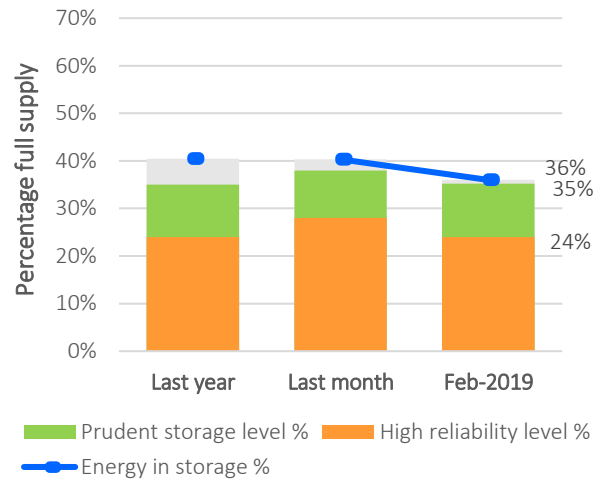
Energy security assessment:
 No additional monitoring activities required

Energy in storage

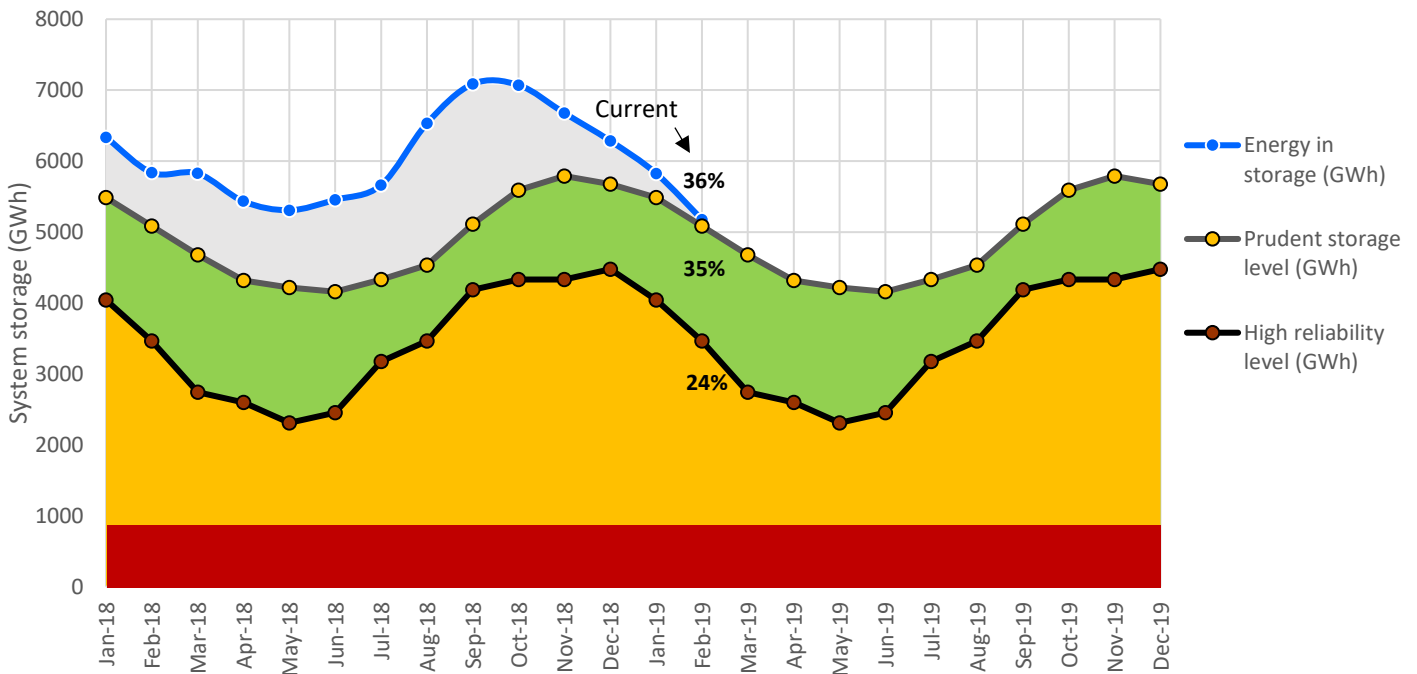
	System	PSL	HRL
Beginning of this month (GWh)	5175	5082	3465
Percentage full supply	35.8%	35%	24%
Total January inflows (GWh)	-91		
Beginning of last month (GWh)	5826		
Change from last month (GWh)	-11.2%	↓	
Compared to last year (GWh)	-11%	↓	

System (14437 GWh) - excludes Lake Gardiner, Lake Margaret & Lake Plimsol

Energy in storage - February



Energy in storage - 24 month



*Average monthly demand is 900 GWh. Demand in summer months is generally below average. Demand in winter months is generally above average.

^ Energy security risk response framework, Tasmanian Energy Security Taskforce Final Report, August 2017. (click for link)

HRL = High Reliability Level (minimum threshold, sufficient to meet Tasmanian demand for six months).

PSL = Prudent Storage Level (additional storage to reduce the likelihood of entering the HRL under normal operating conditions).

EIS = Energy In Storage (the volume of water in Hydro Tasmania's dams as a % of full supply).

January statistics

Tasmanian generation during January

Tasmanian monthly demand 855.0 GWh

Renewable generation

Hydro generation 636.3 GWh

Wind generation 88.7 GWh

Tamar Valley Power Station

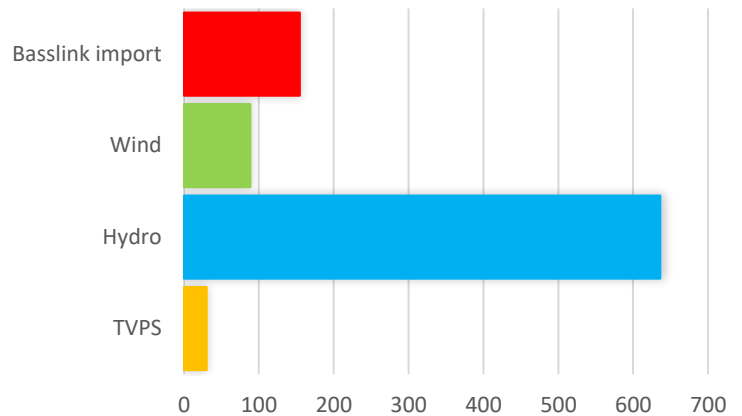
Operational
TVPS generation 30.4 GWh

Basslink interconnector

Operational
Basslink import 154.8 GWh

Basslink export 55.2 GWh

Monthly generation mix (GWh)

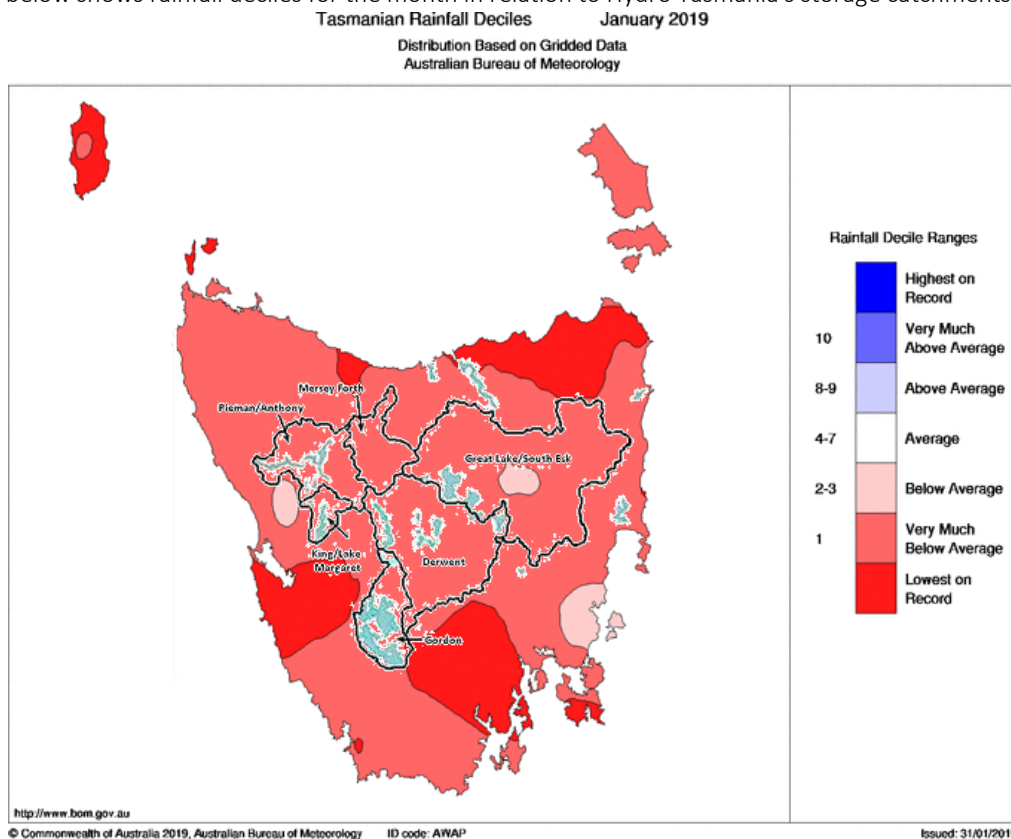


Hydro generation, supplemented by wind, provided nearly all energy required to meet Tasmanian demand during January. TVPS and Basslink provided additional energy as required.

Energy security outlook

Rainfall in Tasmania - January

The Bureau of Meteorology's monthly climate summary notes that total January rainfall was the lowest on record in several areas of the State, while rainfall was below average, or very much below average, for most of Tasmania with the State's total rainfall about 20 per cent of average. The map below shows rainfall deciles for the month in relation to Hydro Tasmania's storage catchments.



Source: Bureau of Meteorology, Monthly Climate Summary for Tasmania (link).

Three month forecast

The Bureau of Meteorology's three month climate outlook for February to April 2019, issued 31 January 2019, shows no strong tendency towards a significantly wetter or drier than average season ahead.

Source: Bureau of Meteorology, Monthly Climate Outlook (link).

Disclaimer: This report has been prepared in good faith using information sourced from NEM Review™ and the Australian Bureau of Meteorology, with additional data provided by Hydro Tasmania. The Office of the Tasmanian Economic Regulator assumes no liability as to the reliability and accuracy of the information provided.