



TASMANIAN ENERGY SECURITY Monitor and Assessor



Monthly Dashboard

December 2018 edition

Report addresses energy security status as at the beginning of December 2018

Status

Energy in storage is above Prudent Storage Level

Energy in storage equivalent to 7.0 months average demand*

Risk response [^]: Normal. Commercial operation of Hydro Tasmania generation
Hydro Tasmania reports that storages remain above the High Reliability Level over the next 90 days in all of its simulated inflow sequences.

Energy security assessment:

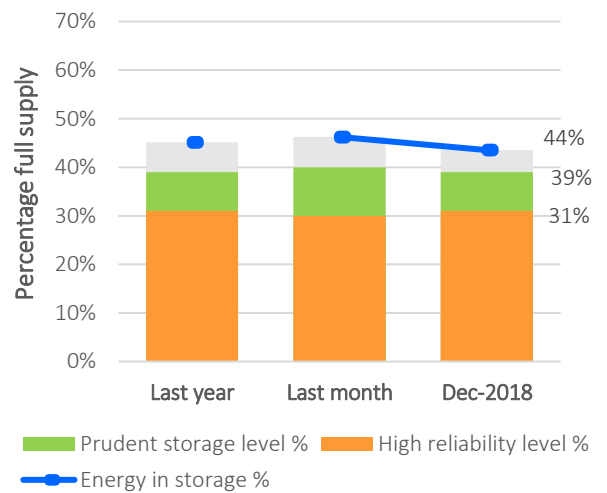
No additional monitoring activities required

Energy in storage

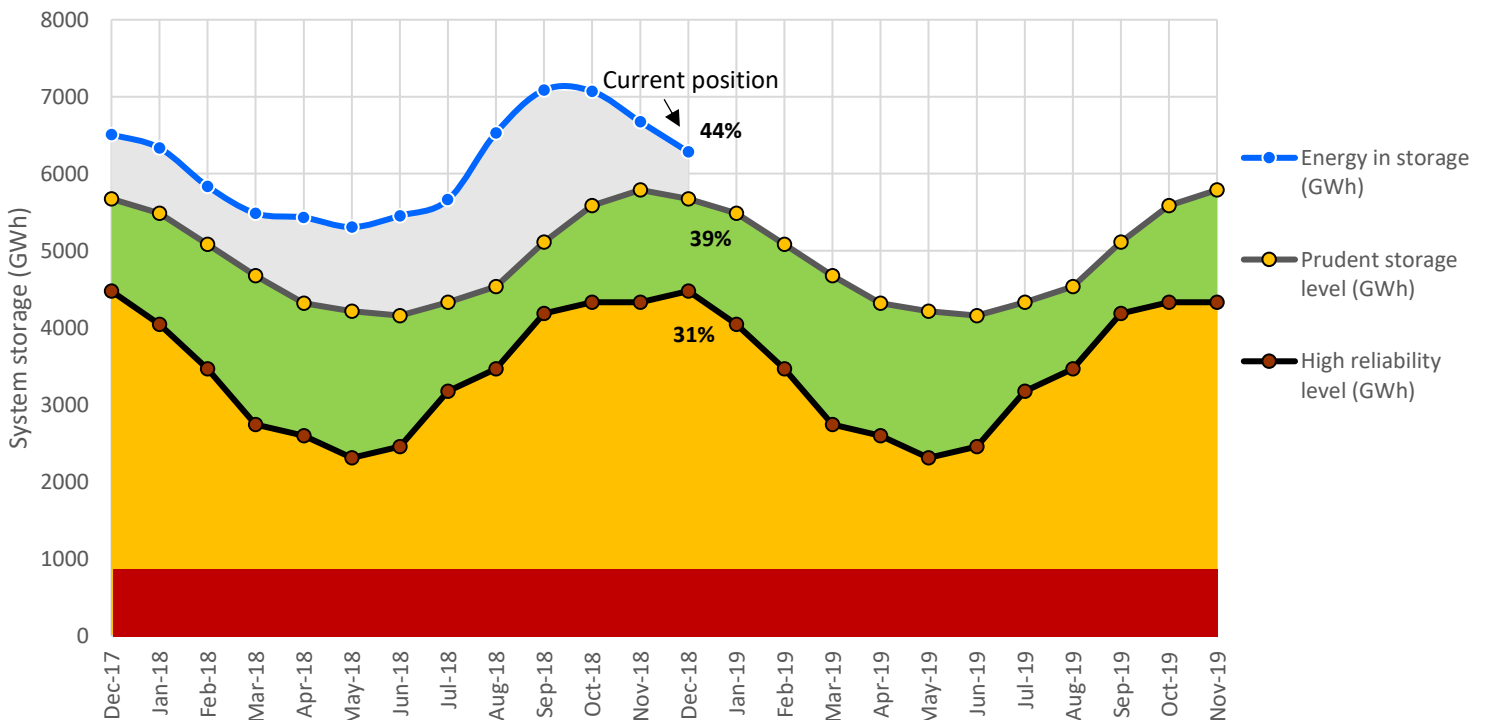
	System	PSL	HRL
Beginning of this month (GWh)	6284	5630	4475
Percentage full supply	43.5%	39%	31%
Total November inflows (GWh)	476		
Beginning of last month (GWh)	6676		
Change from last month (GWh)	-5.9%	↓	
Compared to last year (GWh)	-3%	↓	

System (14437 GWh) - excludes Lake Gardiner, Lake Margaret & Lake Plimsol

Energy in storage - status



Energy in storage - 24 month



*Average monthly demand is 900 GWh. Demand in summer months is generally below average. Demand in winter months is generally above average.

[^] Energy security risk response framework, Tasmanian Energy Security Taskforce Final Report, August 2017. (click for link)

HRL = High Reliability Level (minimum threshold, sufficient to meet Tasmanian demand for six months).

PSL = Prudent Storage Level (additional storage to reduce the likelihood of entering the HRL under normal operating conditions).

EIS = Energy In Storage (the volume of water in Hydro Tasmania's dams as a % of full supply).

November statistics

Tasmanian generation during November

Tasmanian monthly demand 852.2 GWh

Renewable generation

Hydro generation 827.5 GWh

Wind generation 78.1 GWh

Tamar Valley Power Station

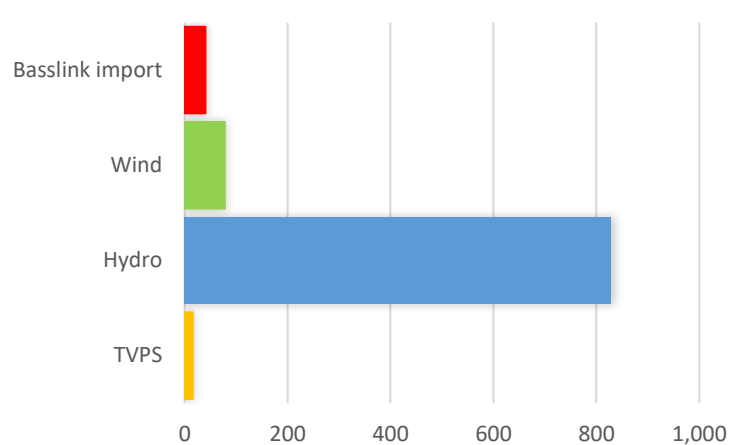
Operational
TVPS generation 15.9 GWh

Basslink interconnector

Operational
Basslink import 40.5 GWh

Basslink export 109.8 GWh

Monthly generation mix



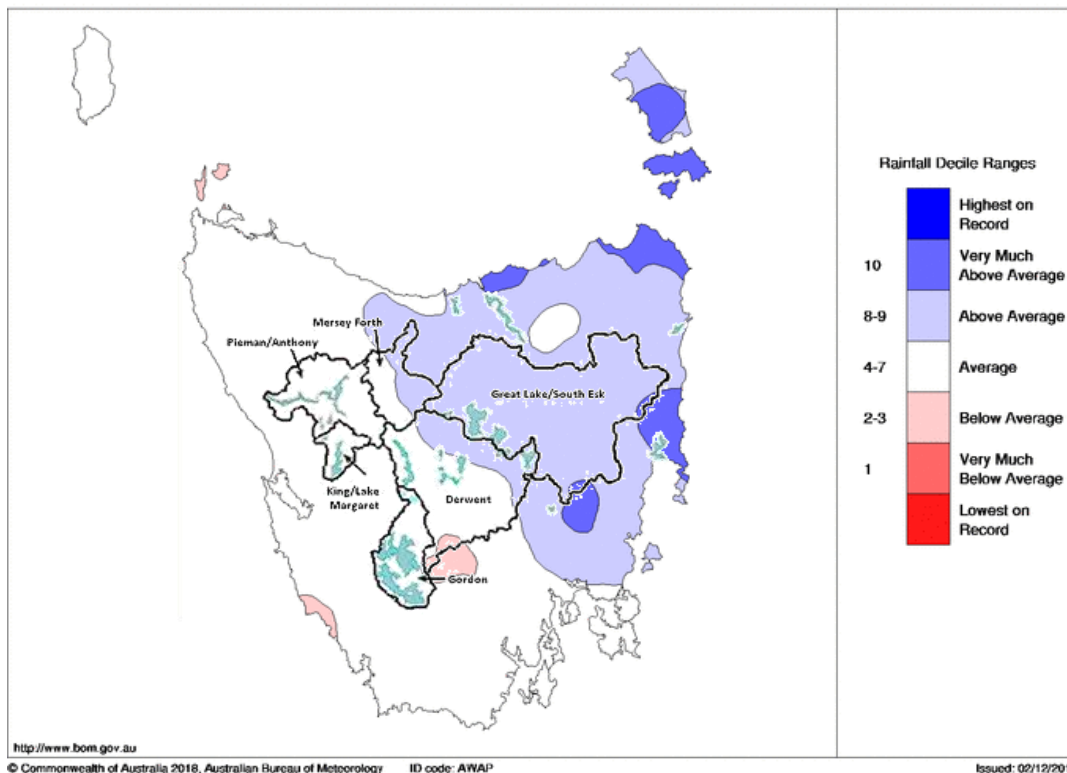
Hydro generation, supplemented by wind, provided nearly all energy required to meet Tasmanian demand during November. TVPS and Basslink provided additional energy as required.

Energy security outlook

Rainfall in Tasmania - November

The Bureau of Meteorology's monthly climate summary reports November rainfall totals were close to average for most of the western half of Tasmania and above average in the east and northeast, with some areas well above average. The map below shows rainfall deciles for the month in relation to Hydro's storage catchments.

Tasmanian Rainfall Deciles November 2018
Distribution Based on Gridded Data
Australian Bureau of Meteorology



Source: Bureau of Meteorology, Monthly Climate Summary for Tasmania (link).

Three month forecast

The Bureau of Meteorology's three month climate outlook for December 2018 to February 2019, issued 29 November 2018, shows no strong likelihood of either wetter or drier than average conditions.

Source: Bureau of Meteorology, Monthly Climate Outlook (link).

Disclaimer: This report has been prepared in good faith using information sourced from NEM Review™ and the Australian Bureau of Meteorology, with additional data provided by Hydro Tasmania. The Office of the Tasmanian Economic Regulator assumes no liability as to the reliability and accuracy of the information provided.