



TASMANIAN ENERGY SECURITY

MONITOR AND ASSESSOR

Monthly Dashboard



January 2024 edition

Report on energy in storage levels and energy security assessment for mainland Tasmania as at 1 January 2024.

Status

- Energy in storage is above the Prudent Storage Level.
- Energy in storage is equivalent to 7 months average seasonal demand.[^]
- Risk response: Normal - commercial operation of Hydro Tasmania generation.
- Hydro Tasmania reports that storages remain above the High Reliability Level over the next 120 days in all of its simulated inflow sequences.

Water storage situation

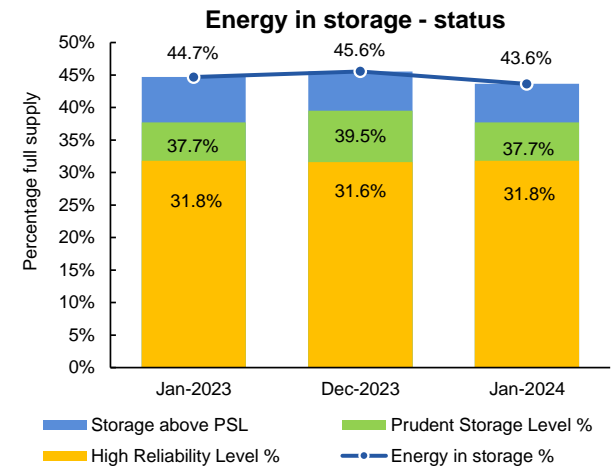
As at 1 January 2024 (GWh)	System	PSL	HRL
Energy in storage (EIS)	6 300	5 443	4 591
Percentage full supply [#]	43.6%	37.7%	31.8%
Total December yield [~] (GWh)	156		

Comparison

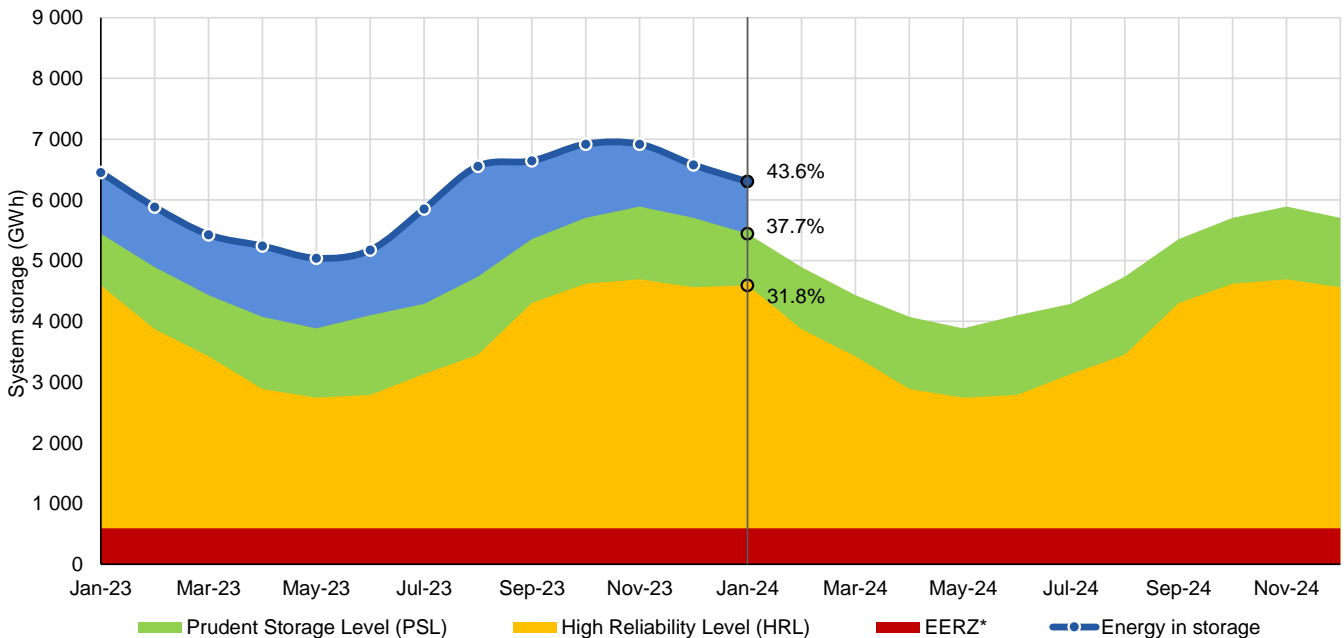
Previous month (as at 4 December 2023) (GWh)	6 576
Change from last month (GWh)	4.2% ↓
Change from January last year (GWh)	2.4% ↓

Energy security assessment

No additional monitoring activities required.



Energy in storage (mainland Tasmania) - January 2023 to January 2024



[^] Average seasonal demand for the energy in storage equivalent is approximately 896 GWh per month.

[#] Total system supply is 14 437 GWh (excludes Lake Gairdner, Lake Margaret and Lake Plimsoll).

[~] Inflows for the calendar month minus losses due to evaporation.

* System storage associated with Great Lake Environmental Extreme Risk Zone (EERZ).

HRL = High Reliability Level (threshold to which reserve water is held for energy security purposes, where the reserve is sufficient to withstand a six month Basslink outage coinciding with a very low inflow sequence, and avoid extreme environmental risk for Great Lake).

PSL = Prudent Storage Level (additional storage to result in a low likelihood of entering the HRL under normal operating conditions).

EIS = Energy in storage (the volume of water available for electricity generation in Hydro Tasmania's dams as a percentage of full supply).

December 2023 generation (mainland Tasmania)

Consumption

Tasmanian monthly consumption 853.3 GWh

Renewable generation

Hydro generation 480.2 GWh

Wind generation 120.2 GWh

Gas generation

Gas generation 7.3 GWh

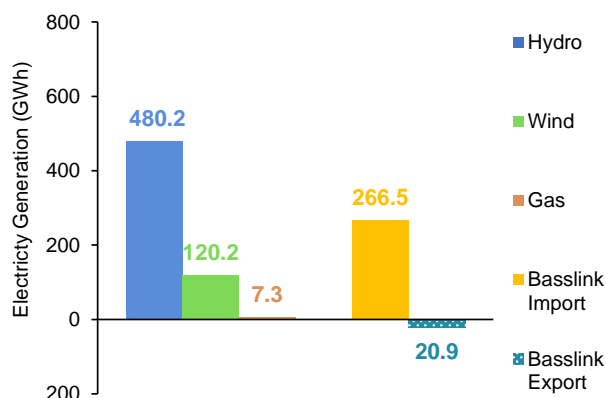
Basslink interconnector

Basslink imports 266.5 GWh

Basslink exports 20.9 GWh

Basslink net imports 245.6 GWh

Energy generation mix and Basslink flows - December 2023



Energy security outlook

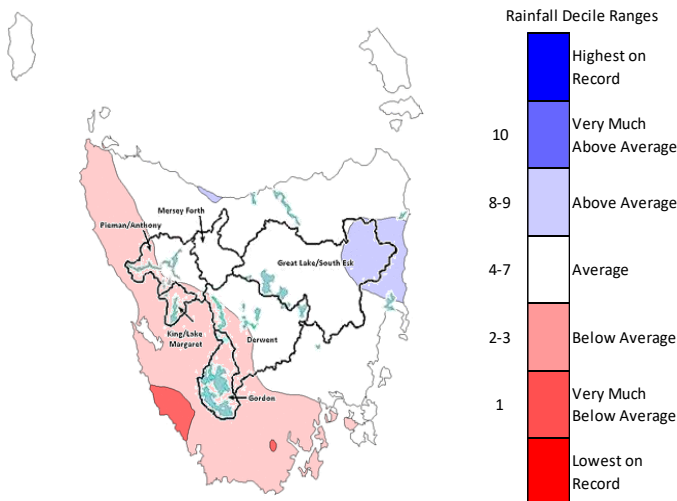
Rainfall in Tasmania - December 2023

Rainfall during December 2023 was average across Hydro Tasmania's Mersey Forth and Great Lake/South Esk catchments and below average across the remaining catchments.

Three month forecast

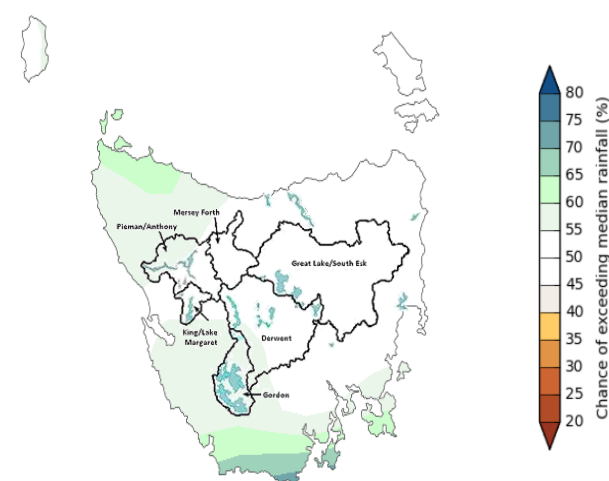
The Bureau of Meteorology's three month climate outlook for January 2024 to March 2024, issued on 28 December 2023, indicates slightly above median rainfall across Hydro Tasmania's catchments in the west and South West, and median rainfall in the remaining catchments.

Monthly rainfall deciles for Tasmania 1 December 2023 - 31 December 2023



Source: Bureau of Meteorology, Monthly Climate Summary for Tasmania.

Likelihood of exceeding the median rainfall January 2024 to March 2024



Source: Bureau of Meteorology, Monthly Climate Outlook.

Disclaimer: This report has been prepared in good faith using information sourced from NEM Review™ and the Australian Bureau of Meteorology, with additional data provided by Hydro Tasmania. The Office of the Tasmanian Economic Regulator assumes no liability as to the reliability and accuracy of the information provided.