



TASMANIAN ENERGY SECURITY

MONITOR AND ASSESSOR

Monthly Dashboard



April 2023 edition

Report on energy in storage levels and energy security assessment for mainland Tasmania as at 3 April 2023.

Status

- Energy in storage is above the Prudent Storage Level.
- Energy in storage is equivalent to 5.4 months average seasonal demand.[^]
- Risk response: Normal - commercial operation of Hydro Tasmania generation.
- Hydro Tasmania reports that storages remain above the High Reliability Level over the next 120 days in all of its simulated inflow sequences.

Water storage situation

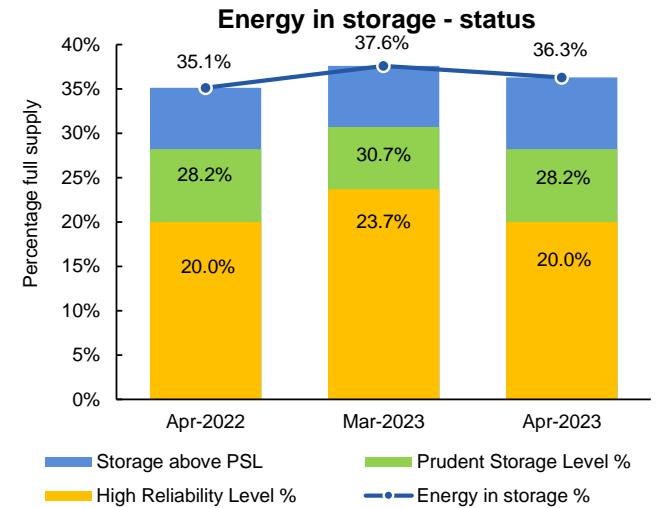
As at 3 April 2023 (GWh)	System	PSL	HRL
Energy in storage (EIS)	5 241	4 071	2 887
Percentage full supply [#]	36.3%	28.2%	20.0%
Total March yield [~] (GWh)	360		

Comparison

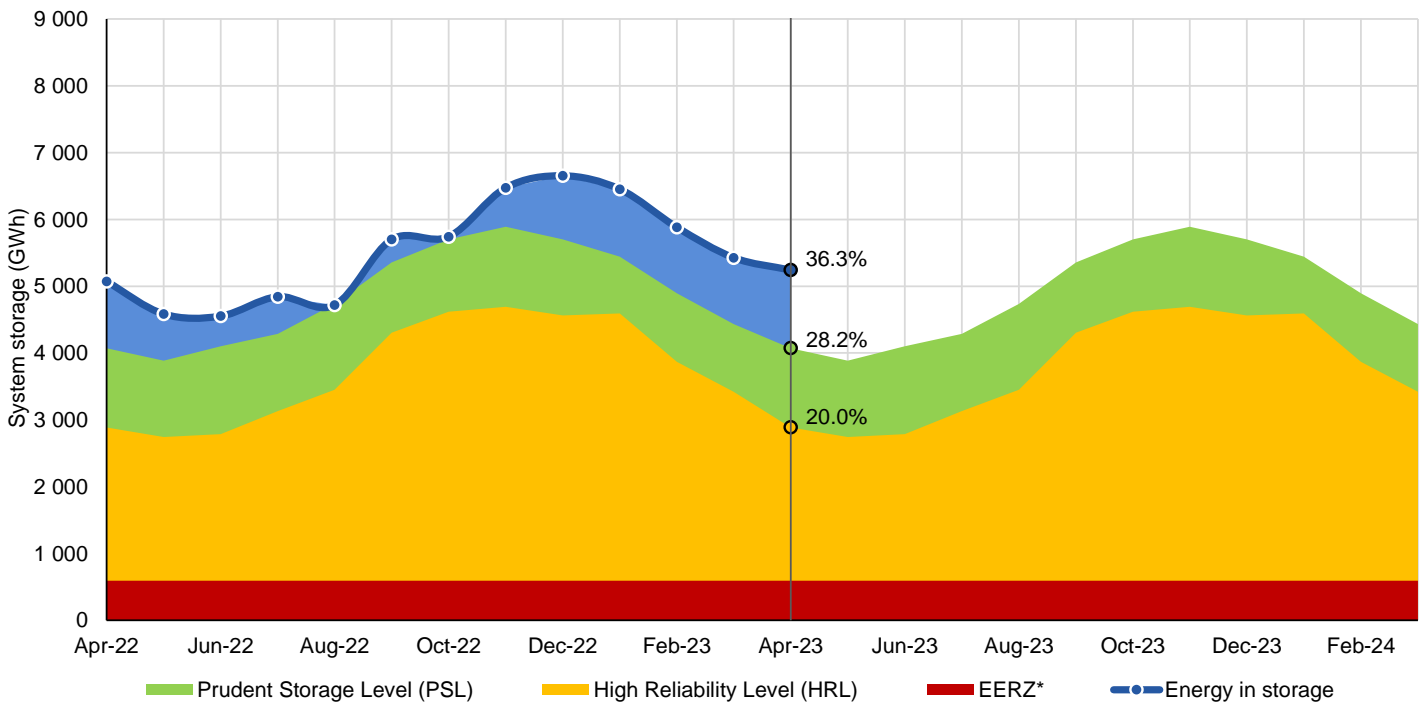
Previous month (as at 6 March 2023) (GWh)	5 427
Change from last month (GWh)	3.4% ↓
Change from April last year (GWh)	3.3% ↑

Energy security assessment

No additional monitoring activities required.



Energy in storage (mainland Tasmania) - April 2022 to April 2023



[^] Average seasonal demand for the energy in storage equivalent is approximately 962 GWh per month.

[#] Total system supply is 14 437 GWh (excludes Lake Gairdner, Lake Margaret and Lake Plimsoll).

[~] Inflows for the calendar month minus losses due to evaporation.

* System storage associated with Great Lake Environmental Extreme Risk Zone (EERZ).

HRL = High Reliability Level (threshold to which reserve water is held for energy security purposes, where the reserve is sufficient to withstand a six month Basslink outage coinciding with a very low inflow sequence, and avoid extreme environmental risk for Great Lake).

PSL = Prudent Storage Level (additional storage to result in a low likelihood of entering the HRL under normal operating conditions).

EIS = Energy in storage (the volume of water available for electricity generation in Hydro Tasmania's dams as a percentage of full supply).

March 2023 generation (mainland Tasmania)

Consumption

Tasmanian monthly consumption 864.9 GWh

Renewable generation

Hydro generation 584.7 GWh

Wind generation 157.5 GWh

Gas generation

Operational

Gas generation 8.0 GWh

Basslink interconnector

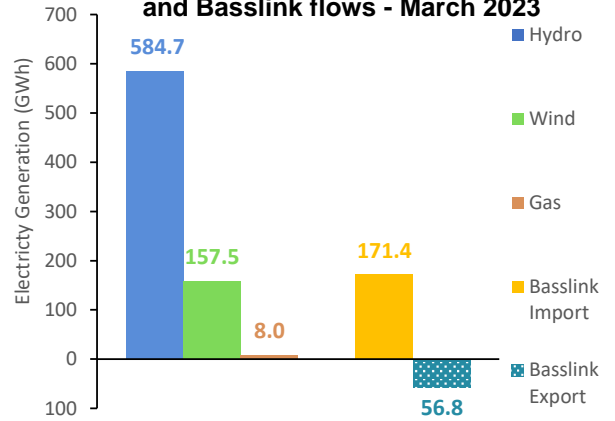
Operational

Basslink imports 171.4 GWh

Basslink exports 56.8 GWh

Basslink net imports 114.6 GWh

Energy generation mix and Basslink flows - March 2023



Energy security outlook

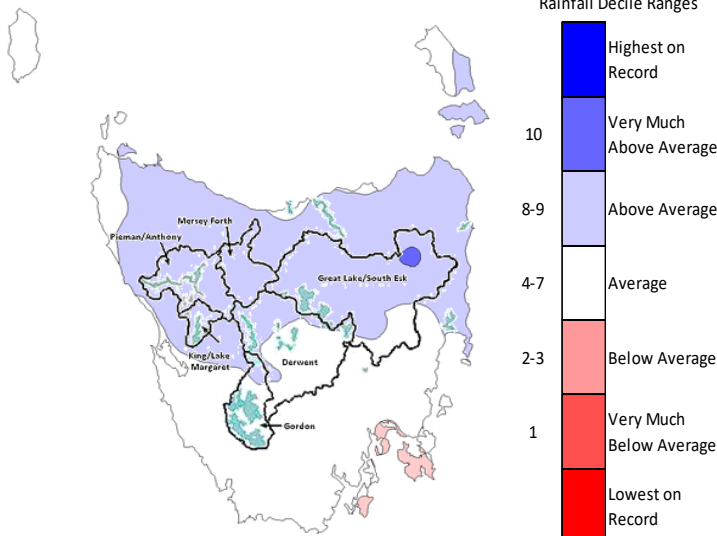
Rainfall in Tasmania - March 2023

Rainfall was above average across most of Hydro Tasmania's catchments during March 2023, although rainfall over the Gordon catchment was average. The mean maximum and minimum temperatures were within 1°C of average for the month.

Three month forecast

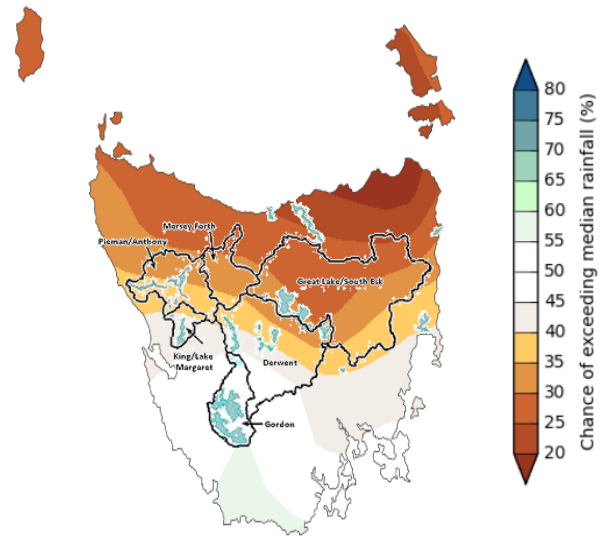
The Bureau of Meteorology's three month climate outlook for April 2023 to June 2023, issued on 30 March 2023, indicates that Hydro Tasmania's catchments are likely to receive below median rainfall.

Monthly rainfall deciles for Tasmania 1 March 2023 - 31 March 2023



Source: Bureau of Meteorology, Monthly Climate Summary for Tasmania.

Likelihood of exceeding the median rainfall April 2023 to June 2023



Source: Bureau of Meteorology, Monthly Climate Outlook.

Disclaimer: This report has been prepared in good faith using information sourced from NEM Review™ and the Australian Bureau of Meteorology, with additional data provided by Hydro Tasmania. The Office of the Tasmanian Economic Regulator assumes no liability as to the reliability and accuracy of the information provided.