



TASMANIAN ENERGY SECURITY

MONITOR AND ASSESSOR

Monthly Dashboard



February 2023 edition

Report on energy in storage levels and energy security assessment for mainland Tasmania as at 6 February 2023.

Status

- Energy in storage is above the Prudent Storage Level.
- Energy in storage is equivalent to 6.4 months average seasonal demand.[^]
- Risk response: Normal - commercial operation of Hydro Tasmania generation.
- Hydro Tasmania reports that storages remain above the High Reliability Level over the next 120 days in all of its simulated inflow sequences.

Water storage situation

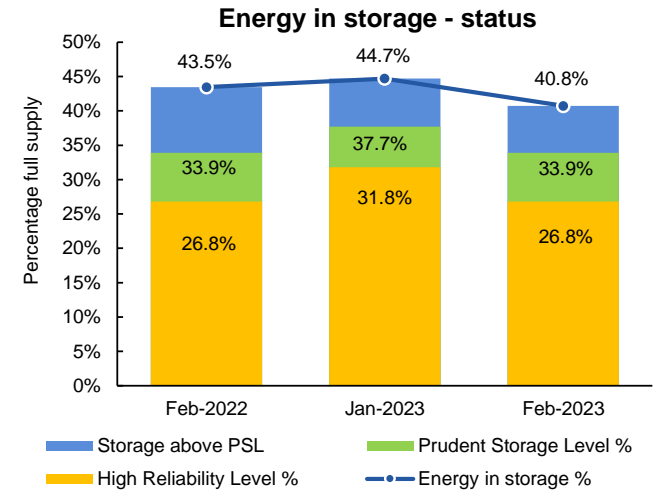
As at 6 February 2023 (GWh)	System	PSL	HRL
Energy in storage (EIS)	5 883	4 894	3 869
Percentage full supply [#]	40.8%	33.9%	26.8%
Total January yield [~] (GWh)	- 31		

Comparison

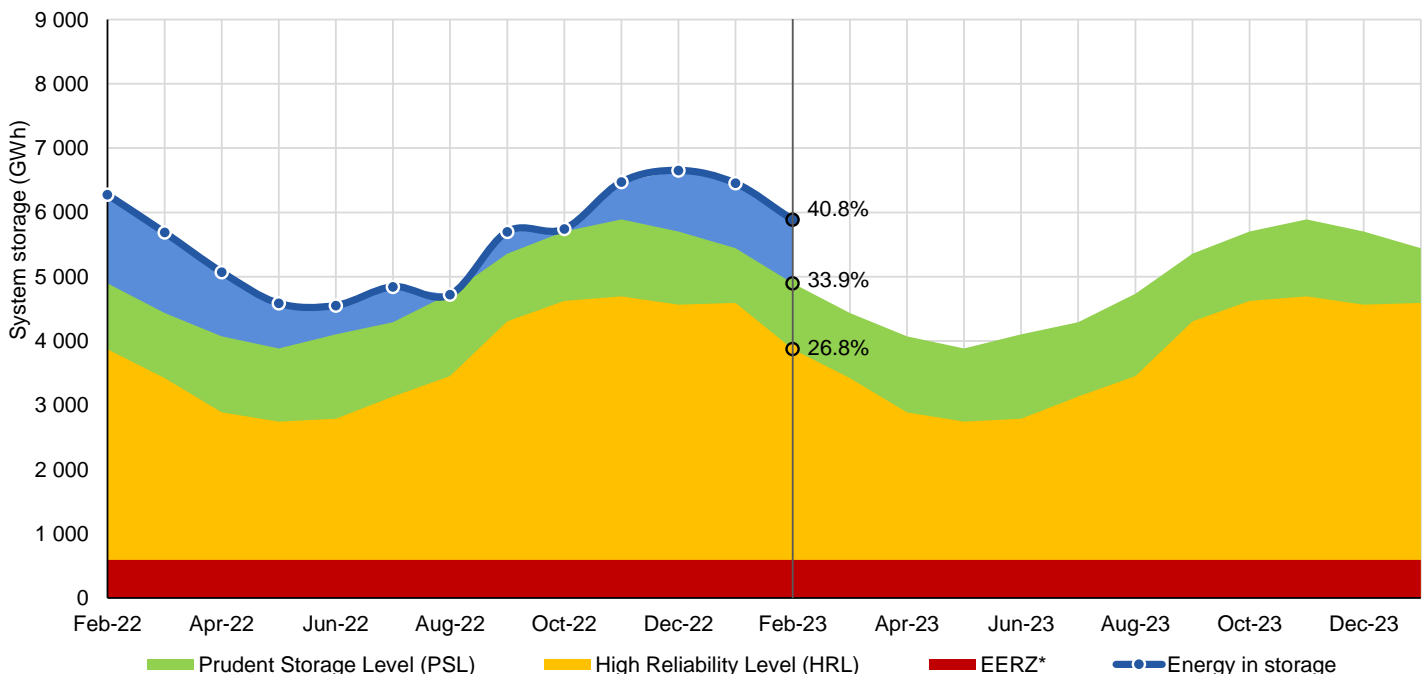
Previous month (as at 2 January 2023) (GWh)	6 453
Change from last month (GWh)	8.8% ↓
Change from February last year (GWh)	6.2% ↓

Energy security assessment

No additional monitoring activities required.



Energy in storage (mainland Tasmania) - February 2022 to February 2023



[^] Average seasonal demand for the energy in storage equivalent is approximately 924 GWh per month.

[#] Total system supply is 14 437 GWh (excludes Lake Gairdner, Lake Margaret and Lake Plimsoll).

[~] Inflows for the calendar month minus losses due to evaporation.

* System storage associated with Great Lake Environmental Extreme Risk Zone (EERZ).

HRL = High Reliability Level (threshold to which reserve water is held for energy security purposes, where the reserve is sufficient to withstand a six month Basslink outage coinciding with a very low inflow sequence, and avoid extreme environmental risk for Great Lake).

PSL = Prudent Storage Level (additional storage to result in a low likelihood of entering the HRL under normal operating conditions).

EIS = Energy in storage (the volume of water available for electricity generation in Hydro Tasmania's dams as a percentage of full supply).

January 2023 generation (mainland Tasmania)

Consumption

Tasmanian monthly consumption 871.5 GWh

Renewable generation

Hydro generation 501.1 GWh

Wind generation 114.0 GWh

Gas generation

Gas generation 6.6 GWh

Operational

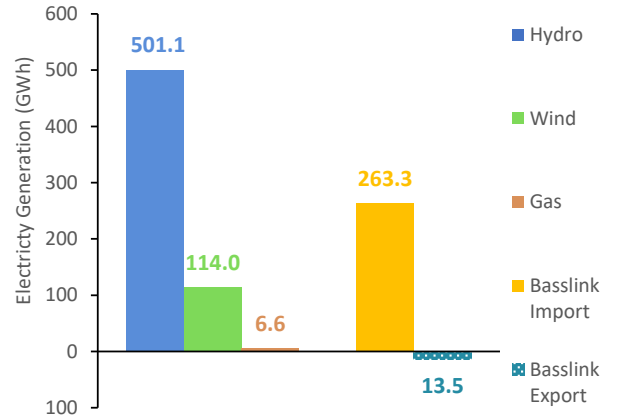
Basslink interconnector

Basslink imports 263.3 GWh

Basslink exports 13.5 GWh

Basslink net imports 249.8 GWh

Energy generation mix and Basslink flows - January 2023



Energy security outlook

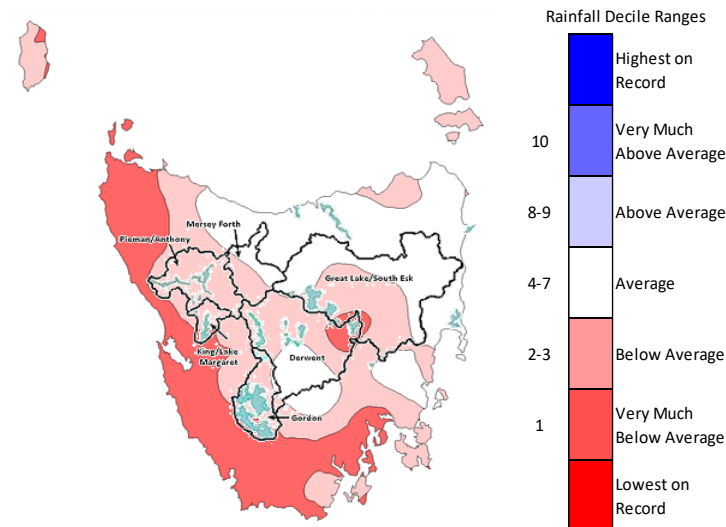
Rainfall in Tasmania - January 2023

Rainfall was below average across most of Hydro Tasmania's catchments during January 2023. Overall, rainfall for the month was 46.8 per cent below average for Tasmania and the mean maximum temperature was 2.18°C above average, making it the ninth warmest January on record.

Three month forecast

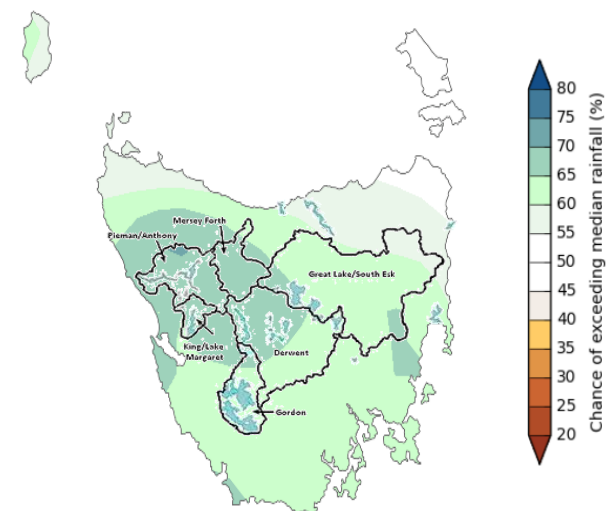
The Bureau of Meteorology's three month climate outlook for February 2023 to April 2023, issued on 2 February 2023, estimates an above average chance that rainfall in each of Hydro Tasmania's catchments will exceed the median. Based on this forecast, each of Hydro Tasmania's catchments are likely to receive above average inflows.

Monthly rainfall deciles for Tasmania 1 January 2023 - 31 January 2023



Source: Bureau of Meteorology, Monthly Climate Summary for Tasmania.

Likelihood of exceeding the median rainfall February 2023 to April 2023



Source: Bureau of Meteorology, Monthly Climate Outlook.

Disclaimer: This report has been prepared in good faith using information sourced from NEM Review™ and the Australian Bureau of Meteorology, with additional data provided by Hydro Tasmania. The Office of the Tasmanian Economic Regulator assumes no liability as to the reliability and accuracy of the information provided.