



TASMANIAN ENERGY SECURITY MONITOR AND ASSESSOR Monthly Dashboard



June 2023 edition

Report on energy in storage levels and energy security assessment for mainland Tasmania as at 5 June 2023.

Status

- Energy in storage is above the Prudent Storage Level.
- Energy in storage is equivalent to 5.4 months average seasonal demand.[^]
- Risk response: Normal - commercial operation of Hydro Tasmania generation.
- Hydro Tasmania reports that storages remain above the High Reliability Level over the next 120 days in all of its simulated inflow sequences.

Water storage situation

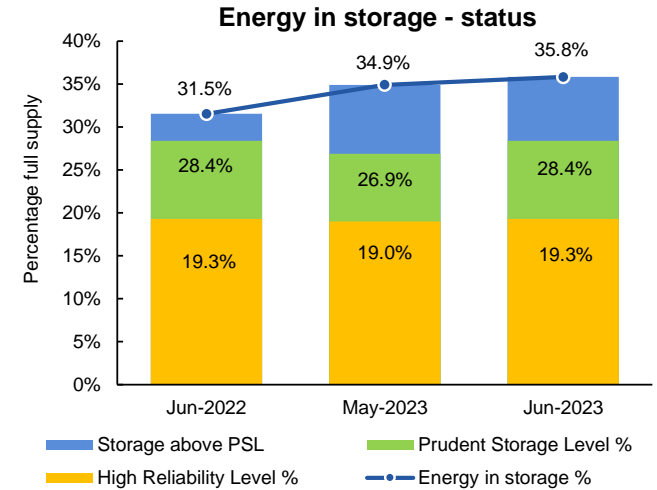
As at 5 June 2023 (GWh)	System	PSL	HRL
Energy in storage (EIS)	5 174	4 100	2 786
Percentage full supply [#]	35.8%	28.4%	19.3%
Total May yield [~] (GWh)	868		

Comparison

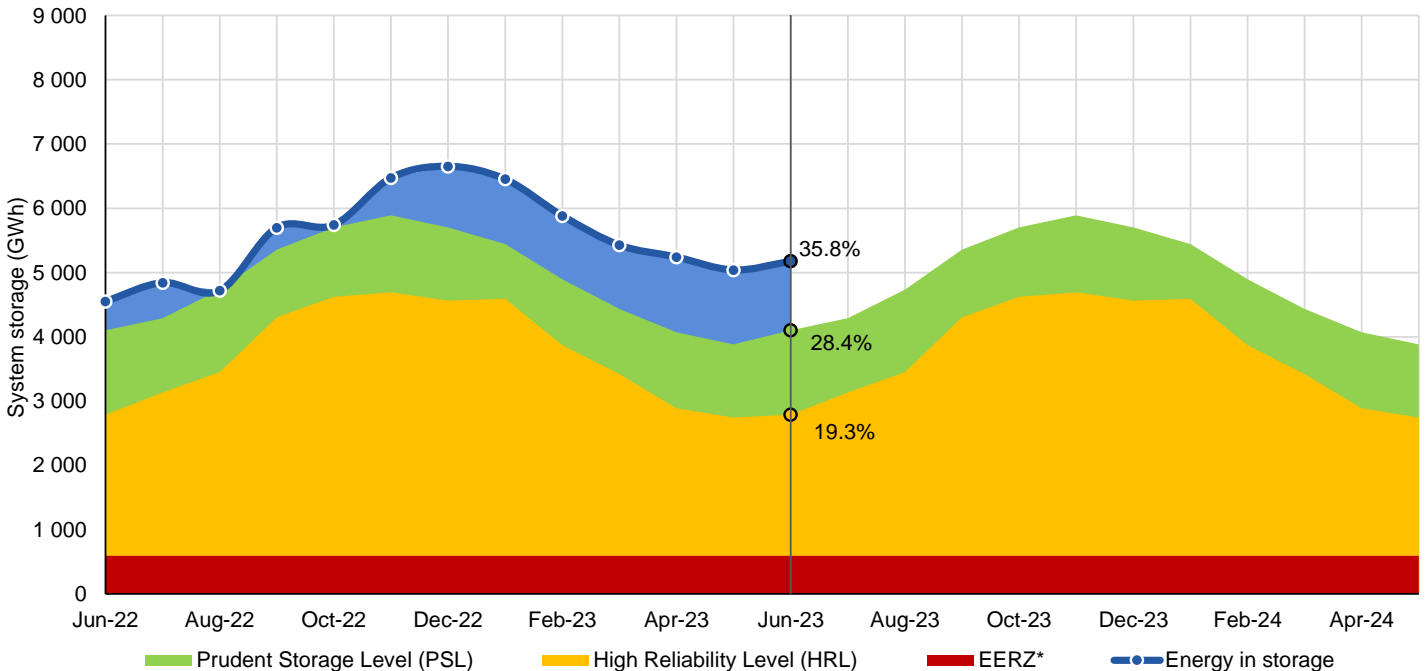
Previous month (as at 1 May 2023) (GWh)	5 041
Change from last month (GWh)	2.6% ↑
Change from June last year (GWh)	13.7% ↑

Energy security assessment

No additional monitoring activities required.



Energy in storage (mainland Tasmania) - June 2022 to June 2023



[^] Average seasonal demand for the energy in storage equivalent is approximately 957 GWh per month.

[#] Total system supply is 14 437 GWh (excludes Lake Gairdner, Lake Margaret and Lake Plimsoll).

[~] Inflows for the calendar month minus losses due to evaporation.

* System storage associated with Great Lake Environmental Extreme Risk Zone (EERZ).

HRL = High Reliability Level (threshold to which reserve water is held for energy security purposes, where the reserve is sufficient to withstand a six month Basslink outage coinciding with a very low inflow sequence, and avoid extreme environmental risk for Great Lake).

PSL = Prudent Storage Level (additional storage to result in a low likelihood of entering the HRL under normal operating conditions).

EIS = Energy in storage (the volume of water available for electricity generation in Hydro Tasmania's dams as a percentage of full supply).

May 2023 generation (mainland Tasmania)

Consumption

Tasmanian monthly consumption 995.6 GWh

Renewable generation

Hydro generation 867.4 GWh

Wind generation 192.6 GWh

Gas generation

Gas generation 6.1 GWh

Operational

Basslink interconnector

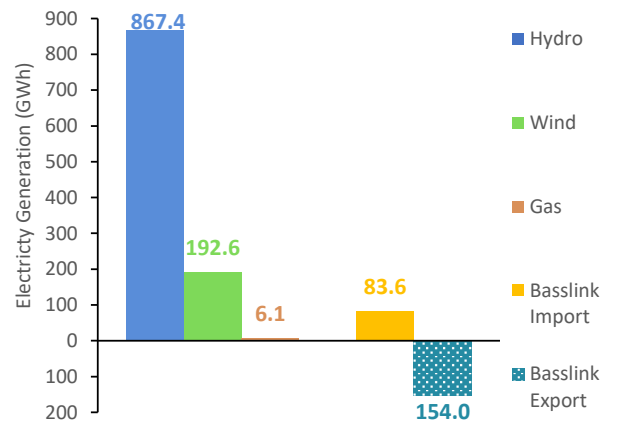
Operational

Basslink imports 83.6 GWh

Basslink exports 154.0 GWh

Basslink net exports 70.4 GWh

Energy generation mix and Basslink flows - May 2023



Energy security outlook

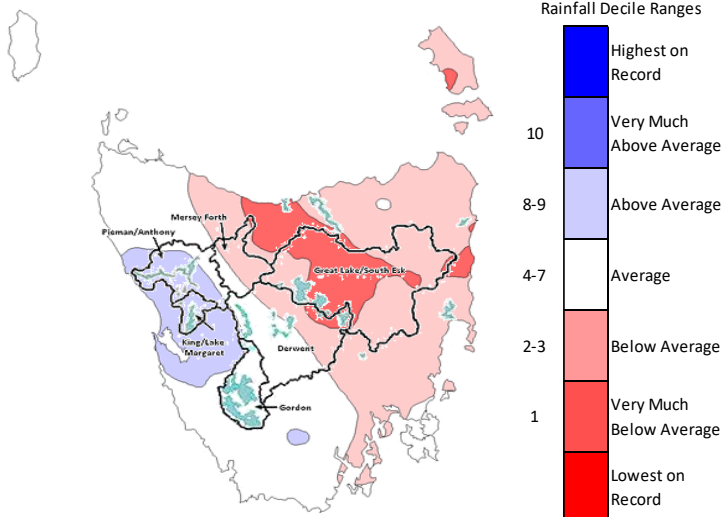
Rainfall in Tasmania - May 2023

Rainfall during May 2023 was above average in Hydro Tasmania's Pieman/Anthony and King/Lake Margaret catchments, average in its Gordon catchment, and below average in its remaining catchments. Total rainfall across Tasmania was 17 per cent below average.

Three month forecast

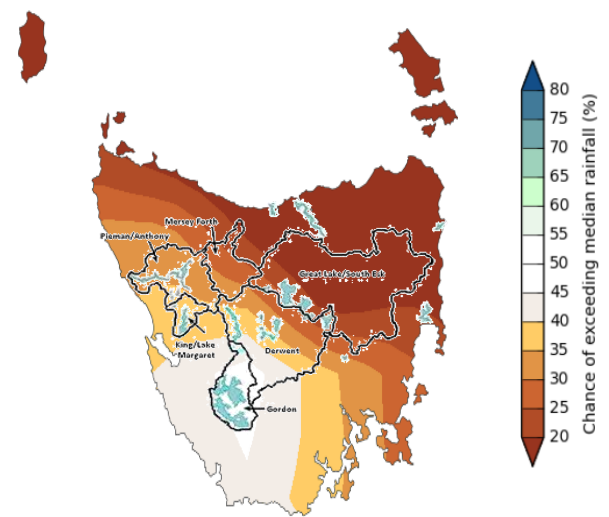
The Bureau of Meteorology's three month climate outlook for June 2023 to August 2023, issued on 1 June 2023, indicates that Hydro Tasmania's catchments are likely to receive below median rainfall, with the exception of the Gordon catchment, which has an equal likelihood of receiving above or below median rainfall.

Monthly rainfall deciles for Tasmania 1 May 2023 - 31 May 2023



Source: Bureau of Meteorology, Monthly Climate Summary for Tasmania.

Likelihood of exceeding the median rainfall June 2023 to August 2023



Source: Bureau of Meteorology, Monthly Climate Outlook.

Disclaimer: This report has been prepared in good faith using information sourced from NEM Review™ and the Australian Bureau of Meteorology, with additional data provided by Hydro Tasmania. The Office of the Tasmanian Economic Regulator assumes no liability as to the reliability and accuracy of the information provided.